


# BMJ Open SARS-CoV-2 chronological genomic evolution and epidemiology in the Middle East and North Africa (MENA) region as affected by vaccination, conflict and socioeconomical disparities: a population-based cohort study

Dalia Obeid,<sup>1,2</sup> Rawan Alnemari,<sup>1</sup> Ahmed A. Al-Qahtani,<sup>2,3</sup> Madain Alsanea,<sup>2</sup> Basma Alahideb,<sup>2</sup> Feda Alsuwairi,<sup>2</sup> Maha Abdulkarim,<sup>2</sup> Fatimah S. Alhamlan <sup>2,3</sup>

**To cite:** Obeid D, Alnemari R, Al-Qahtani AA, *et al.* SARS-CoV-2 chronological genomic evolution and epidemiology in the Middle East and North Africa (MENA) region as affected by vaccination, conflict and socioeconomical disparities: a population-based cohort study. *BMJ Open* 2022;**12**:e060775. doi:10.1136/bmjopen-2022-060775

► Prepublication history and additional supplemental material for this paper are available online. To view these files, please visit the journal online (<http://dx.doi.org/10.1136/bmjopen-2022-060775>).

Received 05 January 2022  
Accepted 19 May 2022



© Author(s) (or their employer(s)) 2022. Re-use permitted under CC BY-NC. No commercial re-use. See rights and permissions. Published by BMJ.

<sup>1</sup>Genome of Infectious Diseases Department, Public Health Authority, Riyadh, Saudi Arabia

<sup>2</sup>Department of Infection and Immunity, King Faisal Specialist Hospital and Research Centre, Riyadh, Saudi Arabia

<sup>3</sup>College of Medicine, Alfaisal University, Riyadh, Saudi Arabia

## Correspondence to

Dr Fatimah S. Alhamlan;  
falhamlan@kfshrc.edu.sa

## ABSTRACT

**Objective** To describe the chronological genomic evolution of SARS-CoV-2 and its impact on public health in the Middle East and North Africa (MENA) region.

**Methods** This study analysed all available SARS-CoV-2 genomic sequences, metadata and rates of COVID-19 infection from the MENA region retrieved from the Global Initiative on Sharing All Influenza Data database from January 2020 to August 2021. Inferential and descriptive statistics were conducted to describe the epidemiology of SARS-CoV-2.

**Results** Genomic surveillance of SARS-CoV-2 in the MENA region indicated that the variants in January 2020 predominately belonged to the G, GR, GH or O clades and that the most common variant of concern was Alpha. By August 2021, however, the GK clade dominated (57.4% of all sequenced genomes), followed by the G clade (18.7%) and the GR clade (11.6%). In August, the most commonly sequenced variants of concern were Delta in the Middle East region (91%); Alpha (44.3%) followed by Delta (29.7%) and Beta (25.3%) in the North Africa region; and Alpha (88.9%), followed by Delta (10%) in the fragile and conflict-affected regions of MENA. The mean proportion of the variants of concern among the total sequenced samples differed significantly by country ( $F=1.93$ ,  $P=0.0112$ ) but not by major MENA region ( $F=0.14$ ,  $P=0.27$ ) or by vaccination coverage ( $F=1.84$ ,  $P=0.176$ ).

**Conclusion** This analysis of the genomic surveillance of SARS-CoV-2 provides an essential description the virus evolution and its impact on public health safety in the MENA region. As of August 2021, the Delta variant showed a genomic advantage in the MENA region. The MENA region includes several fragile and conflict-affected countries with extremely low levels of vaccination coverage and little genomic surveillance, which may soon exacerbate the existing health crisis within those countries and globally.

## INTRODUCTION

The most catastrophic pandemic of the modern world in terms of numbers of lives lost and health system, economic and social challenges began late in 2019.<sup>1</sup> Since then,

## STRENGTHS AND LIMITATIONS OF THIS STUDY

- ⇒ The study included 69 571 metadata sequences collected from many countries in the Middle East and North Africa (MENA) region.
- ⇒ To our knowledge, this study is the first to assess conflict-affected regions, providing a rare look into how the pandemic progressed in such regions relative to non-conflict-affected regions.
- ⇒ The study analysed the SARS-CoV-2 genome along with vaccination data, public health restrictions and economic burnout in the MENA region.
- ⇒ Some low-income or conflict-affected countries reported no or low numbers of samples; therefore, their genomic analysis is under-represented in this study, which may bias the results.

approximately 249 million people have been infected with SARS-CoV-2, and more than 5 million deaths caused by the resulting COVID-19 have been reported worldwide.<sup>2</sup> As of 31 August 2021, the Middle East and North Africa (MENA) region reported 19 million infections and approximately 289 000 deaths.<sup>3</sup> The economic, political and ideological diversity of the MENA region have led to differences in the ability of the countries to respond to the pandemic and in the preparedness of each country's healthcare system.<sup>4 5</sup> The Gulf countries demonstrated strict management strategies, implementing social distancing, increasing the health system capacity and expanding COVID-19 infection testing and vaccination.<sup>6</sup> Other countries considered fragile or conflict-affected, including Yemen, Syria, Lebanon, Iraq, Palestine, Libya and Somalia, have experienced widespread outbreaks, high incidence and high mortality rates while reporting low

numbers of detected cases owing to a lack of reliable information and underprepared healthcare systems and health management.<sup>7–9</sup> The diversity in implementing restrictions, such as full or partial lockdowns, travel suspension, and school and workplace closure, in the MENA region is reflected by the total numbers of infections in each country.<sup>4</sup>

The ability of the SARS-CoV-2 virus to continually evolve at the genomic level may enable increased transmissibility, escape from diagnostic assay detection or immunity, and decreased susceptibility to therapeutics.<sup>10</sup> Thus, genomic surveillance plays a key role in public health epidemiology, surveillance and outbreak control.<sup>11</sup> Public health officials have shown great interest in routine genetic sequencing to track both the emergence and impact of the SARS-CoV-2 variants.<sup>12</sup> The WHO has taken the lead during the pandemic on monitoring and assessing the virus variants and has categorised them according to their anticipated global impact as variants of concern (VOCs) or variants of interest (VOIs).<sup>13</sup> By July 2021, WHO had designated four VOCs, Alpha, Beta, Gamma, and Delta, and seven VOIs, and the continued emergence of new variants was expected.<sup>10</sup> These VOCs showed increased transmissibility and increased virulence or caused a change in clinical presentation, or there has been a decrease in the effectiveness of public health measures, such as vaccination, pharmaceutical treatment or social distancing.<sup>14</sup> The countries in the MENA region are conducting genomic surveillance as a means of contributing to the global effort to control the pandemic and to inform decisions about when to take steps toward lifting pandemic-directed restrictions.

This analysis summarises the genomic surveillance of SARS-CoV-2 in the MENA region from January 2020 to August 2021, assessing the association of the evolution and circulation of the virus with public health actions and safety.

## METHODS

### Data collection strategy

The reporting of this study follows the Strengthening the Reporting of Observational Studies in Epidemiology reporting guideline. A standard search was conducted of the Global Initiative on Sharing All Influenza Data (GISAID) database to retrieve all available sequences from the MENA region.<sup>15</sup> The metadata were accessed between May and August 2021, with August 31 as the cut-off date for submission. The metadata extracted from the portal included the sample collection date, defined clade and VOCs or VOIs detected. Clades were assigned using the GISAID nomenclature, which categorises clades as L, S, V, G, GK, GH, GV, GRY and O (for unclassified genome).<sup>16</sup> The VOCs were classified using the WHO assignment of Alpha (B.1.1.7), Beta (B.1.351), Gamma (P.1), and Delta (B.1.617.2), and the VOIs were classified as Epsilon, Zeta, Eta, Theta, Iota, Kappa and Lambda.<sup>17</sup> In the search box, a country and a month timeframe were selected, and the

results were collected as an entry in the primary dataset. Metadata for 69 571 genomic sequences were retrieved from the GISAID database.

### Inclusion and exclusion criteria

The search criteria for the countries in the MENA regions encompassed Algeria, Bahrain, Djibouti, Egypt, Iran, Iraq, Jordan, Kuwait, Lebanon, Libya, Morocco, Oman, Palestine, Qatar, Saudi Arabia, Sudan, South Sudan, Somalia, Syria, Tunisia, UAE, Turkey and Yemen. Genomic data were excluded from the analysis if the collection date was not completed, or the data quality was insufficient to define the clade or VOC/VOI. The main sampling bias in our study was the distribution of sequences retrieved from different countries. Countries with no sequences available in the GISAID portal, namely, Yemen and Sudan, were excluded. The exclusion criteria also included viruses isolated from organisms other than humans. The final sample size for analysis after application of the exclusion criteria was 67 393. The total numbers of sequences per country were as follows: Algeria, 46; Bahrain, 710; Djibouti, 139; Egypt, 928; Iran, 479; Iraq, 245; Jordan, 688; Kuwait, 200; Lebanon, 1019; Libya, 22; Morocco, 35; Oman, 461; Palestine, 150; Qatar, 2910; Saudi Arabia, 1096; South Sudan, 87; Somalia, 24; Tunisia, 132; UAE, 1849 and Turkey, 56 173.

### Collection of disease epidemiology, vaccination, testing capacity and lockdown data

Disease epidemiologic data, including the total number of confirmed COVID-19 infection cases and the total number of deaths, were obtained from the Johns Hopkins University coronavirus dashboard (<https://github.com/CSSEGISandData/COVID-19>) accessed on 31 August 2021.<sup>18</sup> Lockdown data for the MENA region countries were primarily collected from two meta-analyses, with data from Turkey and Djibouti obtained from the Overseas Security Advisory Council and US Embassy websites.<sup>19–22</sup> For vaccination data, we collected the information from the live COVID-19 vaccination portal and modelled with the COVID-19 Vax model.<sup>23 24</sup> The lockdown metadata for the MENA region countries are shown in online supplemental appendix S1. The daily COVID-19 test results per thousand people were collected from the 'Our World in Data' website.<sup>25</sup> The MENA countries were divided into three main groups: (1) fragile or undergoing conflict, which included Syria, Lebanon, Yemen, Iraq, Palestine, Libya and Somalia; (2) the North African region, which included all MENA countries located in Africa (Algeria, Tunisia, Morocco, Egypt, Sudan, South Sudan and Djibouti) and (3) the Middle East region, which included Saudi Arabia, Qatar, UAE, Oman, Bahrain, Iran, Iraq, Jordan, Kuwait and Turkey.

### Statistical analysis

All data collected were stored and analysed using SAS (V.9.4) software and GraphPad Prisma (V.9.0). Inferential and descriptive statistics were conducted to assess

epidemiologic characteristics of SARS-CoV-2 in the MENA region. The  $\chi^2$  test was used for categorical variables when appropriate. Univariable and multivariate analyses were conducted to identify factors associated with the mean of the proportion of the VOCs that composed the total genomes sequenced. All reported p values are two tailed and were considered to be statistically significant at  $p < 0.05$ .

### Viral phylogenetic and phylogeographical analyses

Only regions with high-vaccination coverage and complete sequences were selected for these analyses. From each country, we used the earliest samples of good quality, with a maximum number of 20 samples per country. The sample metadata and acknowledgments are included in online supplemental appendix S2. The total number of samples retrieved was 331; however, after alignment, only 257 samples were included in the phylogenetic analysis. For the phylogenetic analysis, we used a Bayesian Evolutionary Analysis Sampling Tree (BEAST V.2.6.6).<sup>26</sup> The analysis was conducted with activated tip dates, the Jukes and Cantor 1969 model (JC69) and a strict clock model. The phylogenetic tree was visualised using the interactive Tree of Life online tool.<sup>27</sup> For the phylogeographical analysis, we used Nextstrain V.3.2.2 and the Augur pipeline.<sup>28</sup>

## RESULTS

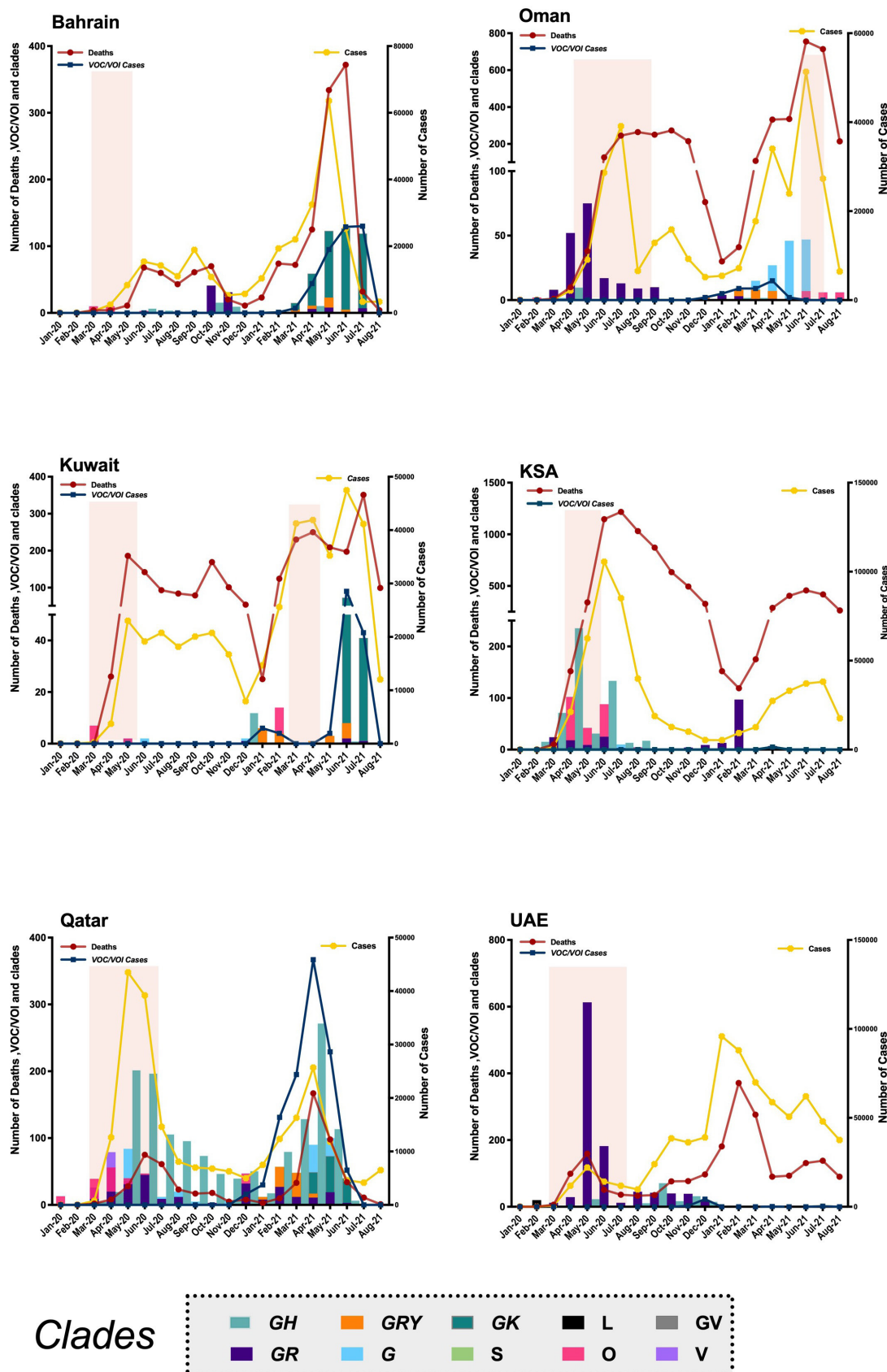
### Distribution of SARS-CoV-2 clades and VOCs in the MENA region by date

Figure 1 shows the distribution of reported COVID-19 infections in the Gulf area of the MENA region, namely, Bahrain, Oman, Kuwait, Saudi Arabia, Qatar and the UAE. In Bahrain, the first cases of COVID-19 infection were detected in February 2020, and the first sequenced cases belonged to the GR and O clades. In October 2020, the cases were primarily infections by variants belonging to the GR clade. The first appearance of a VOI or VOC was in March 2021, and it was the Alpha (B.1.1.7) variant. The predominance of this variant was replaced in April by the Delta (B.1.617.2) variant. The highest numbers of recorded COVID-19 cases and deaths were reported in May 2021, with the Delta variant being the predominant VOI. In Oman, the first cases were detected in March 2020. The most common clade in 2020 was the GR clade, but in 2021, the G clade was most common. The first appearance of a VOI or VOC was in January 2021, again it was the Alpha variant. The highest numbers of COVID-19 infections and deaths were reported in June 2021. During that time, the most common clade was G, and no VOIs or VOCs were detected. The first cases reported in Kuwait were in March 2020, and the first sequenced variants were from the O clade. The first appearance of a VOI or VOC was in January 2021, and once again, it was the Alpha variant. However, from April through November 2021, the main VOC or VOI was Delta. The highest numbers of COVID-19 cases and deaths were reported in June 2021, and the most common VOI was Delta. In Saudi Arabia,

the first cases were detected in February 2020, and they belonged to the GH clade. The first appearances of VOIs or VOCs were in April 2021, and they were the Alpha and (B.1.351) Beta variants. The highest numbers of cases and deaths were reported in June 2020, and the dominant clades were O and GR. In Qatar, the first cases were reported in February 2020, and the first sequenced variants belonged to the O, GR and V clades. From May 2020 to December, the variants belonged primarily to the G clade. The first appearances of VOIs or VOCs were detected in December 2020, and they were the Alpha and Beta variants. The highest numbers of deaths were reported in April 2021, and the dominant VOI was Beta. The first COVID-19 cases detected in the UAE were in February 2020. The most common clade was the GR clade. The first appearance of a VOI or VOC was in November 2020, which is the earliest in the MENA region, and this earliest detected variant was Alpha. The highest numbers of COVID-19-related deaths and infections were reported in April 2021, and the dominant VOI was Beta. Most of the lockdowns among the Gulf area countries started between May and June 2020. However, Oman and Kuwait also conducted lockdowns in 2021, attempting to slow increases in the number of infections.

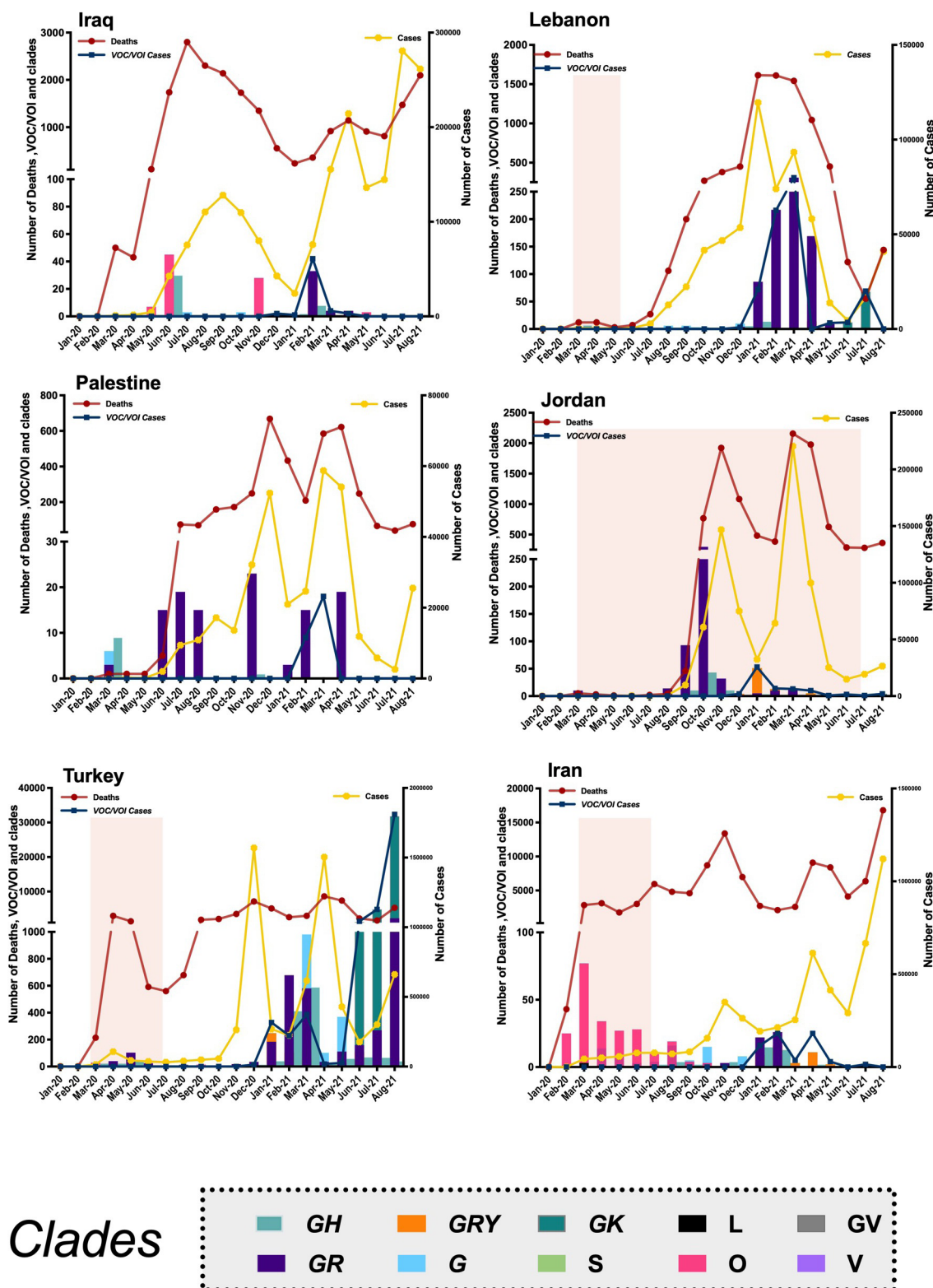
Figure 2 illustrates the distribution of reported COVID-19 infections in the remaining Middle East countries, namely, Iraq, Lebanon, Palestine, Jordan, Turkey and Iran. In Iraq, COVID-19 infection cases were first detected in February 2020, and the first sequenced variants belonged to the O and GH clades. The first VOC appeared a year later, in February 2021, and the dominant variant was Alpha. The number of infections and deaths continued to rise at that time, with the Alpha variant dominating, and the variants belonged to the GR clade. In Lebanon, the first cases were detected in February 2020, and the clade most common until April 2021 was GR. The VOIs or VOCs first appeared in January 2021, and the earliest variant was Alpha. The peak numbers of deaths was in March 2021, and most people were infected with either the Alpha or Delta variants. In Palestine, the first COVID-19 cases were seen in March 2020. The dominant clade for the sequenced variants in 2020 was GR. The first appearance of the VOIs or VOCs was reported in February 2021, and the earliest variant was Alpha. Peak numbers of infections and deaths were in March 2021, and the dominant variant was Alpha. In Jordan, the first cases were detected in March 2020, and the most common clade for the sequenced variants was GR. VOIs or VOCs appeared in December 2020, and the earliest variant was Alpha. The peak numbers of infections and deaths were reported in March 2021, and Alpha was the dominant variant. In Turkey, the first infections were detected in March 2020. The first sequenced cases belonged to the GR clade although both the GR and GH clades dominated in 2020. The first appearance of VOIs or VOCs was reported in December 2020. The earliest variant was Alpha and it was the common VOI or VOCs from December 2020 to May 2021, when it was replaced by the Delta variant. Peak





**Figure 1** Timeline for the distribution for the detected clades, variants of interest (VOIs) and numbers of COVID-19 infections and related deaths from the first detected SARS-CoV-2 infection until August 2021 in the Gulf area by country. The left y-axis depicts the numbers of clades (represented in the plot by bars), monthly deaths (represented by the red line), and infections by variants of concern (VOC; represented by the blue line). The right y-axis depicts the numbers of infections each month (yellow line). Light-red shaded vertical rectangles represent the reported lockdown periods.





**Figure 2** Timeline for the distribution for the detected clades, variants of interest (VOIs) and numbers of COVID-19 infections and related deaths from the first detected SARS-CoV-2 infection until August 2021 in the Levant area, Turkey and Iran. The left y-axis depicts the numbers of clades (represented in the plot by bars), monthly deaths (represented by the red line), and infections by variants of concern (VOCs; represented by the blue line). The right y-axis depicts the numbers of infections each month (yellow line). Light-red shaded vertical rectangles represent the reported lockdown periods.

numbers of infections and deaths were reported in April 2021, and the dominant variant was Alpha. In Iran, the first infections were detected in February 2020. The most

common clade of the variants sequenced in 2020 was O. The first appearance of a VOI or VOC was detected in January 2021, and the earliest reported variant was Alpha.

The peak numbers of infections and deaths were reported in April 2021, and the dominant variant was Delta. Most lockdowns for these countries started between May and June 2020, except for Jordan, which started a lockdown in 2020.

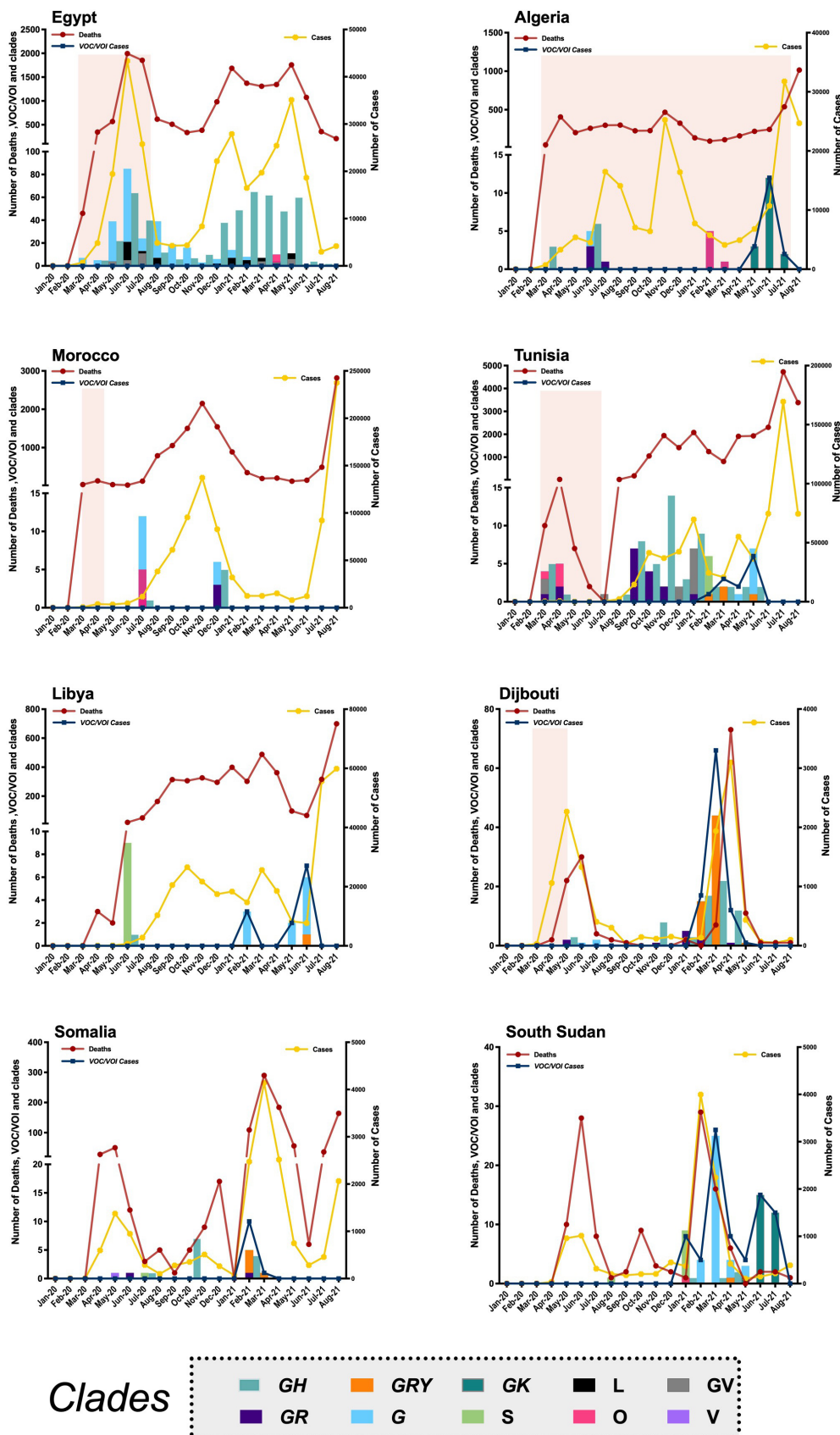
Figure 3 shows the distribution of SARS-CoV-2 in the African Countries of the MENA region: Egypt, Algeria, Libya, Djibouti, Tunisia, Morocco, South Sudan and Somalia. For most of these countries, fewer than 100 sequences a month were determined. In Egypt, the first COVID-19 infections were reported in March 2020, and the first sequenced cases belonged to the G clade, with most sequences in 2020 belonging to the GR and GH clades. VOIs and VOCs were not reported in Egypt. The highest numbers of infections and deaths were observed in June 2021, when the dominant clade was GH. In Algeria, the first infections were detected in March 2020, and they belonged to the GH clade. The first appearance of a VOI or VOC was in January 2020, and the earliest variant observed was Delta. Peak numbers of deaths were reported in June 2021, when Delta remained the dominant VOI. In Morocco, the first cases were detected in February 2020, whereas genomic surveillance was first used in July 2020. Many of the sequenced variants belonged to the G and O clades. VOIs or VOCs were not detected in Morocco. In Tunisia, the first infections were detected in March 2020, with many of the sequenced variants belonging to the GH and O clades. VOIs and VOCs first appeared in February 2021, and the earliest was the Alpha variant. Most variants detected among infected persons and persons who died in Tunisia belonged to the GH clade. The most common VOIs or VOCs were Alpha and Beta. In Libya, the first infections were detected in July 2020 and the first sequenced variants belonged to the S clade. The first appearance of the VOIs or VOCs was in February 2020, and the earliest detected was the Alpha variant. The peak number of cases and deaths were reported in June 2021, when the dominant VOI or VOC was Alpha. In Djibouti, the first infections were reported in April 2020, with the first sequenced cases belonging to the GR and GH clades. The first appearance of the VOIs or VOCs was in February 2021, and the earliest detected was the Alpha variant. The peak numbers of infections and deaths were reported in April 2021, and the dominant VOIs were Alpha and Delta. In Somalia, the first infections were detected in March 2020, and the first sequenced variants were from the V clade. The first appearance of a VOI or VOC was in February 2021, and the earliest detected variant was Alpha. Peak numbers of infections and deaths were in March 2021, and the dominant VOI was Alpha. In South Sudan, the first infections were detected in May 2020; the variants were first sequenced in August 2020 and belonged to the S clade. VOIs or VOCs first appeared in January 2021, and the earliest was the Beta variant. Peak numbers of infections and deaths were in February and March 2021, and the dominant VOI was Delta. Lockdowns in the African region for many countries occurred during the summer

of 2020, including Algeria, which also instituted additional measures owing to increased infections and delays in vaccine uptake.

### SARS-CoV-2 genomic surveillance in the MENA region

For the fragile and conflict-affected countries in the MENA region, figure 4A.1, shows the distribution of clades over time, with the mean percentage of the total VOCs among the total sequenced samples. In 2020, the most common clades were GR and GH. The VOCs and VOIs were first detected in December 2020 and continued to rise to be approximately 90% of the total sequenced genomes in March 2021; most of the infections were caused by the Alpha variant. The overall distribution of VOCs by percentage in the region is shown in figure 4A.2. In these countries, Alpha was the most dominant VOC (~88.9%), followed by Delta (~10%). For the Middle East region, figure 4B.1, shows the distribution of clades over time, giving the mean percentage of VOCs among the total sequenced samples. In 2020, the most common clades were GR and GH. Infections by VOCs and VOIs were first reported in November 2020 and continued to rise to peak at approximately 65% of the total sequenced samples in July 2021, with Delta being the most common VOC. The overall distribution of VOCs by percentage in the region is shown in figure 4B.2. In this region, Delta was the dominant VOC (~91%), followed by Alpha (~5.9%). For the North Africa region, figure 4C.1 shows the distribution of clades over time with the mean percentage of the total VOCs among the total sequenced samples. In 2020, the most common clades were G and GH. VOCs and VOIs first appeared in December 2020 and continued to rise to be approximately 65% of the total samples in May 2021, with the Delta and Alpha variants being the most commonly detected. The overall distribution of VOCs by percentage in the region is shown in figure 4C.2. In this region, the most dominant VOC was Delta (~42.5%), followed by Alpha (~36. %) and Beta (~20.7%).

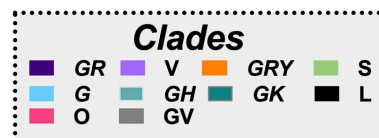
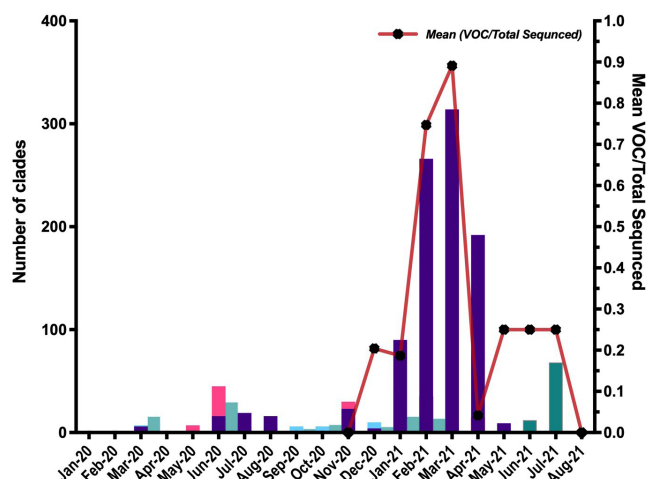
The distribution of the VOCs and non-VOCs by date in the major MENA regions is shown in table 1. The association of the presence of VOC (vs non-VOCs) with region was statistically significant ( $X^2=13\,874$ ,  $p<0.0001$ ). The results of the analyses indicated that from November through August, the distribution of cases by VOC status differed for the three major regions. In the Middle East, infections by VOCs were increasing, while their numbers did not increase to the same levels in North Africa and the fragile or conflict-affected countries. We also assessed the effect of vaccination coverage and VOC status by major region (table 1). Countries with high-coverage vaccination programmes in the Middle East reported higher numbers of VOCs, while countries with low vaccination coverage detected higher numbers of non-VOCs. In the North Africa region, most of the infections were by non-VOCs for both vaccination groups. None of the fragile or conflict-affected countries had a vaccination coverage of 40%, but the highest number of infections were reported as being from VOCs. All of the conflicted countries



**Figure 3** Timeline for the distribution for the detected clades, variants of interest (VOIs) and numbers of COVID-19 infections and related deaths from the first detected SARS-CoV-2 infection until August 2021 in the North Africa area by country. The left y-axis depicts the numbers of clades (represented in the plot by bars), monthly deaths (represented by the red line) and infections by variants of concern (VOCs; represented by the blue line). The right y-axis depicts the numbers of infections each month (yellow line). Light-red shaded vertical rectangles represent the reported lockdown periods.

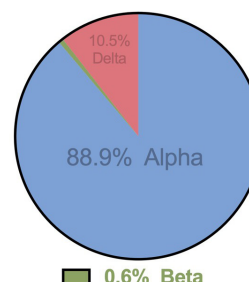


### A.1 Fragile and conflict-affected countries

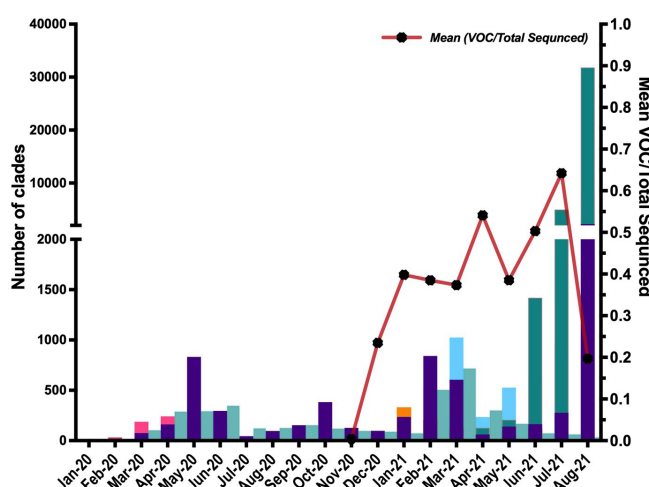


### A.2

#### VOCs Distribution

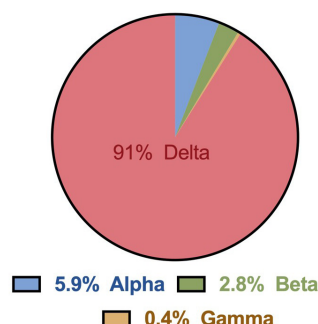


### B.1 Middle East Countries

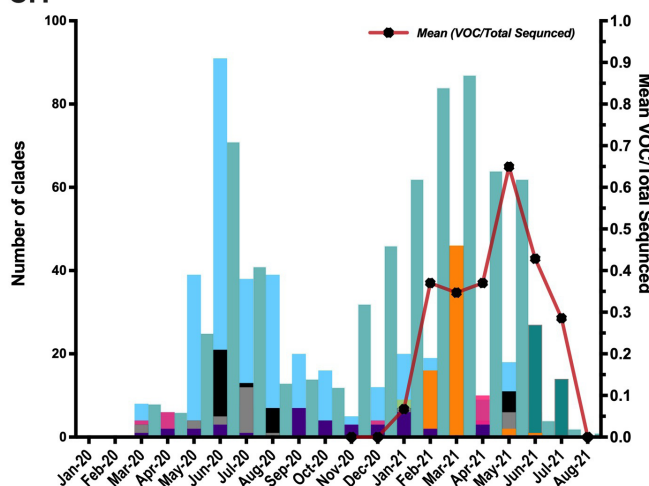


### B.2

#### VOCs Distribution

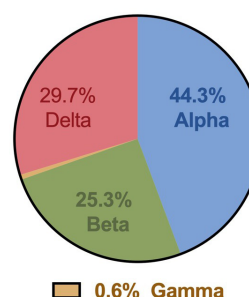


### C.1 North African Countries



### C.2

#### VOCs Distribution



**Figure 4** (A.1) Timeline for the distribution of clades with the mean percentage of VOCs detected from the total sequenced samples in fragile and conflicted region. (A.2) Pie chart representing the percentages of VOCs detected in fragile and conflicted region. (B.1) Timeline for the distribution of clades with the mean percentage of VOCs detected from the total sequenced samples in the Middle East region. (B.2) Pie chart representing the percentages of VOCs detected in the Middle East region. (C.1) Timeline for the distribution of clades with the mean percentage of VOCs detected from the total sequenced samples in the North African region. (C.2) Pie chart representing the percentages of VOCs detected in the North African region. VOCs, variants of concern.

**Table 1** Cumulative numbers of infections by date and variant status in the major MENA regions.

Date	Major region						$\chi^2$ (p value) 13 874.9 ( $<0.0001$ )*
	Middle East		North Africa		Fragile and conflict-affected		
	VOC	Non-VOC	VOC	Non-VOC	VOC	Non-VOC	
January 2020	0	19	0	0	0	0	
February	0	71	0	0	0	9	
March	0	476	0	26	0	34	
April	0	926	0	21	0	1	
May	0	1785	0	72	0	10	
June	0	954	0	201	0	95	
July	0	218	0	113	0	26	
August	0	322	0	61	0	22	
September	0	355	0	45	0	10	
October	0	556	0	34	0	15	
November	3	260	0	43	0	54	
December	59	281	0	69	5	18	
January 2021	437	346	8	107	73	79	
February	414	1937	25	114	277	71	
March	615	2024	95	93	331	5	
April	486	318	22	76	2	214	
May	361	759	16	91	11	3	
June	1647	784	34	5	12	0	
July	5009	1278	14	3	69	0	
August	32 341	9525	0	1	0	0	
Vaccination status							31 626.7 ( $<0.0001$ )
Below 40% coverage	327	1040	214	1140	780	666	
Above 40% coverage	41 945	22 154	0	35	0	0	
*Tested regions against date weighted by VOC infections detected (From November 2020 to August 2021). MENA, Middle East and North Africa; VOC, variants of concern.							

\*Tested regions against date weighted by VOC infections detected (From November 2020 to August 2021). MENA, Middle East and North Africa; VOC, variants of concern.

individually showed a higher number of non-VOCs, except for Lebanon, which reported a higher number of VOCs and thus skewed the distribution. The number of samples with VOCs in the conflict-affected region without Lebanon was 89, and the number of samples with non-VOCs in these regions was 330.

Table 2 shows the mean distributions of VOCs and clades by major region. The Middle East region reported the most VOCs overall, and the most frequently reported VOC was Delta (91%). The association between region and VOCs was statistically significant ( $p<0.0001$ ), with different VOCs reported in each region. For both North Africa and the fragile and conflict-affected countries, the Alpha variant was most common, and a significant association was found between clades and region. Most of the clades were detected in the Middle East, except for the L clade, which was detected primarily in the North Africa region (55.2%). For the Middle East, the most frequently reported clades were GK (59%), G (18.8%)

and GR (10.6%). For the North African region, the most common clades were GH (45.6%) and G (27.4%). In the fragile and conflict-affected countries, GR (67.3%), O (8.2%) and G (2.3%) were the most common clades.

#### Chronological distribution of pooled SARS-CoV-2 clade and VOC data in the MENA region

Data from all countries in the MENA regions were pooled and analysed. The distribution of the pooled clade data is shown in figure 5. Data for first cases were collected in February 2020, and many of these infections belonged to the O clade. In 2020, the GR clade was the most common, followed by the GH clade. In 2021, from January to March, the most common clades were GR, G and GH, and from May 2021 to August, the G and GK clades dominated. The proportion of VOCs for variants sequenced in the MENA region from November 2020 to August 2021 is shown in figure 6. In November 2020, approximately 99% of the infections were not caused by VOCs. In January

**Table 2** Infections by variant of concern and clades and variant of interest in the major MENA regions

	Region			$\chi^2$ (p value)
	Middle east	North africa	Fragile and conflict-affected	
	No (row %) (column %)	No (row %) (column %)	No (row %) (column %)	
Variants of concern (VOC)				
Alpha (B.1.1.7)	0	70 (2.20) (44.30)	693 (21.8) (88.8)	2790.6 (<0.0001)
Beta (B.1.351)	1139 (96.20) (2.8)	40 (3.40) (25.3)	5 (0.42) (0.64)	2107.2 (<0.0001)
Gamma (P.1)	155 (99.4) (0.38)	1 (0.64) (0.63)	0	152.0 (<0.0001)
Delta (B.1.617.2)	37 552 (99.66) (91)	47 (0.12) (29.74)	82 (0.22) (10.5)	74 590.0 (<0.0001)
Global $\chi^2$ (p value)	8199.6 (<0.0001)			
Clades				
G	12 117 (96.2) (18.77)	381 (3.02) (27.43)	103 (0.82) (7.25)	22 390 (<0.0001)*
GH	3824 (83.9) (5.92)	634 (13.9) (45.64)	98 (2.2) (6.90)	5343.8 (<0.0001)*
GR	6843 (87.3) (10.60)	37 (0.47) (2.66)	956 (12.2) (67.32)	10 441.9 (<0.0001)*
GRY	941 (88.5) (1.46)	66 (6.2) (4.75)	56 (5.27) (3.94)	1457.1 (<0.0001)*
GV	100 (62.5) (0.15)	57 (35.6) (4.10)	3 (1.89) (0.21)	88.6 (<0.0001)*
L	63 (44.1) (0.10)	79 (55.2) (5.69)	1 (0.70) (0.07)	71.2 (<0.0001)*
O	1550 (90.2) (2.40)	52 (3.03) (3.74)	116 (6.8) (8.17)	2505.5 (<0.0001)*
S	397 (92.97) (0.61)	28 (6.6) (2.02)	2 (0.47) (0.14)	685.8 (<0.0001)*
V	164 (93.7) (0.25)	8 (4.6) (0.58)	3 (1.7) (0.21)	287.3. (<0.0001)*
GK	38 568 (99.7) (59.73)	47 (0.12) (3.38)	82 (0.21) (5.77)	766.21 (<0.0001)*
Global $\chi^2$ (p value)	11 981(<0.0001)*			
Variant of interest				
Epsilon	0	0	0	NA
Zeta	3 (100) (2.8)	0	0	NA
Eta	89 (61.4) (82.4)	56 (38.2) (100)	0	NA
Theta	0	0	0	NA
Lota	0	0	0	NA
Kappa	16 (100) (14.8)	0	0	NA
Lambda	0	0	0	NA
*P<0.05 considered statistically significant. MENA, Middle East and North Africa; NA, not applicable.				

\*P<0.05 considered statistically significant.

MENA, Middle East and North Africa; NA, not applicable.

2021, the Alpha variant was competing with non-VOCs, each causing 50% of the reported infections. In March, the Delta variant was first detected, and the percentage of sequenced variants that were Delta increased through July, with the percentage in August 2021 being nearly 80%.

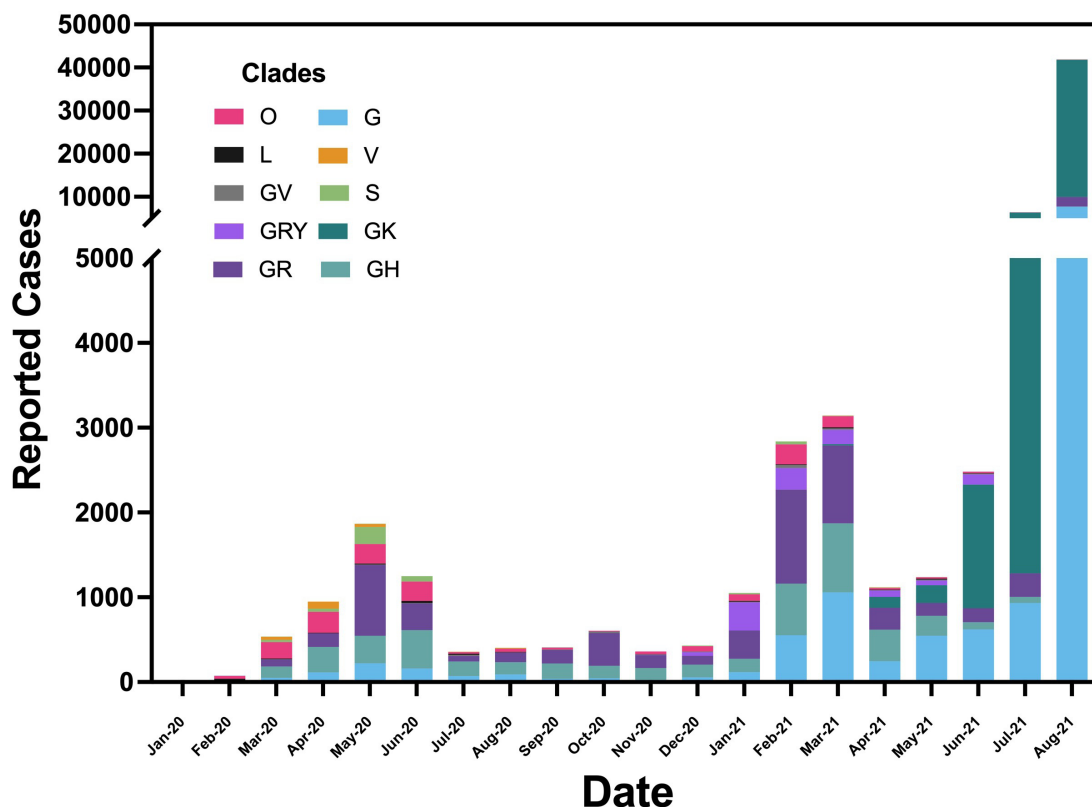
### Impacts of vaccination status and VOCs in the MENA region

A summary of the available COVID-19 vaccination information in the MENA region by country is given in table 3. In the Middle East Region, the countries having the highest percentage of the total population with at least one vaccine dose were UAE (84.93%) and Qatar (79.14%), whereas those with the lowest were Iran (21.48%) and Kuwait (33.55%). The only countries in the MENA region that reached a total percentage of the population vaccinated with two doses above 70% by August 2021 were

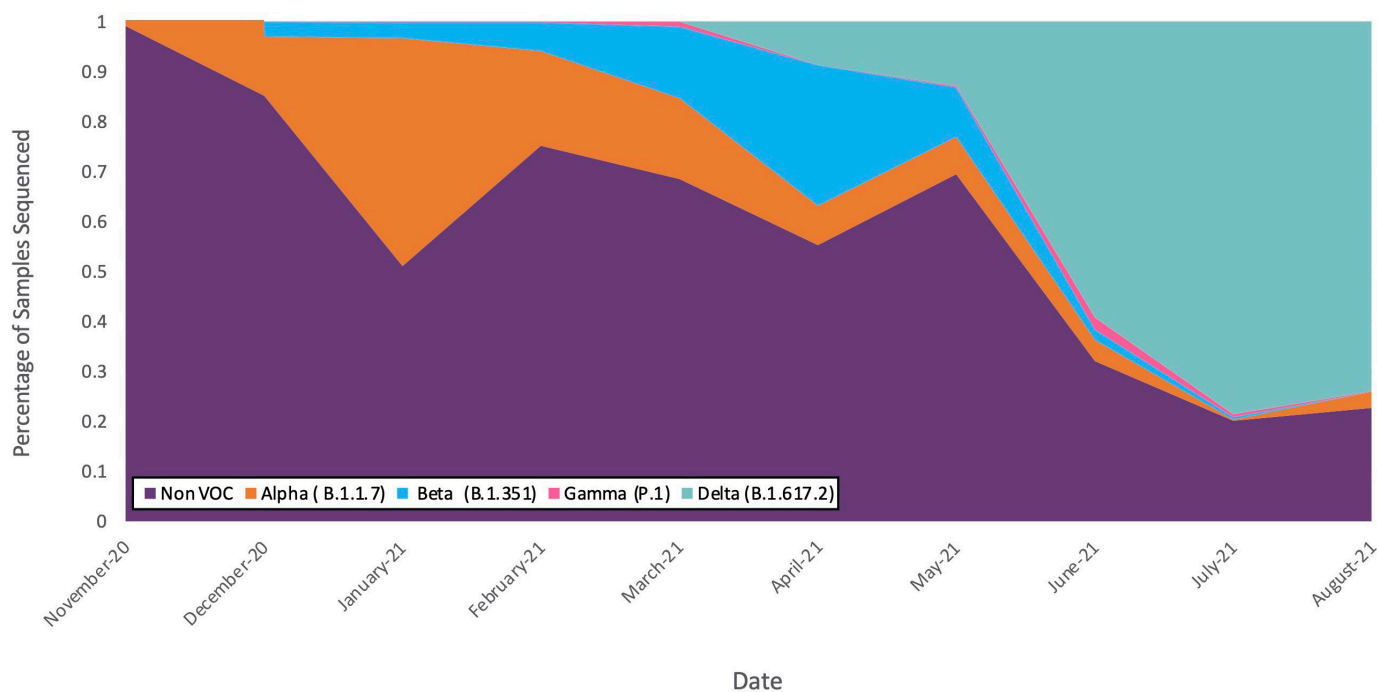
UAE and Qatar. In the North Africa region, the countries having the highest percentage of the total population with at least one vaccine dose were Morocco (49.22%) and Tunisia (35.02%), whereas those with the lowest were South Sudan (0.98%) and Sudan (1.43%). In the fragile and conflict-affected countries, the highest percentage of the total population with at least one vaccine dose were Palestine (26.96%) and Lebanon (19.99%), whereas the lowest were Yemen (0.97%) and Somalia (1.19%).

The vaccination coverage and mean percentage of sequenced variants that were VOCs in each country of the MENA region are illustrated in figure 7. Figure 7A shows the distribution of percentage of the total population in each country that received in the MENA region. Overall, the countries with the highest percentages of the total population receiving at least one vaccination were in





**Figure 5** Timeline for the distribution of the pooled clades in the MENA region. Cases were first detected in February 2020. Bar colours represent the number of reported infections belonging to each clade by month. MENA, Middle East and North Africa.



**Figure 6** The percentage of VOC status for samples sequenced in the MENA region from November 2020 to August 2021. In November 2020, approximately 99% of infections were caused by variants that were not VOC. However, in August 2021, the percentage of sequenced genomes that were the Delta variant was approximately 80%. MENA, Middle East and North Africa; VOC, variants of concern.

**Table 3** Vaccination coverage and testing capacity for each country in the MENA region

Country	Total doses given	Per 100 people	Percentage of population fully vaccinated (2 doses)	Percentage of population partially vaccinated (1 dose)	Percentage of total population with $\geq 1$ vaccination	Up to 70% of population vaccinated with 2 doses	Vaccine(s) used	Testing capacity per 1000 people
<b>Middle East</b>								
Saudi Arabia	37.2 M	105.21	42.30	21.09	62.39	October 13, 2021	Oxford/AstraZeneca, Pfizer/BioNTech	0.43
UAE	18.2 M	181.97	74.24	10.69	84.93	Reached	Oxford/AstraZeneca, Pfizer/BioNTech, Sinopharm/Beijing, Sinopharm/Wuhan, Sputnik V	29.2
Bahrain	2.5 M	142.46	62.29	3.17	65.64	Reached	Oxford/AstraZeneca, Pfizer/BioNTech, Sinopharm/Beijing, Sputnik V	3.2
Kuwait	3.1 M	70.77	21.33	12.22	33.55	May 17, 2022	Pfizer/BioNTech	1.6
Oman	3.8 M	73.27	20.07	27.87	47.94	November 5, 2021	Oxford/AstraZeneca, Pfizer/BioNTech, Sinovac, Sputnik V	NA
Qatar	4.4 M	151.75	71.47	7.66	79.13	Reached	Moderna, Pfizer/BioNTech	6.3
Jordan	6.4 M	62.5	28.44	5.16	33.60	May 11, 2022	Oxford/AstraZeneca, Pfizer/BioNTech, Sinopharm/Beijing, Sputnik V	1.76
Iran	27.5 M	32.37	9.31	12.17	21.48	February 2, 2022	COVIran Barekat, Covaxin, Oxford/AstraZeneca, Sinopharm/Beijing, Sputnik V	0.72
Turkey	94.9 M	110.7	44.46	13.19	57.65	October 15, 2021	Pfizer/BioNTech, Sinovac	3.18
<b>North Africa</b>								
Algeria	4.4 M	9.87	1.62	6.04	7.66	October 7, 2028	Oxford/AstraZeneca, Sinopharm/Beijing, Sputnik V	NA
Egypt	9.3 M	9.37	3	2.39	5.39	February 9, 2023	Johnson&Johnson, Oxford/AstraZeneca, Pfizer/BioNTech, Sinopharm/Beijing, Sinovac, Sputnik V	0.13
Morocco	33.7 M	89.61	39.18	10.04	49.22	November 3, 2021	Oxford/AstraZeneca, Sinopharm/Beijing	0.18
Tunisia	5.8 M	48.84	18.06	16.96	35.02	December 15, 2021	Johnson&Johnson, Moderna, Oxford/AstraZeneca, Pfizer/BioNTech, Sinopharm/Beijing, Sinovac, Sputnik V	0.25
Sudan	831.2 K	1.85	0.41	1.02	1.43	July 19, 3110	Johnson&Johnson, Oxford/AstraZeneca, Pfizer/BioNTech, Sinopharm/Beijing, Sinovac	NA
South Sudan	111.8 K	0.98	0.28	0.70	0.98	April, 1, 2093	Oxford/AstraZeneca	NA
Djibouti	60 K	6	2.37	1.25	3.62	April 15, 2035	Johnson&Johnson, Oxford/AstraZeneca, Pfizer/BioNTech, Sinopharm/Beijing, Sinovac, Sputnik	0.46
<b>Fragile and conflict-affected countries</b>								
Syria	413 K	2.26	0.86	0.40	1.26	March 26, 2048	Johnson&Johnson, Oxford/AstraZeneca, Sinopharm/Beijing, Sinovac, Sputnik V	<0.01
Lebanon	2.4 M	36.19	15.99	4	19.99	February 1, 2023	Oxford/AstraZeneca, Pfizer/BioNTech, Sinopharm/Beijing, Sputnik V	NA
Yemen	344.8 K	1.13	0.04	0.93	0.97	February 15, 2145	Oxford/AstraZeneca	NA

Continued

**Table 3** Continued

Country	Total doses given	Per 100 people	Percentage of population fully vaccinated (2 doses)	Percentage of population partially vaccinated (1 dose)	Percentage of total population with $\geq 1$ vaccination	Up to 70% of the population vaccinated with 2 doses	Vaccine(s) used	Testing capacity per 1000 people
Iraq	3.4 M	8.37	1.20	0.80	2.00	August 4, 2024	Oxford/AstraZeneca, Pfizer/BioNTech, Sinopharm/Beijing, Sputnik V	0.33
Palestine	1.39 M	26.97	8.76	18.20	26.96	March 5, 2022	Moderna, Oxford/AstraZeneca, Pfizer/BioNTech, Sputnik V	NA
Libya	1.1 M	16.2	1.15	12.52	13.67	February 10, 2023	Johnson&Johnson, Moderna, Oxford/AstraZeneca, Pfizer/BioNTech, Sinopharm/Beijing, Sinovac, Sputnik V	NA
Somalia	292.5 K	1.8	0.59	0.60	1.19	December 20, 2086	Johnson&Johnson, Oxford/AstraZeneca, Sinopharm/Beijing, Sinovac	NA

Data were collected from our world data and modelled with the COVID-19 Vax model.<sup>23 24</sup> M represents million. K, thousand; MENA, Middle East and North Africa; NA, not available.

the Gulf area, Turkey and Morocco, whereas the lowest percentages were in the fragile and conflicted-affected countries. The highest (mean) percentages of all the sequenced samples that were VOCs were in South Sudan (81%), Jordan (76%), Lebanon (68%), Bahrain (53%) and Qatar (58%), whereas the lowest were in Morocco (0%), Egypt (0%) and Saudi Arabia (6%). The percentages of the total sequenced genomes that were VOCs were significantly different by country ( $F=1.93$ ,  $p=0.0112$ ,  $R=0.088$ ) but not by major MENA region ( $F=0.14$ ,  $p=0.27$ ,  $R=0.006$ ) nor by vaccination coverage ( $F=1.84$ ,  $p=0.176$ ,  $R=0.005$ ). The testing capacity per thousand cases in The MENA region indicated that the top countries were UAE (29.9), followed by Qatar (6.3) and Bahrain (3.2), and the lowest countries were Egypt (0.13) and Morocco (0.18). Furthermore, many countries, including Oman, Algeria, Sudan, South Sudan, Lebanon, Palestine, Yemen, Somalia and Libya, had no data available.

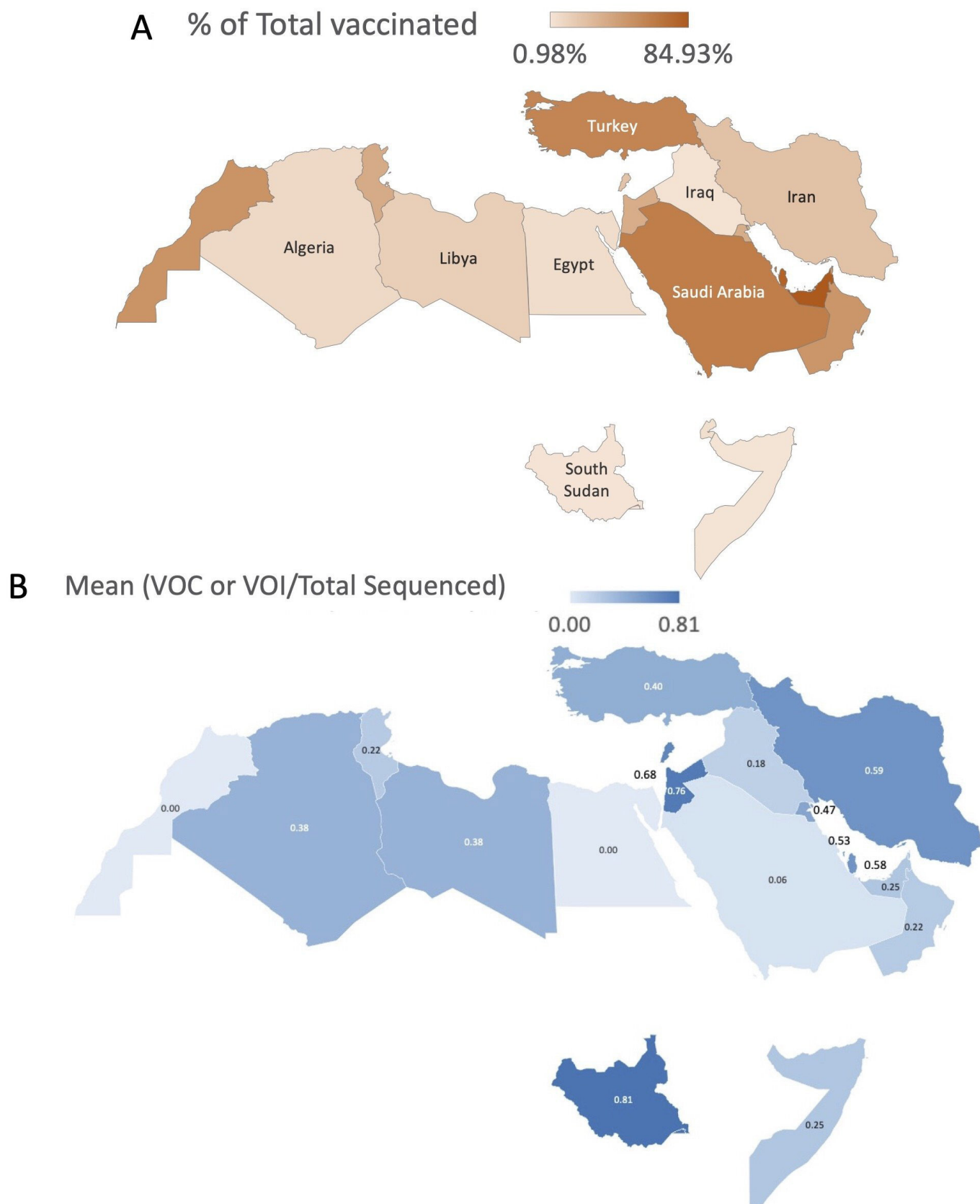
### Phylogenetic and phylogeographical analyses of SARS-CoV-2 in the MENA region

Figure 8A shows the phylogenetic tree of SARS-CoV-2 based on a Bayesian model with respect to time. The analysis includes two main branches. The colour-coded subbranches were constructed to make interpretation clearer and to distinguish the subgroups.

The first group (light-greenish blue) mainly included samples from Saudi Arabia, Morocco and the Levant countries. The second group (light-purple) included samples from the Gulf countries Turkey and Iraq. The third group (light-brown) included samples only from Lebanon. The fourth group (pink) included samples from Gulf countries (primarily Saudi Arabia and Qatar), North Africa countries and Palestine. The fifth branch (light-blue), which was the largest group, included most of the Iraqi samples in the upper subgroup and a mixed sample from the North Africa countries Egypt and Morocco, Levant countries, Iran and the Gulf countries of Qatar, UAE, Saudi Arabia and Oman in the second subgroup. A Somali sample was located in the same branch.

For the lower main branch, the first group (yellow) shared an ancestral strain from Saudi Arabia and then branched to primarily Lebanon but included other countries (Kuwait, Algeria, Tunisia and Oman). The second group (light-red) was divided into two main subgroups. The first subgroup included mainly the Levant region, North Africa and UAE. The second subgroup included Levant countries, Gulf countries and Egypt. Two samples from Djibouti were also in that subgroup. The third group (light-orange) branched from a Moroccan sample to Djibouti, Iraq, Egypt, Somalia, Iran, Qatar and Tunisia. The fourth main branch (light-green) included many conserved branches. One of the conserved groups primarily included samples from Djibouti, with another branch showing samples only from Iraq and the rest of the branches having samples mainly from the Gulf and Levant countries. Overall, only a few countries showed highly conserved subgroups, such as Djibouti, Lebanon

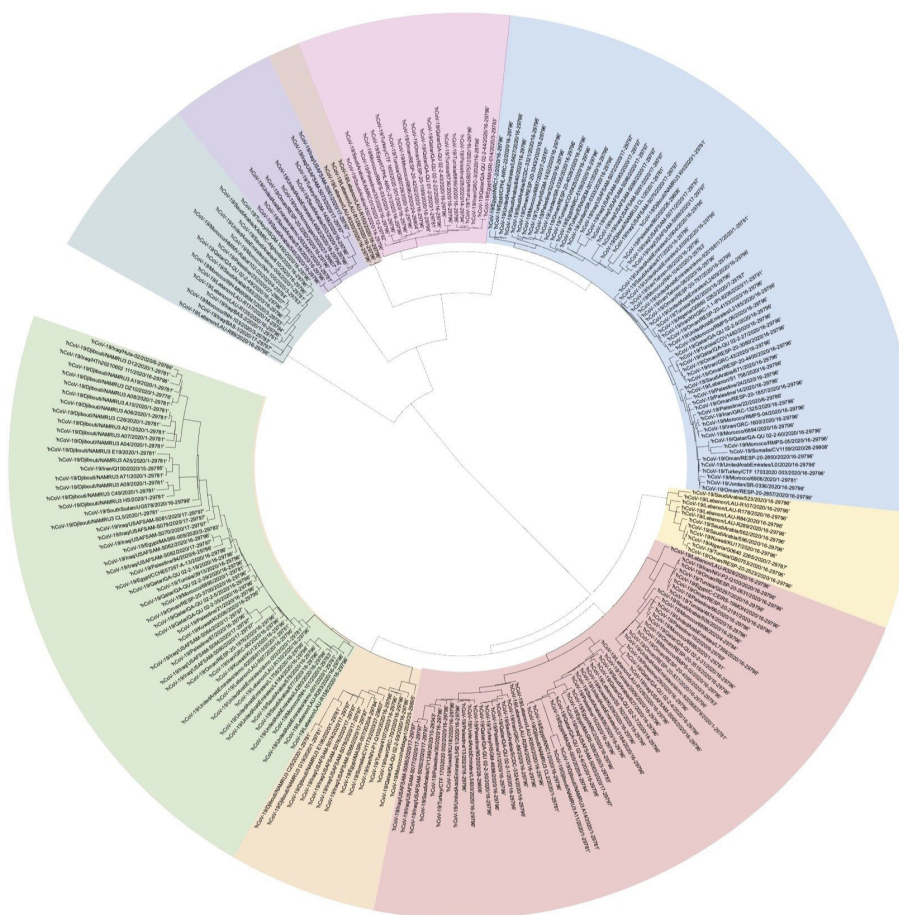




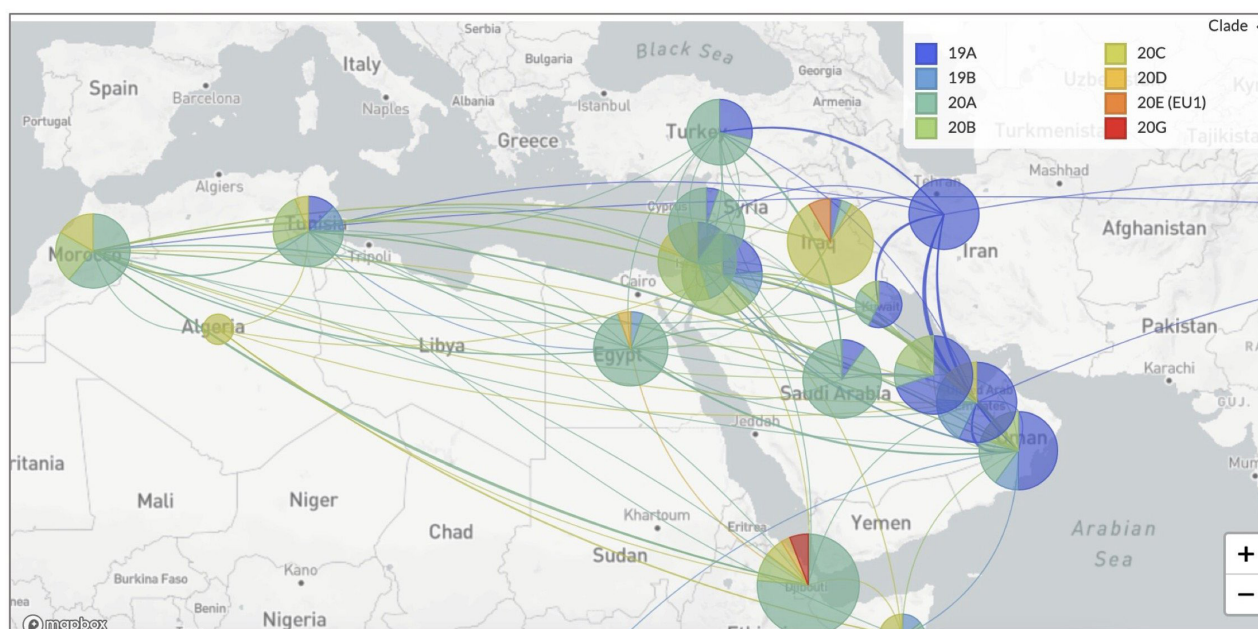
**Figure 7** Maps of the MENA region showing (A) the percentage of the total population in each country that received  $\geq 1$  COVID-19 vaccination. In the Middle East region, higher percentages of vaccinated people were found in the Gulf area and Turkey; and (B) Percentages of the total sequenced genomes in each country that that were attributed to variants of concern (VOC) or variants of interest (VOI). MENA, Middle East and North Africa.

A

Tree scale: 1



B



**Figure 8** Summary of the phylodynamic and phylogeographical analysis of SARs-CoV-2 in the MENA region. (A) Phylogenetic tree showing SARs-CoV-2 in the MENA region. The phylogenetic analysis used 251 sequences from the GISAID portal. Colour codes distinguish various subbranches of coronaviruses in the region. The phylogenetic tree was constructed using BEAST and the gamma model, with ITOL tool for visualisation. (B) Distribution of SARs-CoV-2 in the MENA region by transmission. The analysis shows ancestral SARs-CoV-2 strains first imported to Iran and then to the Gulf countries and North Africa countries and lastly to the Levant region. An animation can be viewed at <https://nextstrain.org/community/obeiddx/MENA/ncov>. GISAID, Global Initiative on Sharing All Influenza Data; ITOL, interactive tree of life; MENA, Middle East and North Africa.

and Iraq. Other countries, specifically Saudi Arabia, Qatar, UAE and Morocco, were distributed across many branches.

Figure 8B shows the phylogeographical analysis of SARS-CoV-2 using the Nextstrain pipeline. The map gives the distribution of clades with transmission lines. The results indicated that the first cases from the ancestral strains were brought from China to Iran, and then there were many lines from Iran to the rest of the Gulf countries and Turkey. Morocco, Saudi Arabia, Qatar and Lebanon harboured early strains associated with travellers, but none directly from China. Many of Moroccan samples were connected to UAE samples. An animation of the transmission analysis can be viewed on a Nextstrain webpage at <https://nextstrain.org/community/obeiddx/MENA/ncov>.

## DISCUSSION

This study described the genomic distribution of SARS-CoV-2 and COVID-19 epidemiology in the MENA region from January 2020 to August 2021. Our key findings indicated that all countries in the Gulf Cooperation Council, the first SARS-CoV-2 infections were variants belonging to the GR or O clade, except Saudi Arabia, in which the first detected variants belonged to the GH clade. In the remaining Middle East countries, the first variants also belong predominantly to the GR clade, except for Iraq and Iran, in which the variants belonged to the O clade. Overall, the number of sequenced samples in the MENA region was lowest in the African countries. The distribution of clades in the African region differed by country: the G clade first appeared in Egypt and Morocco, while the GH clade was detected in Algeria and Tunisia, and the S clade was detected in Libya and South Sudan. Other African countries showed distinctive first clades compared with other MENA region countries, such as the GR clade in Djibouti and the V clade in Somalia. Analysis of the Middle East region alone showed that the SARS-CoV-2 variants predominately belonged to the GR and GH clades. Although Alpha was the first VOC detected in the region, by August 2021, the most common VOC was Delta, comprising nearly ~91% of all VOC samples. In the North African region, the first cases of SARS-CoV-2 belonged to the G and GH clades. Not only was Alpha the first variant detected, it was also most predominant VOC (~44.3%), followed by Delta (~29.7%), and Beta (~25.3%). In the fragile and conflict-affected regions, the most common clades were GR and GH, and similar to the rest of the MENA region, Alpha was the first VOC and also the predominant variant (~88.9%), followed by Delta (~10%).

In another study analysing the chronologic development of SARS-CoV-2 variants worldwide, samples that were sequenced up to January 2021 showed that the most common clades globally were GR (34%), followed by GV (22.3%), and GH (21.4%).<sup>29</sup> We found that as of August 2021, most variants belonged to the GK clade (57.4%

of the total samples), followed by the G (18.7%), GR (11.6%), and GH (6.8%) clades. The GV clade was not common in the MENA region, with only 160 cases overall. The first variants detected in the MENA region belonged to the GH and S clades and were detected among European travellers to Qatar and UAE in January 2020.

Our analyses of vaccination coverage and VOC vs non-VOC status by MENA region indicated that countries with high-coverage vaccination programmes had more cases with VOCs, whereas countries with low coverage had higher numbers of non-VOC cases. These findings suggest that the Delta variant may have adapted and transmitted more successfully than the other virus lineages in population with high vaccination coverage. The distribution in the MENA regions of VOCs versus non-VOC by date was significantly different ( $\chi^2=13\,874$ ,  $p<0.0001$ ). Additionally, in the Middle East, infections attributable to VOCs were increasing, while the numbers were not as high in North Africa and in the fragile and conflict-affected countries (except for Lebanon). An analysis of each country, however, shows a different pattern for the association of vaccination coverage with the emergence of infections attributable to VOCs. Higher vaccination coverage in some countries, such as Saudi Arabia and the UAE, was not associated with more cases attributable to VOCs, and lower vaccination coverage in other countries, such as South Sudan and Jordan, had more infections by VOCs. These statistically significant associations were found only for countries, not for overall regions.

The evolution of SARS-CoV-2 can be viewed as being driven by three factors: virulence, transmissibility and immune evasion. The success of the current VOCs appears to be a trade-off between increasing transmissibility and immunogenic adaptation of the host.<sup>30</sup> Many international studies have shown Delta was the dominating SARS-CoV-2 variant in 2020. France reported in June 2020 an estimated transmission advantage of 66% for Delta over Alpha. The Delta variant also showed a greater transmission advantage than the other VOCs, while Alpha had the least advantage.<sup>31</sup> Similarly in the UK, the Alpha variant was originally found in approximately 80% of all samples but by August 2020, Delta was detected in 96% of the samples. A similar domination of the Delta variant has been reported worldwide.<sup>32 33</sup>

The fitness of the Delta variant can be shown by its estimated reproduction number of  $R_0=5.08$  compared with an  $R_0=2.8$  for the ancestral strain.<sup>34</sup> This superior capability of the Delta variant over all the other variants that have emerged to date is linked to the P681R mutation, which enhance virus replication by increased full-length spike cleavage that leads to increased infection via cell surface entry.<sup>35</sup> As of 2 April 2022, the Delta variant was overtaken by yet another variant: Omicron. The Omicron variant B.1.1.529 was first detected in South Africa November 2021.<sup>36</sup> The first Omicron variant subtype was B.A.1; in March 2022, the dominating subtype circulating throughout the world was B.A.2.<sup>37</sup> This continuous evolution of the virus is especially a



threat to countries with low income and low vaccination rates.

Countries in the MENA region with low vaccination rates and many cases of infection with the Delta variant are at high risk of increasing hospital admissions and emergency attendance.<sup>38</sup> The dominance of the Delta variant is also a concern due to its association with vaccine breakthrough cases reported in Washington state in the US, with almost 85% of the vaccine breakthrough cases being positive for Delta.<sup>33</sup> In Saudi Arabia, most (71%) breakthrough cases involved VOCs, and breakthrough infections were also common among patients who received one dose of the Oxford-AstraZeneca vaccination.<sup>39</sup>

From a bioinformatics perspective, one study found that SARS-CoV-2 infections in the Middle East region originated in Iran.<sup>40</sup> At the beginning of the pandemic, Qom city, Iran, hosted a religious event conducted as a pilgrimage, and infection was spread to the Middle East before travel suspension was instituted.<sup>41</sup> Another bioinformatics study analysing the MENA region has shown Dubai, UAE, to be a travel hub for SARS-CoV-2, with numerous infections introduced from both Iran and Europe.<sup>42</sup> In Africa, there were more than 211 separate presentations of the virus, of which 43% were from Europe.<sup>43</sup> Our phylogeographical analysis also indicated that Iran was the first country in which the ancestral strain from China was detected. Then UAE, Saudi Arabia, Morocco, Qatar and Lebanon served as hot spots spreading active infections across many countries in the MENA region. Our phylodynamic analysis showed that some of the samples from Lebanon, Djibouti and Iraq were conserved independently from other countries.

Genomic surveillance has and will continue to play a vital role in enhancing the response of public health affairs during the pandemic. Examples of countries with excellent genomic surveillance are Palestine, Libya and Lebanon. In Syria, Yemen and Sudan, no genomic sequences were collected, whereas Iraq and Somalia used international collaboration to conduct genomic surveillance. However, many countries are currently facing vaccination coverage challenges, especially in the MENA region, and in the fragile and conflict-affected countries, more humanitarian assistance is required.

Public health officers in African regions hit hard by the Ebola endemic in the last decade learnt the importance of international collaboration. Unfortunately, extensive collaborations of COVID-19 network laboratories do not include any North Africa countries, indicating a weak link in SARS-CoV-2 surveillance in low-income countries in Africa.<sup>44</sup> Furthermore, a major challenge that plays a significant role in public health decisions in the MENA region is data sharing and its direct impact on economic growth. Although some high-income countries, such as the Gulf Cooperation Council countries, can generate high-coverage surveillance of the virus, many countries choose not to share these data with the global community or even with other countries in the MENA region, claiming sensitive internal affairs issues.<sup>45</sup> By contrast,

Qatar has a robust genomic surveillance programme and has shared their findings each month during the pandemic.

Our study has some limitations. The genomic sequences assessed in this study were collected from the GISAID database; however, because the samples were processed using different sequencing platforms and methods, any effects across the analysis were likely negligible. The data were diverse across the months, with some countries reporting low numbers of samples sequenced. Host data were not integrated into our analysis owing to samples uploaded to GISAID with no metadata. No data were available from some fragile and conflict-affected countries, including Yemen and Syria. Moreover, the genomic data were also limited by testing capacity and the availability of sequencing resources, which remain a major challenge in some low-income countries.

In conclusion, this study contributes to the knowledge on the evolution and circulation patterns of SARS-CoV-2 in the MENA region. The MENA region is one of the most highly populated areas in the world. Overall, our findings suggest multiple international introductions of SARS-CoV-2 variants from European travellers to Qatar and UAE and ancestral strains from Iran. By the summer of 2021, the genomic advantage for the Delta variant enabled it to dominate the other variants in the MENA region, as well as globally. Because the MENA area includes many fragile and conflict-affected countries, genomic surveillance is not prioritised in already strained health systems with low levels of testing and low numbers of vaccinations. This health crisis along with economic and political burnout in fragile countries could lead to catastrophic consequences in terms of human lives and rights if no actions are taken by world leaders.

**Twitter** Dalia Obeid @obeiddx92

**Acknowledgements** The authors acknowledge with thanks the support of Aroob Alhumaiddi for her bioinformatic resources support.

**Contributors** DO, RA and FaA: Conceptualisation, MAI, BA, FaA and MAB: helped in methodology. All authors were involved in manuscript writing and methodology, analysis was done by DO, FaA and AAA-Q edited the final manuscript. All authors read and approved the contents of the manuscript.

**Funding** This work was fully funded by a King Faisal Specialist Hospital and Research Centre COVID-19 grant (RAC #2200009).

**Map disclaimer** The inclusion of any map (including the depiction of any boundaries therein), or of any geographic or locational reference, does not imply the expression of any opinion whatsoever on the part of BMJ concerning the legal status of any country, territory, jurisdiction or area or of its authorities. Any such expression remains solely that of the relevant source and is not endorsed by BMJ. Maps are provided without any warranty of any kind, either express or implied.

**Competing interests** None declared.

**Patient and public involvement** Patients and/or the public were not involved in the design, or conduct, or reporting, or dissemination plans of this research.

**Patient consent for publication** Not applicable.

**Ethics approval** This study was approved by the ethics committee which waived the need for obtaining informed patient consent because all data are publicly available.

**Provenance and peer review** Not commissioned; externally peer reviewed.

**Data availability statement** Data are available on reasonable request.

**Supplemental material** This content has been supplied by the author(s). It has not been vetted by BMJ Publishing Group Limited (BMJ) and may not have been peer-reviewed. Any opinions or recommendations discussed are solely those of the author(s) and are not endorsed by BMJ. BMJ disclaims all liability and responsibility arising from any reliance placed on the content. Where the content includes any translated material, BMJ does not warrant the accuracy and reliability of the translations (including but not limited to local regulations, clinical guidelines, terminology, drug names and drug dosages), and is not responsible for any error and/or omissions arising from translation and adaptation or otherwise.

**Open access** This is an open access article distributed in accordance with the Creative Commons Attribution Non Commercial (CC BY-NC 4.0) license, which permits others to distribute, remix, adapt, build upon this work non-commercially, and license their derivative works on different terms, provided the original work is properly cited, appropriate credit is given, any changes made indicated, and the use is non-commercial. See: <http://creativecommons.org/licenses/by-nc/4.0/>.

#### ORCID iD

Fatimah S. Alhamlan <http://orcid.org/0000-0003-1765-4310>

#### REFERENCES

- Al-Qahtani AA. Severe acute respiratory syndrome coronavirus 2 (SARS-CoV-2): emergence, history, basic and clinical aspects. *Saudi J Biol Sci* 2020;27:2531–8.
- Zheng Y, Zhuang M-W, Han L, et al. Severe acute respiratory syndrome coronavirus 2 (SARS-CoV-2) membrane (M) protein inhibits type I and III interferon production by targeting RIG-I/MDA-5 signaling. *Signal Transduct Target Ther* 2020;5:299.
- WHO. *Global research on coronavirus disease (COVID-19)*, 2021.
- OECD. *COVID-19 crisis response in MENA countries. OECD, tackling coronavirus contrib to a glob effort*, 2020: 1–39.
- UNICEF. *Social protection responses to the COVID-19 crisis in the MENA/Arab states region*, 2020: 1–7.
- Yezli S, Khan A. COVID-19 social distancing in the Kingdom of Saudi Arabia: BOLD measures in the face of political, economic, social and religious challenges. *Travel Med Infect Dis* 2020;37:101692.
- Deng X, Gu W, Federman S, et al. Genomic surveillance reveals multiple introductions of SARS-CoV-2 into Northern California. *Science* 2020;369:582–7.
- Zhang Y, Duan Y, Ma J, et al. State fragility and the coronavirus disease 2019 (COVID-19) pandemic: an ecologic analysis of data from 146 countries. *Glob Health J* 2021;5:18–23.
- Point RB. *COVID-19 in fragile contexts*, 2020.
- WHO. *Guidance for surveillance of SARS-CoV-2 variants: interim guidance*, 2021.
- Inouye M, Dashnow H, Raven L-A, et al. SRST2: rapid genomic surveillance for public health and hospital microbiology labs. *Genome Med* 2014;6:90.
- Paul P, France AM, Aoki Y, et al. Genomic surveillance for SARS-CoV-2 variants circulating in the United States, December 2020–May 2021. *MMWR Morb Mortal Wkly Rep* 2021;70:846–50.
- Oude Munnink BB, Worp N, Nieuwenhuijse DF, et al. The next phase of SARS-CoV-2 surveillance: real-time molecular epidemiology. *Nat Med* 2021;27:1518–24.
- WHO. *Tracking SARS-CoV-2 variants*, 2021.
- Shu Y, McCauley J. GISAID: Global initiative on sharing all influenza data - from vision to reality. *Euro Surveill* 2017;22:30494.
- Rambaut A, Holmes EC, O'Toole Áine, et al. A dynamic nomenclature proposal for SARS-CoV-2 lineages to assist genomic epidemiology. *Nat Microbiol* 2020;5:1403–7.
- WHO. *Coronavirus disease 2019 (COVID-19) situation report 2020*.
- Dong E, Du H, Gardner L. An interactive web-based dashboard to track COVID-19 in real time. *Lancet Infect Dis* 2020;20:533–4.
- Nurunnabi M. The preventive strategies of COVID-19 pandemic in Saudi Arabia. *J Microbiol Immunol Infect* 2021;54:127–8.
- Cheikh Ismail L, Mohamad MN, Bataineh Mo'ath F, et al. Impact of the coronavirus pandemic (COVID-19) Lockdown on mental health and well-being in the United Arab Emirates. *Front Psychiatry* 2021;12:265.
- The US embassy. COVID19 information [online], 2021. Available: <https://dj.usembassy.gov/covid-19-information/> [Accessed 30 Aug 2021].
- The Turkish GOV. New COVID-related measures in effect starting November 2020 [online]. Available: <https://www.osac.gov/Country/Turkey/Content/Detail/Report/9bc0839f-2e83-446a-860f-1a2d5567cf7a> [Accessed 9 Aug 2021].
- Ritchie H, Ortiz-Ospina E, Beltekian D. Coronavirus (COVID-19) vaccinations [online], 2021. Available: <https://ourworldindata.org/coronavirus>
- Ioannou GN, Green P, Fan VS, et al. Development of COVIDVax model to estimate the risk of SARS-CoV-2-Related death among 7.6 million US veterans for use in vaccination prioritization. *JAMA Netw Open* 2021;4:e214347.
- Hasell J, Mathieu E, Beltekian D, et al. A cross-country database of COVID-19 testing. *Sci Data* 2020;7:345.
- Bouckaert R, Vaughan TG, Barido-Sottani J, et al. BEAST 2.5: an advanced software platform for Bayesian evolutionary analysis. *PLoS Comput Biol* 2019;15:e1006650.
- Letunic I, Bork P. Interactive tree of life (iTOL) V5: an online tool for phylogenetic tree display and annotation. *Nucleic Acids Res* 2021;49:W293–6.
- Hadfield J, Megill C, Bell SM, et al. Nextstrain: real-time tracking of pathogen evolution. *Bioinformatics* 2018;34:4121–3.
- Hamed SM, Elkhatab WF, Khairalla AS, et al. Global dynamics of SARS-CoV-2 clades and their relation to COVID-19 epidemiology. *Sci Rep* 2021;11:8435.
- Schmidt M, Arshad M, Bernhart SH, et al. The evolving faces of the sars-cov-2 genome. *Viruses* 2021;13:1764–36.
- Alizon S, Haim-Boukobza S, Foulongne V, et al. Rapid spread of the SARS-CoV-2 delta variant in some French regions, June 2021. *Euro Surveill* 2021;26:2100573.
- Public Health England. *SARS-CoV-2 variants of concern and variants under investigation in England*. Sage, 2021: 1–50.
- State W. SARS-CoV-2 sequencing and variants in Washington State Washington State Department of Health 2021:1–27.
- Liu Y, Rocklöv J. The reproductive number of the delta variant of SARS-CoV-2 is far higher compared to the ancestral SARS-CoV-2 virus. *J Travel Med* 2021;28:taab124.
- Liu Y, Liu J, Johnson BA, et al. Delta spike P681R mutation enhances SARS-CoV-2 fitness over alpha variant. *bioRxiv* 2021:456173.
- Maslo C, Friedland R, Toubkin M, et al. Characteristics and outcomes of hospitalized patients in South Africa during the COVID-19 omicron wave compared with previous waves. *JAMA* 2022;327:583–4.
- Lentini A, Pereira A, Winqvist O. Monitoring of the SARS-CoV-2 omicron BA.1/BA.2 variant transition in the Swedish population reveals higher viral quantity in BA.2 cases. *medRxiv* 2022.
- Twohig KA, Nyberg T, Zaidi A, et al. Hospital admission and emergency care attendance risk for SARS-CoV-2 delta (B.1.617.2) compared with alpha (B.1.1.7) variants of concern: a cohort study. *Lancet Infect Dis* 2022;22:35–42.
- Alhamlan F, Al-Qahtani A, Obeid D. SARS-CoV-2 delta variant predominant at a tertiary-care hospital in Saudi Arabia, 2021. Available: <http://europepmc.org/abstract/PPR/PPR379770>
- Post L, Marogi E, Moss CB, et al. SARS-CoV-2 surveillance in the middle East and North Africa: longitudinal trend analysis. *J Med Internet Res* 2021;23:e25830.
- Al-Rousan N, Al-Najjar H. Is visiting Qom spread CoVID-19 epidemic in the Middle East? *Eur Rev Med Pharmacol Sci* 2020;24:5813–8.
- Tayoun AA, Loney T, Khansaheb H, et al. Multiple early introductions of SARS-CoV-2 into a global travel hub in the Middle East. *Sci Rep* 2020;10:17720.
- Lu L, Lycett S, Ashworth J, et al. What are SARS-CoV-2 genomes from the WHO Africa region member states telling us? *BMJ Glob Health* 2021;6:e004408.
- Otu A, Agogo E, Ebo B. Africa needs more genome sequencing to tackle new variants of SARS-CoV-2. *Nat Med* 2021;27:744–5.
- Oliu-Barton M, Pradelski BSR, Aghion P, et al. SARS-CoV-2 elimination, not mitigation, creates best outcomes for health, the economy, and civil liberties. *Lancet* 2021;397:2234–6.

Countries	Lockdowns/ Curfews		
	Date of began	Date of end	Type of lockdown
1. Gulf area			
Saudi Arabia <sup>1</sup>	March	End of May	Starting partial, then becoming full
United Arab Emirates <sup>2</sup>	March	July	Full
Bahrain	March	May	Partial
Kuwait	March	May	Starting partial, then becoming full
Oman	April	August	Partial
Qatar	March	June	Full
Jordan	March	July, 2021	Starting full, then partial for weekdays and full for the weekends
Iran	March	End of April	Partial, and short-term full lockdown in certain area
2. North African countries			
Algeria	March	July, 2021	Full, then partial
Egypt	March	June	Partial
Morocco	March		
Tunisia	March	June	Starting full, then partial
Sudan	No data		
3. Fragile and conflict-affected countries			
Syria	No data		Partial
Lebanon	March	May	Partial
Yemen	April	July	Partial, and short-term full lockdown in certain area
Iraq	March	No data	No data
Palestine	No data		Partial
Libya	No data		Partial on weekdays, full on weekends
Somalia	No data		
4. Others			

<sup>1</sup> Mohammad Nurunnabi, "The Preventive Strategies of COVID-19 Pandemic in Saudi Arabia.," *Journal of Microbiology, Immunology, and Infection = Wei Mian Yu Gan Ran Za Zhi*, February 2021, <https://doi.org/10.1016/j.jmii.2020.07.023>.

<sup>2</sup> Leila Cheikh Ismail et al., "Impact of the Coronavirus Pandemic (COVID-19) Lockdown on Mental Health and Well-Being in the United Arab Emirates ," *Frontiers in Psychiatry* , 2021, <https://www.frontiersin.org/article/10.3389/fpsyt.2021.633230>.

<sup>3</sup> [New COVID-related Measures In Effect Starting November 20](#)". Overseas Security Advisory Council. Retrieved 9 December 2020.

<sup>4</sup> ["COVID-19 Information"](#). US Embassy in Djibouti. Retrieved 6 May 2020.

Turkey <sup>3</sup>	Nov	March 2021	Partial
Djibouti <sup>4</sup>	March	May	Full lockdown

- Kuwait starting again into partial lockdown on March 2021, to April 2021.
- Oman starting again into partial lockdown July 16-July 31, 2021 including three days of full lockdown (20-22 July, 2021).
- Jordan starting exclude fully vaccinated people from the partial lockdown on June 2021 (Ministry of Health of Jordan).
- Turkey partial lockdown was age-specific lockdown, for individuals age 65 and over, or 20 and below. For other ages, partial lockdown on weekend only .



strain	gisaid_epi_isl	originating_lab	authors
hCoV-19/Iran/Qom-907/2020	EPI_ISL_1014677	National Influenza Center, Virology Department	NZ Shafiei Jandaghi, V Salimi, A Nejati, K Sadeghi, J Yavarian, N Ghavvami, F Ajaminejad and T Mokhtari Azad
hCoV-19/Tunisia/GB1412/2020	EPI_ISL_11172655	Laboratory of Clinical Virology, Institut Pasteur de Tunis	Marwa Khedhiri, Haifa Jmel, Wasfi Fares, Kais Ghedira, Maroua Boujemaa, Yossr Hamdi, Chaïma Hkimi, Nouha Jandoubi, Selim Kamoun, Nadia Khrijj, Nessrine Mezzi, Najah Mighri, Rahma Mkaouer, Houcemmedine Othman, Lilia Romdhane, Ridha Mrad, Amira Jamoussi, Agnes Hamzaoui, Sonia Abdelhak,Henda Triki, Rym Kefi
hCoV-19/Tunisia/GB0406/2020	EPI_ISL_11172656	Laboratory of Clinical Virology, Institut Pasteur de Tunis	Marwa Khedhiri, Haifa Jmel, Wasfi Fares, Kais Ghedira, Maroua Boujemaa, Yossr Hamdi, Chaïma Hkimi, Nouha Jandoubi, Selim Kamoun, Nadia Khrijj, Nessrine Mezzi, Najah Mighri, Rahma Mkaouer, Houcemmedine Othman, Lilia Romdhane, Ridha Mrad, Amira Jamoussi, Agnes Hamzaoui, Sonia Abdelhak,Henda Triki, Rym Kefi
hCoV-19/Tunisia/GB0726/2020	EPI_ISL_11172657	Laboratory of Clinical Virology, Institut Pasteur de Tunis	Marwa Khedhiri, Haifa Jmel, Wasfi Fares, Kais Ghedira, Maroua Boujemaa, Yossr Hamdi, Chaïma Hkimi, Nouha Jandoubi, Selim Kamoun, Nadia Khrijj, Nessrine Mezzi, Najah Mighri, Rahma Mkaouer, Houcemmedine Othman, Lilia Romdhane, Ridha Mrad, Amira Jamoussi, Agnes Hamzaoui, Sonia Abdelhak,Henda Triki, Rym Kefi
hCoV-19/Tunisia/GB0753/2020	EPI_ISL_11172658	Laboratory of Clinical Virology, Institut Pasteur de Tunis	Marwa Khedhiri, Haifa Jmel, Wasfi Fares, Kais Ghedira, Maroua Boujemaa, Yossr Hamdi, Chaïma Hkimi, Nouha Jandoubi, Selim Kamoun, Nadia Khrijj, Nessrine Mezzi, Najah Mighri, Rahma Mkaouer, Houcemmedine Othman, Lilia Romdhane, Ridha Mrad, Amira Jamoussi, Agnes Hamzaoui, Sonia Abdelhak,Henda Triki, Rym Kefi
hCoV-19/Tunisia/GB0757/2020	EPI_ISL_11172659	Laboratory of Clinical Virology, Institut Pasteur de Tunis	Marwa Khedhiri, Haifa Jmel, Wasfi Fares, Kais Ghedira, Maroua Boujemaa, Yossr Hamdi, Chaïma Hkimi, Nouha Jandoubi, Selim Kamoun, Nadia Khrijj, Nessrine Mezzi, Najah Mighri, Rahma Mkaouer, Houcemmedine Othman, Lilia Romdhane, Ridha Mrad, Amira Jamoussi, Agnes Hamzaoui, Sonia Abdelhak,Henda Triki, Rym Kefi
hCoV-19/Tunisia/P1879/2020	EPI_ISL_11172674	Laboratory of Clinical Virology, Institut Pasteur de Tunis	Haifa Jmel, Marwa Khedhiri, Kais Ghedira, Wasfi Fares, Maroua Boujemaa, Yossr Hamdi, Chaïma Hkimi, Nouha Jandoubi, Selim kamoun, Nadia Khrijj, Nessrine Mezzi, Najah Mighri, Rahma Mkaouer, Houcemmedine Othman, Lilia Romdhane, Ridha Mrad, Amira Jamoussi, Agnes Hamzaoui, Sonia Abdelhak,Henda Triki, Rym Kefi
hCoV-19/Tunisia/Q0297/2020	EPI_ISL_11172675	Laboratory of Clinical Virology, Institut Pasteur de Tunis	Haifa Jmel, Marwa Khedhiri, Kais Ghedira, Wasfi Fares, Maroua Boujemaa, Yossr Hamdi, Chaïma Hkimi, Nouha Jandoubi, Selim kamoun, Nadia Khrijj, Nessrine Mezzi, Najah Mighri, Rahma Mkaouer, Houcemmedine Othman, Lilia Romdhane, Ridha Mrad, Amira Jamoussi, Agnes Hamzaoui, Sonia Abdelhak,Henda Triki, Rym Kefi
hCoV-19/Egypt/NRC1-2/2020	EPI_ISL_1273103	Department of Microbial Biotechnology, Genetic Engineering Division, Nation	Dawood,R.M., Khalifa,M.K., Taha,A.G., Farghaly,A., Fikry,A.E. and Shemis,M.
hCoV-19/Egypt/NRC1/2020	EPI_ISL_1315064	Armed Forces Medical Research Laboratories and Blood Bank, Egypt	Reham Dawood, Mohamed Khalifa, Ahmed Taha, Ayman Farghaly, Ahmed Elsayed, Mohamed Shemis
hCoV-19/Egypt/NRC2/2020	EPI_ISL_1315065	Armed Forces Medical Research Laboratories and Blood Bank, Egypt	Reham Dawood, Mohamed Khalifa, Ahmed Taha, Ayman Farghaly, Ahmed Elsayed, Mohamed Shemis
hCoV-19/Iran/Hormozgan/2020	EPI_ISL_1533610	Shiraz University	Abazar Ghorbani, Hakimeh Ahmadi, Hamed Goukiani, Ebrahim Eftekar
hCoV-19/Qatar/QA-QU_01-2/2020	EPI_ISL_1712664	Ministry of Public Health / Hamad Medical Corporation	BRC: Fatima M. Benslimane, Heba A. Al-Khatib, Oal Al-Jamal, Dana Al-Batesh, Hadi M. Yassine, Asmaa A. Al-Thani. MPH and HMC: Abdullatif Al-Khal, Muna A. S. Al-Maslamani, Mashael A. Al-Bader, Hamda Alromailhi, Roberto Bertollini, Peter V. Coyle, Einas A. E. Al-Kuwari, Hamad E. Al-Romailhi, Salih Al-Marri, Mohammed Al-Thani, Reham A. El-Kahlout. QBB: Tasneem Al-Hamad, Dina Elgakhlab QGP: Fatima H. Al-Kuwari, Chadi Saad
hCoV-19/Qatar/QA-QU_02-2-1/2020	EPI_ISL_1712684	Ministry of Public Health / Hamad Medical Corporation	BRC: Fatima M. Benslimane, Heba A. Al-Khatib, Oal Al-Jamal, Dana Al-Batesh, Hadi M. Yassine, Asmaa A. Al-Thani. MPH and HMC: Abdullatif Al-Khal, Muna A. S. Al-Maslamani, Mashael A. Al-Bader, Hamda Alromailhi, Roberto Bertollini, Peter V. Coyle, Einas A. E. Al-Kuwari, Hamad E. Al-Romailhi, Salih Al-Marri, Mohammed Al-Thani, Reham A. El-Kahlout. QBB: Tasneem Al-Hamad, Dina Elgakhlab QGP: Fatima H. Al-Kuwari, Chadi Saad
hCoV-19/Qatar/QA-QU_02-2-18/2020	EPI_ISL_1712686	Ministry of Public Health / Hamad Medical Corporation	BRC: Fatima M. Benslimane, Heba A. Al-Khatib, Oal Al-Jamal, Dana Al-Batesh, Hadi M. Yassine, Asmaa A. Al-Thani. MPH and HMC: Abdullatif Al-Khal, Muna A. S. Al-Maslamani, Mashael A. Al-Bader, Hamda Alromailhi, Roberto Bertollini, Peter V. Coyle, Einas A. E. Al-Kuwari, Hamad E. Al-Romailhi, Salih Al-Marri, Mohammed Al-Thani, Reham A. El-Kahlout. QBB: Tasneem Al-Hamad, Dina Elgakhlab QGP: Fatima H. Al-Kuwari, Chadi Saad
hCoV-19/Qatar/QA-QU_02-2-22/2020	EPI_ISL_1712689	Ministry of Public Health / Hamad Medical Corporation	BRC: Fatima M. Benslimane, Heba A. Al-Khatib, Oal Al-Jamal, Dana Al-Batesh, Hadi M. Yassine, Asmaa A. Al-Thani. MPH and HMC: Abdullatif Al-Khal, Muna A. S. Al-Maslamani, Mashael A. Al-Bader, Hamda Alromailhi, Roberto Bertollini, Peter V. Coyle, Einas A. E. Al-Kuwari, Hamad E. Al-Romailhi, Salih Al-Marri, Mohammed Al-Thani, Reham A. El-Kahlout. QBB: Tasneem Al-Hamad, Dina Elgakhlab QGP: Fatima H. Al-Kuwari, Chadi Saad
hCoV-19/Qatar/QA-QU_02-2-27/2020	EPI_ISL_1712691	Ministry of Public Health / Hamad Medical Corporation	BRC: Fatima M. Benslimane, Heba A. Al-Khatib, Oal Al-Jamal, Dana Al-Batesh, Hadi M. Yassine, Asmaa A. Al-Thani. MPH and HMC: Abdullatif Al-Khal, Muna A. S. Al-Maslamani, Mashael A. Al-Bader, Hamda Alromailhi, Roberto Bertollini, Peter V. Coyle, Einas A. E. Al-Kuwari, Hamad E. Al-Romailhi, Salih Al-Marri, Mohammed Al-Thani, Reham A. El-Kahlout. QBB: Tasneem Al-Hamad, Dina Elgakhlab QGP: Fatima H. Al-Kuwari, Chadi Saad
hCoV-19/Qatar/QA-QU_02-2-29/2020	EPI_ISL_1712692	Ministry of Public Health / Hamad Medical Corporation	BRC: Fatima M. Benslimane, Heba A. Al-Khatib, Oal Al-Jamal, Dana Al-Batesh, Hadi M. Yassine, Asmaa A. Al-Thani. MPH and HMC: Abdullatif Al-Khal, Muna A. S. Al-Maslamani, Mashael A. Al-Bader, Hamda Alromailhi, Roberto Bertollini, Peter V. Coyle, Einas A. E. Al-Kuwari, Hamad E. Al-Romailhi, Salih Al-Marri, Mohammed Al-Thani, Reham A. El-Kahlout. QBB: Tasneem Al-Hamad, Dina Elgakhlab QGP: Fatima H. Al-Kuwari, Chadi Saad
hCoV-19/Qatar/QA-QU_02-2-30/2020	EPI_ISL_1712693	Ministry of Public Health / Hamad Medical Corporation	BRC: Fatima M. Benslimane, Heba A. Al-Khatib, Oal Al-Jamal, Dana Al-Batesh, Hadi M. Yassine, Asmaa A. Al-Thani. MPH and HMC: Abdullatif Al-Khal, Muna A. S. Al-Maslamani, Mashael A. Al-Bader, Hamda Alromailhi, Roberto Bertollini, Peter V. Coyle, Einas A. E. Al-Kuwari, Hamad E. Al-Romailhi, Salih Al-Marri, Mohammed Al-Thani, Reham A. El-Kahlout. QBB: Tasneem Al-Hamad, Dina Elgakhlab QGP: Fatima H. Al-Kuwari, Chadi Saad
hCoV-19/Qatar/QA-QU_02-2-31/2020	EPI_ISL_1712694	Ministry of Public Health / Hamad Medical Corporation	BRC: Fatima M. Benslimane, Heba A. Al-Khatib, Oal Al-Jamal, Dana Al-Batesh, Hadi M. Yassine, Asmaa A. Al-Thani. MPH and HMC: Abdullatif Al-Khal, Muna A. S. Al-Maslamani, Mashael A. Al-Bader, Hamda Alromailhi, Roberto Bertollini, Peter V. Coyle, Einas A. E. Al-Kuwari, Hamad E. Al-Romailhi, Salih Al-Marri, Mohammed Al-Thani, Reham A. El-Kahlout. QBB: Tasneem Al-Hamad, Dina Elgakhlab QGP: Fatima H. Al-Kuwari, Chadi Saad
hCoV-19/Qatar/QA-QU_02-2-35/2020	EPI_ISL_1712695	Ministry of Public Health / Hamad Medical Corporation	BRC: Fatima M. Benslimane, Heba A. Al-Khatib, Oal Al-Jamal, Dana Al-Batesh, Hadi M. Yassine, Asmaa A. Al-Thani. MPH and HMC: Abdullatif Al-Khal, Muna A. S. Al-Maslamani, Mashael A. Al-Bader, Hamda Alromailhi, Roberto Bertollini, Peter V. Coyle, Einas A. E. Al-Kuwari, Hamad E. Al-Romailhi, Salih Al-Marri, Mohammed Al-Thani, Reham A. El-Kahlout. QBB: Tasneem Al-Hamad, Dina Elgakhlab QGP: Fatima H. Al-Kuwari, Chadi Saad
hCoV-19/Qatar/QA-QU_02-2-39/2020	EPI_ISL_1712696	Ministry of Public Health / Hamad Medical Corporation	BRC: Fatima M. Benslimane, Heba A. Al-Khatib, Oal Al-Jamal, Dana Al-Batesh, Hadi M. Yassine, Asmaa A. Al-Thani. MPH and HMC: Abdullatif Al-Khal, Muna A. S. Al-Maslamani, Mashael A. Al-Bader, Hamda Alromailhi, Roberto Bertollini, Peter V. Coyle, Einas A. E. Al-Kuwari, Hamad E. Al-Romailhi, Salih Al-Marri, Mohammed Al-Thani, Reham A. El-Kahlout. QBB: Tasneem Al-Hamad, Dina Elgakhlab QGP: Fatima H. Al-Kuwari, Chadi Saad
hCoV-19/Qatar/QA-QU_02-2-4/2020	EPI_ISL_1712697	Ministry of Public Health / Hamad Medical Corporation	BRC: Fatima M. Benslimane, Heba A. Al-Khatib, Oal Al-Jamal, Dana Al-Batesh, Hadi M. Yassine, Asmaa A. Al-Thani. MPH and HMC: Abdullatif Al-Khal, Muna A. S. Al-Maslamani, Mashael A. Al-Bader, Hamda Alromailhi, Roberto Bertollini, Peter V. Coyle, Einas A. E. Al-Kuwari, Hamad E. Al-Romailhi, Salih Al-Marri, Mohammed Al-Thani, Reham A. El-Kahlout. QBB: Tasneem Al-Hamad, Dina Elgakhlab QGP: Fatima H. Al-Kuwari, Chadi Saad
hCoV-19/Qatar/QA-QU_02-2-40/2020	EPI_ISL_1712698	Ministry of Public Health / Hamad Medical Corporation	BRC: Fatima M. Benslimane, Heba A. Al-Khatib, Oal Al-Jamal, Dana Al-Batesh, Hadi M. Yassine, Asmaa A. Al-Thani. MPH and HMC: Abdullatif Al-Khal, Muna A. S. Al-Maslamani, Mashael A. Al-Bader, Hamda Alromailhi, Roberto Bertollini, Peter V. Coyle, Einas A. E. Al-Kuwari, Hamad E. Al-Romailhi, Salih Al-Marri, Mohammed Al-Thani, Reham A. El-Kahlout. QBB: Tasneem Al-Hamad, Dina Elgakhlab QGP: Fatima H. Al-Kuwari, Chadi Saad
hCoV-19/Qatar/QA-QU_02-2-44/2020	EPI_ISL_1712699	Ministry of Public Health / Hamad Medical Corporation	BRC: Fatima M. Benslimane, Heba A. Al-Khatib, Oal Al-Jamal, Dana Al-Batesh, Hadi M. Yassine, Asmaa A. Al-Thani. MPH and HMC: Abdullatif Al-Khal, Muna A. S. Al-Maslamani, Mashael A. Al-Bader, Hamda Alromailhi, Roberto Bertollini, Peter V. Coyle, Einas A. E. Al-Kuwari, Hamad E. Al-Romailhi, Salih Al-Marri, Mohammed Al-Thani, Reham A. El-Kahlout. QBB: Tasneem Al-Hamad, Dina Elgakhlab QGP: Fatima H. Al-Kuwari, Chadi Saad
hCoV-19/Qatar/QA-QU_02-2-49/2020	EPI_ISL_1712701	Ministry of Public Health / Hamad Medical Corporation	BRC: Fatima M. Benslimane, Heba A. Al-Khatib, Oal Al-Jamal, Dana Al-Batesh, Hadi M. Yassine, Asmaa A. Al-Thani. MPH and HMC: Abdullatif Al-Khal, Muna A. S. Al-Maslamani, Mashael A. Al-Bader, Hamda Alromailhi, Roberto Bertollini, Peter V. Coyle, Einas A. E. Al-Kuwari, Hamad E. Al-Romailhi, Salih Al-Marri, Mohammed Al-Thani, Reham A. El-Kahlout. QBB: Tasneem Al-Hamad, Dina Elgakhlab QGP: Fatima H. Al-Kuwari, Chadi Saad
hCoV-19/Qatar/QA-QU_02-2-5/2020	EPI_ISL_1712702	Ministry of Public Health / Hamad Medical Corporation	BRC: Fatima M. Benslimane, Heba A. Al-Khatib, Oal Al-Jamal, Dana Al-Batesh, Hadi M. Yassine, Asmaa A. Al-Thani. MPH and HMC: Abdullatif Al-Khal, Muna A. S. Al-Maslamani, Mashael A. Al-Bader, Hamda Alromailhi, Roberto Bertollini, Peter V. Coyle, Einas A. E. Al-Kuwari, Hamad E. Al-Romailhi, Salih Al-Marri, Mohammed Al-Thani, Reham A. El-Kahlout. QBB: Tasneem Al-Hamad, Dina Elgakhlab QGP: Fatima H. Al-Kuwari, Chadi Saad
hCoV-19/Qatar/QA-QU_02-2-59/2020	EPI_ISL_1712703	Ministry of Public Health / Hamad Medical Corporation	BRC: Fatima M. Benslimane, Heba A. Al-Khatib, Oal Al-Jamal, Dana Al-Batesh, Hadi M. Yassine, Asmaa A. Al-Thani. MPH and HMC: Abdullatif Al-Khal, Muna A. S. Al-Maslamani, Mashael A. Al-Bader, Hamda Alromailhi, Roberto Bertollini, Peter V. Coyle, Einas A. E. Al-Kuwari, Hamad E. Al-Romailhi, Salih Al-Marri, Mohammed Al-Thani, Reham A. El-Kahlout. QBB: Tasneem Al-Hamad, Dina Elgakhlab QGP: Fatima H. Al-Kuwari, Chadi Saad
hCoV-19/Qatar/QA-QU_02-2-6/2020	EPI_ISL_1712704	Ministry of Public Health / Hamad Medical Corporation	BRC: Fatima M. Benslimane, Heba A. Al-Khatib, Oal Al-Jamal, Dana Al-Batesh, Hadi M. Yassine, Asmaa A. Al-Thani. MPH and HMC: Abdullatif Al-Khal, Muna A. S. Al-Maslamani, Mashael A. Al-Bader, Hamda Alromailhi, Roberto Bertollini, Peter V. Coyle, Einas A. E. Al-Kuwari, Hamad E. Al-Romailhi, Salih Al-Marri, Mohammed Al-Thani, Reham A. El-Kahlout. QBB: Tasneem Al-Hamad, Dina Elgakhlab QGP: Fatima H. Al-Kuwari, Chadi Saad
hCoV-19/Qatar/QA-QU_02-2-60/2020	EPI_ISL_1712705	Ministry of Public Health / Hamad Medical Corporation	BRC: Fatima M. Benslimane, Heba A. Al-Khatib, Oal Al-Jamal, Dana Al-Batesh, Hadi M. Yassine, Asmaa A. Al-Thani. MPH and HMC: Abdullatif Al-Khal, Muna A. S. Al-Maslamani, Mashael A. Al-Bader, Hamda Alromailhi, Roberto Bertollini, Peter V. Coyle, Einas A. E. Al-Kuwari, Hamad E. Al-Romailhi, Salih Al-Marri, Mohammed Al-Thani, Reham A. El-Kahlout. QBB: Tasneem Al-Hamad, Dina Elgakhlab QGP: Fatima H. Al-Kuwari, Chadi Saad

hCoV-19/Qatar/QA-QU_02-2-7/2020	EPI_ISL_1712706	Ministry of Public Health / Hamad Medical Corporation	BRC: Fatiha M. Benslimane, Heba A. Al-Khatib, Oai Al-Jamel, Dana Al-Batesh, Hadi M. Yassine, Asmaa A. Al-Thani. MOPH and HMC: Abdullatif Al-Khal, Muna A. S. Al-Maslamani, Masha'al A. Al-Bader, Hamda Alromaihi, Roberto Bertolini, Peter V. Coyle, Einas A. E. Al-Kuwari, Hamad E. Al-Romaihi, Salih Al-Marri, Mohammed Al-Thani, Reham A. El-Kahlout. QBB: Tasneem Al-Hamad, Dina Elgakhlab. QGP: Fatima H. Al-Kuwari, Chadi Saad
hCoV-19/Qatar/QA-QU_02-2-9/2020	EPI_ISL_1712707	Ministry of Public Health / Hamad Medical Corporation	BRC: Fatiha M. Benslimane, Heba A. Al-Khatib, Oai Al-Jamel, Dana Al-Batesh, Hadi M. Yassine, Asmaa A. Al-Thani. MOPH and HMC: Abdullatif Al-Khal, Muna A. S. Al-Maslamani, Masha'al A. Al-Bader, Hamda Alromaihi, Roberto Bertolini, Peter V. Coyle, Einas A. E. Al-Kuwari, Hamad E. Al-Romaihi, Salih Al-Marri, Mohammed Al-Thani, Reham A. El-Kahlout. QBB: Tasneem Al-Hamad, Dina Elgakhlab. QGP: Fatima H. Al-Kuwari, Chadi Saad
hCoV-19/Turkey/CTF_16032020_001/20	EPI_ISL_2015127	IU-Cerrahpasa, Cerrahpasa School of Medicine, COVID-19 Lab	Mert Kuskucu, Yesim Tuyji Tok, Kenan Midilli
hCoV-19/Turkey/CTF_17032020_002/20	EPI_ISL_2015128	IU-Cerrahpasa, Cerrahpasa School of Medicine, COVID-19 Lab	Mert Kuskucu, Yesim Tuyji Tok, Kenan Midilli
hCoV-19/Turkey/CTF_17032020_003/20	EPI_ISL_2015129	IU-Cerrahpasa, Cerrahpasa School of Medicine, COVID-19 Lab	Mert Kuskucu, Yesim Tuyji Tok, Kenan Midilli
hCoV-19/Somalia/CV1159/2020	EPI_ISL_2107094	National Institute of Health (NIH) - Federal Government of Somalia	Olawoye, I.B., Oluniyi, P.E., Eromon, P.E., Oguzie, J.U., Kayode, A.T., Uwanibe, J.N., Ugwu, C.A., Akano, K.O., Ajogbasile, F.V., Abechi, P.S., Olumade, T.J., Nosamiefan, I., Folarin, O., Hapoli, C.T.
hCoV-19/Somalia/CV1161/2020	EPI_ISL_2107095	National Institute of Health (NIH) - Federal Government of Somalia	Olawoye, I.B., Oluniyi, P.E., Eromon, P.E., Oguzie, J.U., Kayode, A.T., Uwanibe, J.N., Ugwu, C.A., Akano, K.O., Ajogbasile, F.V., Abechi, P.S., Olumade, T.J., Nosamiefan, I., Folarin, O., Hapoli, C.T.
hCoV-19/Somalia/CV1173/2020	EPI_ISL_2107096	National Institute of Health (NIH) - Federal Government of Somalia	Olawoye, I.B., Oluniyi, P.E., Eromon, P.E., Oguzie, J.U., Kayode, A.T., Uwanibe, J.N., Ugwu, C.A., Akano, K.O., Ajogbasile, F.V., Abechi, P.S., Olumade, T.J., Nosamiefan, I., Folarin, O., Hapoli, C.T.
hCoV-19/Somalia/CV1182/2020	EPI_ISL_2107100	National Institute of Health (NIH) - Federal Government of Somalia	Olawoye, I.B., Oluniyi, P.E., Eromon, P.E., Oguzie, J.U., Kayode, A.T., Uwanibe, J.N., Ugwu, C.A., Akano, K.O., Ajogbasile, F.V., Abechi, P.S., Olumade, T.J., Nosamiefan, I., Folarin, O., Hapoli, C.T.
hCoV-19/Somalia/CV1185/2020	EPI_ISL_2107101	National Institute of Health (NIH) - Federal Government of Somalia	Olawoye, I.B., Oluniyi, P.E., Eromon, P.E., Oguzie, J.U., Kayode, A.T., Uwanibe, J.N., Ugwu, C.A., Akano, K.O., Ajogbasile, F.V., Abechi, P.S., Olumade, T.J., Nosamiefan, I., Folarin, O., Hapoli, C.T.
hCoV-19/Egypt/NRC-5159/2020	EPI_ISL_2232407	Center of Scientific Excellence for Influenza Viruses (CSEV), National Research	Rabeh El-Shesheny, Ahmed E Kayed, Ahmed El-Taweel, Mokhtar Goma'a, Sara Mahmoud, Yassin Moatasim, Omnia Kutkat, Mina Kamel, Noura M Abo Shama, Mohamed El Sayes, Mahmoud Shehata, Ahmed Mostafa, Ahmed Kandeil, Richard Webby, Ghazi Kayali, Mohamed Ahmed Ali
hCoV-19/Somalia/CV1232/2020	EPI_ISL_2308255	National Institute of Health (NIH) - Federal Government of Somalia	Olawoye, I.B., Oluniyi, P.E., Eromon, P.E., Oguzie, J.U., Kayode, A.T., Uwanibe, J.N., Ugwu, C.A., Akano, K.O., Ajogbasile, F.V., Abechi, P.S., Olumade, T.J., Nosamiefan, I., Folarin, O., Hapoli, C.T.
hCoV-19/Somalia/CV1236/2020	EPI_ISL_2308257	National Institute of Health (NIH) - Federal Government of Somalia	Olawoye, I.B., Oluniyi, P.E., Eromon, P.E., Oguzie, J.U., Kayode, A.T., Uwanibe, J.N., Ugwu, C.A., Akano, K.O., Ajogbasile, F.V., Abechi, P.S., Olumade, T.J., Nosamiefan, I., Folarin, O., Hapoli, C.T.
hCoV-19/Iraq/HTH20210602_111/2020	EPI_ISL_2383317	The teaching Baghdad hospital	Abdulhusein Thaeir, Fadhi Hula
hCoV-19/Iran/GRC-60/2020	EPI_ISL_2693675	Department of Molecular Diagnostic, Emam Ali Educational and Therapeutic	Zohreh Fattahi, Marzieh Mohseni, Khadijeh Jalaivand, Azam Ghaziasadi, Seydeh elham Mortazavi, Ali Jafarpour, Zakiye Mokhames Mokhames, Alireza Soleimani, Kimia Kahrizi, Seyed Mohammad Jazayeri, Hossein Najmabadi.
hCoV-19/Iran/GRC-89/2020	EPI_ISL_2693907	Infectious Diseases Research Center, Birjand University of Medical Sciences, B	Zohreh Fattahi, Marzieh Mohseni, Khadijeh Jalaivand, Azam Ghaziasadi, Seydeh elham Mortazavi, Ali Jafarpour, Shokoh Ghafari, Masood Ziaee, Kimia Kahrizi, Seyed Mohammad Jazayeri, Hossein Najmabadi.
hCoV-19/Iran/GRC-3/2020	EPI_ISL_2693908	Department of Infectious Disease, School of Medicine, Sina Hospital, Tehran	Zohreh Fattahi, Marzieh Mohseni, Khadijeh Jalaivand, Jila Yavarian, Kimia Kahrizi, Talat Mokhtari-Azad, Hossein Najmabadi.
hCoV-19/Iran/GRC-4/2020	EPI_ISL_2693972	Virology Centre, School of public health, Tehran University of Medical Science	Zohreh Fattahi, Marzieh Mohseni, Khadijeh Jalaivand, Jila Yavarian, Kimia Kahrizi, Talat Mokhtari-Azad, Hossein Najmabadi.
hCoV-19/Iran/GRC-5/2020	EPI_ISL_2694195	Virology Centre, School of public health, Tehran University of Medical Science	Zohreh Fattahi, Marzieh Mohseni, Khadijeh Jalaivand, Jila Yavarian, Kimia Kahrizi, Talat Mokhtari-Azad, Hossein Najmabadi.
hCoV-19/Iran/GRC-6/2020	EPI_ISL_2694587	Virology Centre, School of public health, Tehran University of Medical Science	Zohreh Fattahi, Marzieh Mohseni, Khadijeh Jalaivand, Jila Yavarian, Kimia Kahrizi, Talat Mokhtari-Azad, Hossein Najmabadi.
hCoV-19/Djibouti/CNSS00103-IHU10312	EPI_ISL_2820509	Laboratoire de Diagnostic, Centre de Soins 1, Caisse Nationale de SviDcuritvC	Ikr'am Omar Osman; Anthony Levasseur; Ludvine Brechar; Iman Abdillahi Hassan; Idil Salah abdillahi; Zeinab Ali Waberi; Jeremy Delerac; Linda Houhamdi; Pierre-Edouard Fournier; Philippe Colson; Mohamed Houmed Aboubaker; Didier Raoult; Christian A. Devaux.
hCoV-19/Djibouti/CNSS00115-IHU10312	EPI_ISL_2820514	Laboratoire de Diagnostic, Centre de Soins 1, Caisse Nationale de SviDcuritvC	Ikr'am Omar Osman; Anthony Levasseur; Ludvine Brechar; Iman Abdillahi Hassan; Idil Salah abdillahi; Zeinab Ali Waberi; Jeremy Delerac; Linda Houhamdi; Pierre-Edouard Fournier; Philippe Colson; Mohamed Houmed Aboubaker; Didier Raoult; Christian A. Devaux.
hCoV-19/Djibouti/CNSS00187-IHU10312	EPI_ISL_2820520	Laboratoire de Diagnostic, Centre de Soins 1, Caisse Nationale de SviDcuritvC	Ikr'am Omar Osman; Anthony Levasseur; Ludvine Brechar; Iman Abdillahi Hassan; Idil Salah abdillahi; Zeinab Ali Waberi; Jeremy Delerac; Linda Houhamdi; Pierre-Edouard Fournier; Philippe Colson; Mohamed Houmed Aboubaker; Didier Raoult; Christian A. Devaux.
hCoV-19/Djibouti/CNSS00326-IHU10312	EPI_ISL_2820547	Laboratoire de Diagnostic, Centre de Soins 1, Caisse Nationale de SviDcuritvC	Ikr'am Omar Osman; Anthony Levasseur; Ludvine Brechar; Iman Abdillahi Hassan; Idil Salah abdillahi; Zeinab Ali Waberi; Jeremy Delerac; Linda Houhamdi; Pierre-Edouard Fournier; Philippe Colson; Mohamed Houmed Aboubaker; Didier Raoult; Christian A. Devaux.
hCoV-19/Djibouti/CNSS00388-IHU10312	EPI_ISL_2820621	Laboratoire de Diagnostic, Centre de Soins 1, Caisse Nationale de SviDcuritvC	Ikr'am Omar Osman; Anthony Levasseur; Ludvine Brechar; Iman Abdillahi Hassan; Idil Salah abdillahi; Zeinab Ali Waberi; Jeremy Delerac; Linda Houhamdi; Pierre-Edouard Fournier; Philippe Colson; Mohamed Houmed Aboubaker; Didier Raoult; Christian A. Devaux.
hCoV-19/Djibouti/CNSS00390-IHU10312	EPI_ISL_2820626	Laboratoire de Diagnostic, Centre de Soins 1, Caisse Nationale de SviDcuritvC	Ikr'am Omar Osman; Anthony Levasseur; Ludvine Brechar; Iman Abdillahi Hassan; Idil Salah abdillahi; Zeinab Ali Waberi; Jeremy Delerac; Linda Houhamdi; Pierre-Edouard Fournier; Philippe Colson; Mohamed Houmed Aboubaker; Didier Raoult; Christian A. Devaux.
hCoV-19/Djibouti/CNSS00182-IHU10312	EPI_ISL_2820756	Laboratoire de Diagnostic, Centre de Soins 1, Caisse Nationale de SviDcuritvC	Ikr'am Omar Osman; Anthony Levasseur; Ludvine Brechar; Iman Abdillahi Hassan; Idil Salah abdillahi; Zeinab Ali Waberi; Jeremy Delerac; Linda Houhamdi; Pierre-Edouard Fournier; Philippe Colson; Mohamed Houmed Aboubaker; Didier Raoult; Christian A. Devaux.
hCoV-19/Djibouti/CNSS00206-IHU10312	EPI_ISL_2820757	Laboratoire de Diagnostic, Centre de Soins 1, Caisse Nationale de SviDcuritvC	Ikr'am Omar Osman; Anthony Levasseur; Ludvine Brechar; Iman Abdillahi Hassan; Idil Salah abdillahi; Zeinab Ali Waberi; Jeremy Delerac; Linda Houhamdi; Pierre-Edouard Fournier; Philippe Colson; Mohamed Houmed Aboubaker; Didier Raoult; Christian A. Devaux.
hCoV-19/Djibouti/NAMRU3_A08/2020	EPI_ISL_2860827	Naval Medical Research Unit No. 3	Catherine E. Arnold, Regina Z. Cer, Logan J. Voegtly, Kyle A. Long, Bishwo N. Adhikari, Emily K. Stefanov, Andrew J. Bennett, Andrea E. Luquette, Francisco Malagon, Luis A. Estrella, Michael V. Deschenes, Chaselynn M. Watters, Stephen M. Eggan, and Kimberly A. Bishop-Lilly
hCoV-19/Djibouti/NAMRU3_A09/2020	EPI_ISL_2860828	Naval Medical Research Unit No. 3	Catherine E. Arnold, Regina Z. Cer, Logan J. Voegtly, Kyle A. Long, Bishwo N. Adhikari, Emily K. Stefanov, Andrew J. Bennett, Andrea E. Luquette, Francisco Malagon, Luis A. Estrella, Michael V. Deschenes, Chaselynn M. Watters, Stephen M. Eggan, and Kimberly A. Bishop-Lilly
hCoV-19/Djibouti/NAMRU3_A10/2020	EPI_ISL_2860829	Naval Medical Research Unit No. 3	Catherine E. Arnold, Regina Z. Cer, Logan J. Voegtly, Kyle A. Long, Bishwo N. Adhikari, Emily K. Stefanov, Andrew J. Bennett, Andrea E. Luquette, Francisco Malagon, Luis A. Estrella, Michael V. Deschenes, Chaselynn M. Watters, Stephen M. Eggan, and Kimberly A. Bishop-Lilly
hCoV-19/Djibouti/NAMRU3_A11/2020	EPI_ISL_2860830	Naval Medical Research Unit No. 3	Catherine E. Arnold, Regina Z. Cer, Logan J. Voegtly, Kyle A. Long, Bishwo N. Adhikari, Emily K. Stefanov, Andrew J. Bennett, Andrea E. Luquette, Francisco Malagon, Luis A. Estrella, Michael V. Deschenes, Chaselynn M. Watters, Stephen M. Eggan, and Kimberly A. Bishop-Lilly
hCoV-19/Djibouti/NAMRU3_A14/2020	EPI_ISL_2860831	Naval Medical Research Unit No. 3	Catherine E. Arnold, Regina Z. Cer, Logan J. Voegtly, Kyle A. Long, Bishwo N. Adhikari, Emily K. Stefanov, Andrew J. Bennett, Andrea E. Luquette, Francisco Malagon, Luis A. Estrella, Michael V. Deschenes, Chaselynn M. Watters, Stephen M. Eggan, and Kimberly A. Bishop-Lilly
hCoV-19/Djibouti/NAMRU3_A19/2020	EPI_ISL_2860832	Naval Medical Research Unit No. 3	Catherine E. Arnold, Regina Z. Cer, Logan J. Voegtly, Kyle A. Long, Bishwo N. Adhikari, Emily K. Stefanov, Andrew J. Bennett, Andrea E. Luquette, Francisco Malagon, Luis A. Estrella, Michael V. Deschenes, Chaselynn M. Watters, Stephen M. Eggan, and Kimberly A. Bishop-Lilly
hCoV-19/Djibouti/NAMRU3_A21/2020	EPI_ISL_2860833	Naval Medical Research Unit No. 3	Catherine E. Arnold, Regina Z. Cer, Logan J. Voegtly, Kyle A. Long, Bishwo N. Adhikari, Emily K. Stefanov, Andrew J. Bennett, Andrea E. Luquette, Francisco Malagon, Luis A. Estrella, Michael V. Deschenes, Chaselynn M. Watters, Stephen M. Eggan, and Kimberly A. Bishop-Lilly
hCoV-19/Djibouti/NAMRU3_A71/2020	EPI_ISL_2860834	Naval Medical Research Unit No. 3	Catherine E. Arnold, Regina Z. Cer, Logan J. Voegtly, Kyle A. Long, Bishwo N. Adhikari, Emily K. Stefanov, Andrew J. Bennett, Andrea E. Luquette, Francisco Malagon, Luis A. Estrella, Michael V. Deschenes, Chaselynn M. Watters, Stephen M. Eggan, and Kimberly A. Bishop-Lilly
hCoV-19/Djibouti/NAMRU3_DZ10/2020	EPI_ISL_2860889	Naval Medical Research Unit No. 3	Catherine E. Arnold, Regina Z. Cer, Logan J. Voegtly, Kyle A. Long, Bishwo N. Adhikari, Emily K. Stefanov, Andrew J. Bennett, Andrea E. Luquette, Francisco Malagon, Luis A. Estrella, Michael V. Deschenes, Chaselynn M. Watters, Stephen M. Eggan, and Kimberly A. Bishop-Lilly
hCoV-19/SouthSudan/UGS78/2020	EPI_ISL_2928025	South Sudan Ministry of Health, WHO South Sudan, MRC/UVRI & LSHTM Ug	Joseph Francis Wamala, Abe G. Abias, Dennis Kemy Lodogino, Sudhir Bunga, James Ayel, Lu Lojok Deng, Richard Lino Loro Lako, John Rununu, Juma John HM, Dan Lule Bugembe, Pontiano Kaleebu, Matthew Cotten, My V.T. Phan
hCoV-19/Iraq/Hula-02/2020	EPI_ISL_3402237	Baghdad Teaching Hospital	Thaeir,A.A. and Hula,F.Y.

hCoV-19/Djibouti/NAMRU3_A04/2020	EPI_ISL_3845307	Naval Medical Research Unit No. 3	Catherine E. Arnold, Regina Z. Cer, Logan J. Voegtly, Kyle A. Long, Emily K. Stefanov, Andrew J. Bennett, Andrea E. Luquette, Robin H. Miller, Francisco Malagon, Luis A. Estrella, Lindsay A. Glang, Michael V. Deschenes, Chaselynn M. Watters, Stephen M. Eggan, and Kimberly A. Bishop-Lilly
hCoV-19/Djibouti/NAMRU3_A06/2020	EPI_ISL_3845310	Naval Medical Research Unit No. 3	Catherine E. Arnold, Regina Z. Cer, Logan J. Voegtly, Kyle A. Long, Emily K. Stefanov, Andrew J. Bennett, Andrea E. Luquette, Robin H. Miller, Francisco Malagon, Luis A. Estrella, Lindsay A. Glang, Michael V. Deschenes, Chaselynn M. Watters, Stephen M. Eggan, and Kimberly A. Bishop-Lilly
hCoV-19/Djibouti/NAMRU3_A07/2020	EPI_ISL_3845313	Naval Medical Research Unit No. 3	Catherine E. Arnold, Regina Z. Cer, Logan J. Voegtly, Kyle A. Long, Emily K. Stefanov, Andrew J. Bennett, Andrea E. Luquette, Robin H. Miller, Francisco Malagon, Luis A. Estrella, Lindsay A. Glang, Michael V. Deschenes, Chaselynn M. Watters, Stephen M. Eggan, and Kimberly A. Bishop-Lilly
hCoV-19/Djibouti/NAMRU3_A25/2020	EPI_ISL_3845316	Naval Medical Research Unit No. 3	Catherine E. Arnold, Regina Z. Cer, Logan J. Voegtly, Kyle A. Long, Emily K. Stefanov, Andrew J. Bennett, Andrea E. Luquette, Robin H. Miller, Francisco Malagon, Luis A. Estrella, Lindsay A. Glang, Michael V. Deschenes, Chaselynn M. Watters, Stephen M. Eggan, and Kimberly A. Bishop-Lilly
hCoV-19/Djibouti/NAMRU3_C25/2020	EPI_ISL_3845345	Naval Medical Research Unit No. 3	Catherine E. Arnold, Regina Z. Cer, Logan J. Voegtly, Kyle A. Long, Emily K. Stefanov, Andrew J. Bennett, Andrea E. Luquette, Robin H. Miller, Francisco Malagon, Luis A. Estrella, Lindsay A. Glang, Michael V. Deschenes, Chaselynn M. Watters, Stephen M. Eggan, and Kimberly A. Bishop-Lilly
hCoV-19/Djibouti/NAMRU3_C28/2020	EPI_ISL_3845348	Naval Medical Research Unit No. 3	Catherine E. Arnold, Regina Z. Cer, Logan J. Voegtly, Kyle A. Long, Emily K. Stefanov, Andrew J. Bennett, Andrea E. Luquette, Robin H. Miller, Francisco Malagon, Luis A. Estrella, Lindsay A. Glang, Michael V. Deschenes, Chaselynn M. Watters, Stephen M. Eggan, and Kimberly A. Bishop-Lilly
hCoV-19/Djibouti/NAMRU3_C49/2020	EPI_ISL_3845350	Naval Medical Research Unit No. 3	Catherine E. Arnold, Regina Z. Cer, Logan J. Voegtly, Kyle A. Long, Emily K. Stefanov, Andrew J. Bennett, Andrea E. Luquette, Robin H. Miller, Francisco Malagon, Luis A. Estrella, Lindsay A. Glang, Michael V. Deschenes, Chaselynn M. Watters, Stephen M. Eggan, and Kimberly A. Bishop-Lilly
hCoV-19/Djibouti/NAMRU3_CL1/2020	EPI_ISL_3845355	Naval Medical Research Unit No. 3	Catherine E. Arnold, Regina Z. Cer, Logan J. Voegtly, Kyle A. Long, Emily K. Stefanov, Andrew J. Bennett, Andrea E. Luquette, Robin H. Miller, Francisco Malagon, Luis A. Estrella, Lindsay A. Glang, Michael V. Deschenes, Chaselynn M. Watters, Stephen M. Eggan, and Kimberly A. Bishop-Lilly
hCoV-19/Djibouti/NAMRU3_CL2/2020	EPI_ISL_3845359	Naval Medical Research Unit No. 3	Catherine E. Arnold, Regina Z. Cer, Logan J. Voegtly, Kyle A. Long, Emily K. Stefanov, Andrew J. Bennett, Andrea E. Luquette, Robin H. Miller, Francisco Malagon, Luis A. Estrella, Lindsay A. Glang, Michael V. Deschenes, Chaselynn M. Watters, Stephen M. Eggan, and Kimberly A. Bishop-Lilly
hCoV-19/Djibouti/NAMRU3_CL5/2020	EPI_ISL_3845360	Naval Medical Research Unit No. 3	Catherine E. Arnold, Regina Z. Cer, Logan J. Voegtly, Kyle A. Long, Emily K. Stefanov, Andrew J. Bennett, Andrea E. Luquette, Robin H. Miller, Francisco Malagon, Luis A. Estrella, Lindsay A. Glang, Michael V. Deschenes, Chaselynn M. Watters, Stephen M. Eggan, and Kimberly A. Bishop-Lilly
hCoV-19/Djibouti/NAMRU3_D12/2020	EPI_ISL_3845362	Naval Medical Research Unit No. 3	Catherine E. Arnold, Regina Z. Cer, Logan J. Voegtly, Kyle A. Long, Emily K. Stefanov, Andrew J. Bennett, Andrea E. Luquette, Robin H. Miller, Francisco Malagon, Luis A. Estrella, Lindsay A. Glang, Michael V. Deschenes, Chaselynn M. Watters, Stephen M. Eggan, and Kimberly A. Bishop-Lilly
hCoV-19/Djibouti/NAMRU3_E19/2020	EPI_ISL_3845369	Naval Medical Research Unit No. 3	Catherine E. Arnold, Regina Z. Cer, Logan J. Voegtly, Kyle A. Long, Emily K. Stefanov, Andrew J. Bennett, Andrea E. Luquette, Robin H. Miller, Francisco Malagon, Luis A. Estrella, Lindsay A. Glang, Michael V. Deschenes, Chaselynn M. Watters, Stephen M. Eggan, and Kimberly A. Bishop-Lilly
hCoV-19/Djibouti/NAMRU3_HS/2020	EPI_ISL_3845395	Naval Medical Research Unit No. 3	Catherine E. Arnold, Regina Z. Cer, Logan J. Voegtly, Kyle A. Long, Emily K. Stefanov, Andrew J. Bennett, Andrea E. Luquette, Robin H. Miller, Francisco Malagon, Luis A. Estrella, Lindsay A. Glang, Michael V. Deschenes, Chaselynn M. Watters, Stephen M. Eggan, and Kimberly A. Bishop-Lilly
hCoV-19/Djibouti/NAMRU3_KH/2020	EPI_ISL_3845401	Naval Medical Research Unit No. 3	Catherine E. Arnold, Regina Z. Cer, Logan J. Voegtly, Kyle A. Long, Emily K. Stefanov, Andrew J. Bennett, Andrea E. Luquette, Robin H. Miller, Francisco Malagon, Luis A. Estrella, Lindsay A. Glang, Michael V. Deschenes, Chaselynn M. Watters, Stephen M. Eggan, and Kimberly A. Bishop-Lilly
hCoV-19/Djibouti/NAMRU3_E06/2020	EPI_ISL_3920432	Naval Medical Research Unit No. 3	Catherine E. Arnold, Regina Z. Cer, Logan J. Voegtly, Kyle A. Long, Emily K. Stefanov, Andrew J. Bennett, Andrea E. Luquette, Robin H. Miller, Francisco Malagon, Luis A. Estrella, Lindsay A. Glang, Michael V. Deschenes, Chaselynn M. Watters, Stephen M. Eggan, and Kimberly A. Bishop-Lilly
hCoV-19/Djibouti/NAMRU3_E106/2020	EPI_ISL_3920433	Naval Medical Research Unit No. 3	Catherine E. Arnold, Regina Z. Cer, Logan J. Voegtly, Kyle A. Long, Emily K. Stefanov, Andrew J. Bennett, Andrea E. Luquette, Robin H. Miller, Francisco Malagon, Luis A. Estrella, Lindsay A. Glang, Michael V. Deschenes, Chaselynn M. Watters, Stephen M. Eggan, and Kimberly A. Bishop-Lilly
hCoV-19/Djibouti/NAMRU3_G19/2020	EPI_ISL_3920434	Naval Medical Research Unit No. 3	Catherine E. Arnold, Regina Z. Cer, Logan J. Voegtly, Kyle A. Long, Emily K. Stefanov, Andrew J. Bennett, Andrea E. Luquette, Robin H. Miller, Francisco Malagon, Luis A. Estrella, Lindsay A. Glang, Michael V. Deschenes, Chaselynn M. Watters, Stephen M. Eggan, and Kimberly A. Bishop-Lilly
hCoV-19/Wuhan/Hu-1/2019	EPI_ISL_402125	National Institute for Communicable Disease Control and Prevention (ICDC) of China	Zhang,Y.-Z., Wu,F., Chen,Y.-M., Pei,Y.-Y., Xu,L., Wang,W., Zhao,S., Yu,B., Hu,Y., Tao,Z.-W., Song,Z.-G., Tian,J.-H., Zhang,Y.-L., Liu,Y., Zheng,J.-J., Dai,F.-H., Wang,Q.-M., She,J.-L. and Zhu,T.-Y.
hCoV-19/Wuhan/WH01/2019	EPI_ISL_406798	General Hospital of Central Theater Command of People's Liberation Army of China	Weijun Chen, Yuhai Bi, Weifeng Shi and Zhenhong Hu
hCoV-19/SaudiArabia/CV1249/2020	EPI_ISL_416030	Public Health Laboratory- Saudi CDC	Public Health Laboratory- Saudi CDC
hCoV-19/SaudiArabia/KAIMRC-Alghoribi	EPI_ISL_416432	Clinical Microbiology Lab	Majed Alghoribi, Sadeem Alhaili, Abdulrahman Alswaij, Ullane Okdah, Sameera Al Johani, Michel Doumth
hCoV-19/Kuwait/KU12/2020	EPI_ISL_416458	Virology laboratory Ministry of Health Kuwait sequenced at Dasman Diabetes Institute	Fahd Al-Mulla, Sumi John, Sara Alqabandi, Rasheeba Iqbal, Motasem Melhem, Ebaa AlOzairi, Qais Al-Duwairi
hCoV-19/SaudiArabia/SCDC-3321/2020	EPI_ISL_416521	Public Health Laboratory	Albarrag, A
hCoV-19/SaudiArabia/SCDC-3324/2020	EPI_ISL_416522	Public Health Laboratory, Saudi CDC	Albarrag,A
hCoV-19/Kuwait/KU09/2020	EPI_ISL_416541	Dasman Diabetes Institute and Virology Laboratory Ministry of Health	Fahd Al-Mulla, Sumi John, Rasheeba Iqbal, Motasem Melhem, Ebaa AlOzairi, Sara Al-Qabandi, Qais Al-Duwairi
hCoV-19/Kuwait/KU17/2020	EPI_ISL_416542	Dasman Diabetes Institute	Fahd Al-Mulla, Sumi John, Rasheeba Iqbal, Motasem Melhem, Ebaa AlOzairi, Sara Al-Qabandi, Qais Al-Duwairi
hCoV-19/Kuwait/KU18/2020	EPI_ISL_416543	Dasman Diabetes Institute	Fahd Al-Mulla, Rasheeba Iqbal, Sumi John, Motasem Melhem, Ebaa AlOzairi, Sara Al-Qabandi, Qais Al-Duwairi
hCoV-19/Algeria/G0638_2264/2020	EPI_ISL_418241	NIC Viral Respiratory Unit - Institut Pasteur of Algeria	MV@lanie Albert, Marion Barbet, Sylvie Behillil, MV@line Bizard, Angela Brisebarre, Flora Donati, Etienne Simon-Lorin@re, Vincent Enouf, Maud Vanpeene, Sylvie van der Werf, Fawzi Derrar
hCoV-19/Algeria/G0640_2265/2020	EPI_ISL_418242	NIC Viral Respiratory Unit - Institut Pasteur of Algeria	MV@lanie Albert, Marion Barbet, Sylvie Behillil, MV@line Bizard, Angela Brisebarre, Flora Donati, Etienne Simon-Lorin@re, Vincent Enouf, Maud Vanpeene, Sylvie van der Werf, Fawzi Derrar
hCoV-19/Algeria/G0860_2262/2020	EPI_ISL_420037	NIC Viral Respiratory Unit - Institut Pasteur of Algeria	MV@lanie Albert, Marion Barbet, Sylvie Behillil, MV@line Bizard, Angela Brisebarre, Flora Donati, Etienne Simon-Lorin@re, Vincent Enouf, Maud Vanpeene, Sylvie van der Werf, Fawzi Derrar
hCoV-19/Kuwait/KU006/2020	EPI_ISL_422424	Jaber Al Ahmad Al Sabah Hospital	Fahd Al-Mulla, Rasheeba Iqbal, Sumi John, Ebaa Al-Ozairi, Qais Al-Duwairi
hCoV-19/Kuwait/KU005/2020	EPI_ISL_422426	JABER AL AHMAD AL SABAH HOSPITAL ,AI KUWAIT CITY	Fahd Al-Mulla, Rasheeba Iqbal, Sumi John, Ebaa Al-Ozairi, Qais Al-Duwairi
hCoV-19/Kuwait/KU008/2020	EPI_ISL_422427	JABER AL AHMAD AL SABAH HOSPITAL ,AI KUWAIT CITY	Fahd Al-Mulla, Rasheeba Iqbal, Sumi John, Ebaa Al-Ozairi, Qais Al-Duwairi
hCoV-19/Turkey/ERAGEM-001/2020	EPI_ISL_424366	Vaccine Research, Development and Application Center, Erciyes University	Shaikh Terkis Islam Pavel, Hazei Yetiskin, Gunsu Aydin, Can Holeyevkin, Muhammet Ali Uygut, Zehra B Dursun, f=ilhami Celik, Alper Iseri, Aykut Ozderendeli
hCoV-19/Turkey/HSGM-4706/2020	EPI_ISL_428712	Ministry of Health Turkey	Fatma Bayraktar,Ay@ie Ba=iaak Alta=ü,Yasemin Co=ügun,GV@lay Korukluöfülü,SelviBuk K@fifev@
hCoV-19/Turkey/HSGM-5516/2020	EPI_ISL_428713	Ministry of Health Turkey	Fatma Bayraktar,Ay@ie Ba=iaak Alta=ü,Yasemin Co=ügun,GV@lay Korukluöfülü,SelviBuk K@fifev@
hCoV-19/Turkey/HSGM-5602/2020	EPI_ISL_428714	Ministry of Health Turkey	Fatma Bayraktar,Ay@ie Ba=iaak Alta=ü,Yasemin Co=ügun,GV@lay Korukluöfülü,SelviBuk K@fifev@
hCoV-19/Turkey/HSGM-5624/2020	EPI_ISL_428715	Ministry of Health Turkey	Fatma Bayraktar,Ay@ie Ba=iaak Alta=ü,Yasemin Co=ügun,GV@lay Korukluöfülü,SelviBuk K@fifev@
hCoV-19/Turkey/HSGM-5711/2020	EPI_ISL_428716	Ministry of Health Turkey	Fatma Bayraktar,Ay@ie Ba=iaak Alta=ü,Yasemin Co=ügun,GV@lay Korukluöfülü,SelviBuk K@fifev@
hCoV-19/Turkey/HSGM-5769/2020	EPI_ISL_428717	Ministry of Health Turkey	Fatma Bayraktar,Ay@ie Ba=iaak Alta=ü,Yasemin Co=ügun,GV@lay Korukluöfülü,SelviBuk K@fifev@
hCoV-19/Turkey/HSGM-8992/2020	EPI_ISL_429865	Ministry of Health Turkey	Fatma Bayraktar,Ay@ie Ba=iaak Alta=ü,Yasemin Co=ügun,GV@lay Korukluöfülü,SelviBuk K@fifev@
hCoV-19/Turkey/HSGM-4236/2020	EPI_ISL_429866	Ministry of Health Turkey	Fatma Bayraktar,Ay@ie Ba=iaak Alta=ü,Yasemin Co=ügun,GV@lay Korukluöfülü,SelviBuk K@fifev@
hCoV-19/Turkey/HSGM-4505/2020	EPI_ISL_429867	Ministry of Health Turkey	Fatma Bayraktar,Ay@ie Ba=iaak Alta=ü,Yasemin Co=ügun,GV@lay Korukluöfülü,SelviBuk K@fifev@
hCoV-19/Turkey/HSGM-4598/2020	EPI_ISL_429868	Ministry of Health Turkey	Fatma Bayraktar,Ay@ie Ba=iaak Alta=ü,Yasemin Co=ügun,GV@lay Korukluöfülü,SelviBuk K@fifev@
hCoV-19/Turkey/HSGM-4701/2020	EPI_ISL_429869	Ministry of Health Turkey	Fatma Bayraktar,Ay@ie Ba=iaak Alta=ü,Yasemin Co=ügun,GV@lay Korukluöfülü,SelviBuk K@fifev@
hCoV-19/Jordan/SR-032/2020	EPI_ISL_429992	Biolab Diagnostic Laboratories	Issa Abu-Dayyeh, Ahmad Tibi, Lama Hussein, Lina Mohammad, Zein Naber, Amid Abdelnour with SEARCH Alliance San Diego

hCoV-19/Jordan/SR-033/2020	EPI_ISL_429993	Biolab Diagnostic Laboratories	Issa Abu-Dayyeh, Ahmad Tibi, Lama Hussein, Line Mohammad, Zein Naber, Amid Abdelnour with SEARCH Alliance San Diego
hCoV-19/Jordan/SR-034/2020	EPI_ISL_429994	Biolab Diagnostic Laboratories	Issa Abu-Dayyeh, Ahmad Tibi, Lama Hussein, Line Mohammad, Zein Naber, Amid Abdelnour with SEARCH Alliance San Diego
hCoV-19/Jordan/SR-036/2020	EPI_ISL_429996	Biolab Diagnostic Laboratories	Issa Abu-Dayyeh, Ahmad Tibi, Lama Hussein, Line Mohammad, Zein Naber, Amid Abdelnour with SEARCH Alliance San Diego
hCoV-19/Jordan/SR-037/2020	EPI_ISL_429997	Biolab Diagnostic Laboratories	Issa Abu-Dayyeh, Ahmad Tibi, Lama Hussein, Line Mohammad, Zein Naber, Amid Abdelnour with SEARCH Alliance San Diego
hCoV-19/Jordan/SR-039/2020	EPI_ISL_429998	Biolab Diagnostic Laboratories	Issa Abu-Dayyeh, Ahmad Tibi, Lama Hussein, Line Mohammad, Zein Naber, Amid Abdelnour with SEARCH Alliance San Diego
hCoV-19/Jordan/SR-041/2020	EPI_ISL_429999	Biolab Diagnostic Laboratories	Issa Abu-Dayyeh, Ahmad Tibi, Lama Hussein, Line Mohammad, Zein Naber, Amid Abdelnour with SEARCH Alliance San Diego
hCoV-19/Jordan/SR-043/2020	EPI_ISL_430001	Biolab Diagnostic Laboratories	Issa Abu-Dayyeh, Ahmad Tibi, Lama Hussein, Line Mohammad, Zein Naber, Amid Abdelnour with SEARCH Alliance San Diego
hCoV-19/Jordan/SR-044/2020	EPI_ISL_430002	Biolab Diagnostic Laboratories	Issa Abu-Dayyeh, Ahmad Tibi, Lama Hussein, Line Mohammad, Zein Naber, Amid Abdelnour with SEARCH Alliance San Diego
hCoV-19/Jordan/SR-045/2020	EPI_ISL_430003	Biolab Diagnostic Laboratories	Issa Abu-Dayyeh, Ahmad Tibi, Lama Hussein, Line Mohammad, Zein Naber, Amid Abdelnour with SEARCH Alliance San Diego
hCoV-19/Jordan/SR-046/2020	EPI_ISL_430004	Biolab Diagnostic Laboratories	Issa Abu-Dayyeh, Ahmad Tibi, Lama Hussein, Line Mohammad, Zein Naber, Amid Abdelnour with SEARCH Alliance San Diego
hCoV-19/Jordan/SR-048/2020	EPI_ISL_430006	Biolab Diagnostic Laboratories	Issa Abu-Dayyeh, Ahmad Tibi, Lama Hussein, Line Mohammad, Zein Naber, Amid Abdelnour with SEARCH Alliance San Diego
hCoV-19/Jordan/SR-049/2020	EPI_ISL_430007	Biolab Diagnostic Laboratories	Issa Abu-Dayyeh, Ahmad Tibi, Lama Hussein, Line Mohammad, Zein Naber, Amid Abdelnour with SEARCH Alliance San Diego
hCoV-19/Jordan/SR-052/2020	EPI_ISL_430009	Biolab Diagnostic Laboratories	Issa Abu-Dayyeh, Ahmad Tibi, Lama Hussein, Line Mohammad, Zein Naber, Amid Abdelnour with SEARCH Alliance San Diego
hCoV-19/Jordan/SR-053/2020	EPI_ISL_430011	Biolab Diagnostic Laboratories	Issa Abu-Dayyeh, Ahmad Tibi, Lama Hussein, Line Mohammad, Zein Naber, Amid Abdelnour with SEARCH Alliance San Diego
hCoV-19/Jordan/SR-054/2020	EPI_ISL_430012	Biolab Diagnostic Laboratories	Issa Abu-Dayyeh, Ahmad Tibi, Lama Hussein, Line Mohammad, Zein Naber, Amid Abdelnour with SEARCH Alliance San Diego
hCoV-19/Jordan/SR-056/2020	EPI_ISL_430014	Biolab Diagnostic Laboratories	Issa Abu-Dayyeh, Ahmad Tibi, Lama Hussein, Line Mohammad, Zein Naber, Amid Abdelnour with SEARCH Alliance San Diego
hCoV-19/Jordan/SR-057/2020	EPI_ISL_430015	Biolab Diagnostic Laboratories	Issa Abu-Dayyeh, Ahmad Tibi, Lama Hussein, Line Mohammad, Zein Naber, Amid Abdelnour with SEARCH Alliance San Diego
hCoV-19/Egypt/NRC-03/2020	EPI_ISL_430819	Center of Scientific Excellence for Influenza Viruses, National Research Centre	Mohamed Ahmed Al-, Ahmed Kandell, Ahmed Mostafa, Rabeh El-Shehney, Mahmoud Shehata, Wael Roshdy, Shymaa Showky Ahmed, Amal Naguib, Nancy M. El Guindy, Mokhtar Goma, Ahmed El-Taweel, Ahmed E Kayed, Yassin Moatasm, Omnia Kutkat, Sara Mahmoud, Mina Kamel, Abo Shama, M Noura, Mohamed El Sayes
hCoV-19/Egypt/NRC-01/2020	EPI_ISL_430820	Center of Scientific Excellence for Influenza Viruses, National Research Centre	Mohamed Ahmed Al-, Ahmed Kandell, Ahmed Mostafa, Rabeh El-Shehney, Mahmoud Shehata, Wael Roshdy, Shymaa Showky Ahmed, Amal Naguib, Mokhtar Goma, Ahmed El-Taweel, Ahmed E Kayed, Yassin Moatasm, Omnia Kutkat, Sara Mahmoud, Mina Kamel, Abo Shama, M Noura, Mohamed El Sayes, Nancy M. El Guindy
hCoV-19/UnitedArabEmirates/L0/2020	EPI_ISL_435119	Mohammed Bin Rashid University of Medicine and Health Sciences	Ahmad Abou Tayoun, Tom Loney, Hamda Khansheh, Sathishkumar Ramaswamy, Divinial Harilal, Zulfu Omar Deesi, Rupa Murthy Varghese, Hanan Al Suwaidi, Abdumajeed Alkhaja, Mohammed Uddin, Rifat Hamoudi, Rabih Halwani, Abiola Catherine Senok, Qutayba Hamid, Norbert Nowotny, Alwaili Alsheikh-Ali
hCoV-19/UnitedArabEmirates/L0184/2020	EPI_ISL_435121	Mohammed Bin Rashid University of Medicine and Health Sciences	Ahmad Abou Tayoun, Tom Loney, Hamda Khansheh, Sathishkumar Ramaswamy, Divinial Harilal, Zulfu Omar Deesi, Rupa Murthy Varghese, Hanan Al Suwaidi, Abdumajeed Alkhaja, Mohammed Uddin, Rifat Hamoudi, Rabih Halwani, Abiola Catherine Senok, Qutayba Hamid, Norbert Nowotny, Alwaili Alsheikh-Ali
hCoV-19/UnitedArabEmirates/L0904/2020	EPI_ISL_435126	Mohammed Bin Rashid University of Medicine and Health Sciences	Ahmad Abou Tayoun, Tom Loney, Hamda Khansheh, Sathishkumar Ramaswamy, Divinial Harilal, Zulfu Omar Deesi, Rupa Murthy Varghese, Hanan Al Suwaidi, Abdumajeed Alkhaja, Mohammed Uddin, Rifat Hamoudi, Rabih Halwani, Abiola Catherine Senok, Qutayba Hamid, Norbert Nowotny, Alwaili Alsheikh-Ali
hCoV-19/UnitedArabEmirates/L1758/2020	EPI_ISL_435129	Mohammed Bin Rashid University of Medicine and Health Sciences	Ahmad Abou Tayoun, Tom Loney, Hamda Khansheh, Sathishkumar Ramaswamy, Divinial Harilal, Zulfu Omar Deesi, Rupa Murthy Varghese, Hanan Al Suwaidi, Abdumajeed Alkhaja, Mohammed Uddin, Rifat Hamoudi, Rabih Halwani, Abiola Catherine Senok, Qutayba Hamid, Norbert Nowotny, Alwaili Alsheikh-Ali
hCoV-19/UnitedArabEmirates/L2185/2020	EPI_ISL_435130	Mohammed Bin Rashid University of Medicine and Health Sciences	Ahmad Abou Tayoun, Tom Loney, Hamda Khansheh, Sathishkumar Ramaswamy, Divinial Harilal, Zulfu Omar Deesi, Rupa Murthy Varghese, Hanan Al Suwaidi, Abdumajeed Alkhaja, Mohammed Uddin, Rifat Hamoudi, Rabih Halwani, Abiola Catherine Senok, Qutayba Hamid, Norbert Nowotny, Alwaili Alsheikh-Ali
hCoV-19/UnitedArabEmirates/L2409/2020	EPI_ISL_435131	Mohammed Bin Rashid University of Medicine and Health Sciences	Ahmad Abou Tayoun, Tom Loney, Hamda Khansheh, Sathishkumar Ramaswamy, Divinial Harilal, Zulfu Omar Deesi, Rupa Murthy Varghese, Hanan Al Suwaidi, Abdumajeed Alkhaja, Mohammed Uddin, Rifat Hamoudi, Rabih Halwani, Abiola Catherine Senok, Qutayba Hamid, Norbert Nowotny, Alwaili Alsheikh-Ali
hCoV-19/UnitedArabEmirates/L4184/2020	EPI_ISL_435133	Mohammed Bin Rashid University of Medicine and Health Sciences	Ahmad Abou Tayoun, Tom Loney, Hamda Khansheh, Sathishkumar Ramaswamy, Divinial Harilal, Zulfu Omar Deesi, Rupa Murthy Varghese, Hanan Al Suwaidi, Abdumajeed Alkhaja, Mohammed Uddin, Rifat Hamoudi, Rabih Halwani, Abiola Catherine Senok, Qutayba Hamid, Norbert Nowotny, Alwaili Alsheikh-Ali
hCoV-19/UnitedArabEmirates/L4280/2020	EPI_ISL_435134	Mohammed Bin Rashid University of Medicine and Health Sciences	Ahmad Abou Tayoun, Tom Loney, Hamda Khansheh, Sathishkumar Ramaswamy, Divinial Harilal, Zulfu Omar Deesi, Rupa Murthy Varghese, Hanan Al Suwaidi, Abdumajeed Alkhaja, Mohammed Uddin, Rifat Hamoudi, Rabih Halwani, Abiola Catherine Senok, Qutayba Hamid, Norbert Nowotny, Alwaili Alsheikh-Ali
hCoV-19/UnitedArabEmirates/L4682/2020	EPI_ISL_435135	Mohammed Bin Rashid University of Medicine and Health Sciences	Ahmad Abou Tayoun, Tom Loney, Hamda Khansheh, Sathishkumar Ramaswamy, Divinial Harilal, Zulfu Omar Deesi, Rupa Murthy Varghese, Hanan Al Suwaidi, Abdumajeed Alkhaja, Mohammed Uddin, Rifat Hamoudi, Rabih Halwani, Abiola Catherine Senok, Qutayba Hamid, Norbert Nowotny, Alwaili Alsheikh-Ali
hCoV-19/UnitedArabEmirates/L5621/2020	EPI_ISL_435136	Mohammed Bin Rashid University of Medicine and Health Sciences	Ahmad Abou Tayoun, Tom Loney, Hamda Khansheh, Sathishkumar Ramaswamy, Divinial Harilal, Zulfu Omar Deesi, Rupa Murthy Varghese, Hanan Al Suwaidi, Abdumajeed Alkhaja, Mohammed Uddin, Rifat Hamoudi, Rabih Halwani, Abiola Catherine Senok, Qutayba Hamid, Norbert Nowotny, Alwaili Alsheikh-Ali
hCoV-19/UnitedArabEmirates/L5630/2020	EPI_ISL_435137	Mohammed Bin Rashid University of Medicine and Health Sciences	Ahmad Abou Tayoun, Tom Loney, Hamda Khansheh, Sathishkumar Ramaswamy, Divinial Harilal, Zulfu Omar Deesi, Rupa Murthy Varghese, Hanan Al Suwaidi, Abdumajeed Alkhaja, Mohammed Uddin, Rifat Hamoudi, Rabih Halwani, Abiola Catherine Senok, Qutayba Hamid, Norbert Nowotny, Alwaili Alsheikh-Ali
hCoV-19/UnitedArabEmirates/L6599/2020	EPI_ISL_435138	Mohammed Bin Rashid University of Medicine and Health Sciences	Ahmad Abou Tayoun, Tom Loney, Hamda Khansheh, Sathishkumar Ramaswamy, Divinial Harilal, Zulfu Omar Deesi, Rupa Murthy Varghese, Hanan Al Suwaidi, Abdumajeed Alkhaja, Mohammed Uddin, Rifat Hamoudi, Rabih Halwani, Abiola Catherine Senok, Qutayba Hamid, Norbert Nowotny, Alwaili Alsheikh-Ali
hCoV-19/UnitedArabEmirates/L6627/2020	EPI_ISL_435139	Mohammed Bin Rashid University of Medicine and Health Sciences	Ahmad Abou Tayoun,



hCoV-19/Oman/RESP-20-1189/2020	EPI_ISL_457706	Oman-NIC	Samira Al-Marqū, Fahad Zadjali, Amina Al Jardani, Khulood Al-Mammari, Hanan Al-kindī, Fatma BaAlawi, Hamida Al Barwani, Zeyana AL-Dahmani, Intisar Al-Shukri, Aisha Al-Busaidi, Aisha Al-Amri, Ahlam Al-Amri, Mohammed Al-Tobi, Samiha Al Kharusi, Abdulla Balkhair
hCoV-19/Oman/RESP-20-1857/2020	EPI_ISL_457937	Oman-NIC	Samira Al-Marqū, Fahad Zadjali, Amina Al Jardani, Khulood Al-Mammari, Hanan Al-kindī, Fatma BaAlawi, Hamida Al Barwani, Zeyana AL-Dahmani, Intisar Al-Shukri, Aisha Al-Busaidi, Aisha Al-Amri, Ahlam Al-Amri, Mohammed Al-Tobi, Samiha Al Kharusi, Abdulla Balkhair
hCoV-19/Oman/RESP-20-1976/2020	EPI_ISL_457938	Oman-NIC	Samira Al-Marqū, Fahad Zadjali, Amina Al Jardani, Khulood Al-Mammari, Hanan Al-kindī, Fatma BaAlawi, Hamida Al Barwani, Zeyana AL-Dahmani, Intisar Al-Shukri, Aisha Al-Busaidi, Aisha Al-Amri, Ahlam Al-Amri, Mohammed Al-Tobi, Samiha Al Kharusi, Abdulla Balkhair
hCoV-19/Oman/RESP-20-2181/2020	EPI_ISL_457939	Oman-NIC	Samira Al-Marqū, Fahad Zadjali, Amina Al Jardani, Khulood Al-Mammari, Hanan Al-kindī, Fatma BaAlawi, Hamida Al Barwani, Zeyana AL-Dahmani, Intisar Al-Shukri, Aisha Al-Busaidi, Aisha Al-Amri, Ahlam Al-Amri, Mohammed Al-Tobi, Samiha Al Kharusi, Abdulla Balkhair
hCoV-19/Oman/RESP-20-2282/2020	EPI_ISL_457974	Oman-NIC	Samira Al-Marqū, Fahad Zadjali, Amina Al Jardani, Khulood Al-Mammari, Hanan Al-kindī, Fatma BaAlawi, Hamida Al Barwani, Zeyana AL-Dahmani, Intisar Al-Shukri, Aisha Al-Busaidi, Aisha Al-Amri, Ahlam Al-Amri, Mohammed Al-Tobi, Samiha Al Kharusi, Abdulla Balkhair
hCoV-19/Oman/RESP-20-2523/2020	EPI_ISL_457975	Oman-NIC	Samira Al-Marqū, Fahad Zadjali, Amina Al Jardani, Khulood Al-Mammari, Hanan Al-kindī, Fatma BaAlawi, Hamida Al Barwani, Zeyana AL-Dahmani, Intisar Al-Shukri, Aisha Al-Busaidi, Aisha Al-Amri, Ahlam Al-Amri, Mohammed Al-Tobi, Samiha Al Kharusi, Abdulla Balkhair
hCoV-19/Oman/RESP-20-2631/2020	EPI_ISL_457976	Oman-NIC	Samira Al-Marqū, Fahad Zadjali, Amina Al Jardani, Khulood Al-Mammari, Hanan Al-kindī, Fatma BaAlawi, Hamida Al Barwani, Zeyana AL-Dahmani, Intisar Al-Shukri, Aisha Al-Busaidi, Aisha Al-Amri, Ahlam Al-Amri, Mohammed Al-Tobi, Samiha Al Kharusi, Abdulla Balkhair
hCoV-19/Oman/RESP-20-2850/2020	EPI_ISL_457977	Oman-NIC	Samira Al-Marqū, Fahad Zadjali, Amina Al Jardani, Khulood Al-Mammari, Hanan Al-kindī, Fatma BaAlawi, Hamida Al Barwani, Zeyana AL-Dahmani, Intisar Al-Shukri, Aisha Al-Busaidi, Aisha Al-Amri, Ahlam Al-Amri, Mohammed Al-Tobi, Samiha Al Kharusi, Abdulla Balkhair
hCoV-19/Oman/RESP-20-2857/2020	EPI_ISL_457978	Oman-NIC	Samira Al-Marqū, Fahad Zadjali, Amina Al Jardani, Khulood Al-Mammari, Hanan Al-kindī, Fatma BaAlawi, Hamida Al Barwani, Zeyana AL-Dahmani, Intisar Al-Shukri, Aisha Al-Busaidi, Aisha Al-Amri, Ahlam Al-Amri, Mohammed Al-Tobi, Samiha Al Kharusi, Abdulla Balkhair
hCoV-19/Oman/RESP-20-3080/2020	EPI_ISL_457979	Oman-NIC	Samira Al-Marqū, Fahad Zadjali, Amina Al Jardani, Khulood Al-Mammari, Hanan Al-kindī, Fatma BaAlawi, Hamida Al Barwani, Zeyana AL-Dahmani, Intisar Al-Shukri, Aisha Al-Busaidi, Aisha Al-Amri, Ahlam Al-Amri, Mohammed Al-Tobi, Samiha Al Kharusi, Abdulla Balkhair
hCoV-19/Oman/RESP-20-3515/2020	EPI_ISL_457980	Oman-NIC	Samira Al-Marqū, Fahad Zadjali, Amina Al Jardani, Khulood Al-Mammari, Hanan Al-kindī, Fatma BaAlawi, Hamida Al Barwani, Zeyana AL-Dahmani, Intisar Al-Shukri, Aisha Al-Busaidi, Aisha Al-Amri, Ahlam Al-Amri, Mohammed Al-Tobi, Samiha Al Kharusi, Abdulla Balkhair
hCoV-19/Oman/RESP-20-3343/2020	EPI_ISL_457985	Oman-NIC	Samira Al-Marqū, Fahad Zadjali, Amina Al Jardani, Khulood Al-Mammari, Hanan Al-kindī, Fatma BaAlawi, Hamida Al Barwani, Zeyana AL-Dahmani, Intisar Al-Shukri, Aisha Al-Busaidi, Aisha Al-Amri, Ahlam Al-Amri, Mohammed Al-Tobi, Samiha Al Kharusi, Abdulla Balkhair
hCoV-19/Oman/RESP-20-3700/2020	EPI_ISL_457986	Oman-NIC	Samira Al-Marqū, Fahad Zadjali, Amina Al Jardani, Khulood Al-Mammari, Hanan Al-kindī, Fatma BaAlawi, Hamida Al Barwani, Zeyana AL-Dahmani, Intisar Al-Shukri, Aisha Al-Busaidi, Aisha Al-Amri, Ahlam Al-Amri, Mohammed Al-Tobi, Samiha Al Kharusi, Abdulla Balkhair
hCoV-19/Oman/RESP-20-4028/2020	EPI_ISL_457987	Oman-NIC	Samira Al-Marqū, Fahad Zadjali, Amina Al Jardani, Khulood Al-Mammari, Hanan Al-kindī, Fatma BaAlawi, Hamida Al Barwani, Zeyana AL-Dahmani, Intisar Al-Shukri, Aisha Al-Busaidi, Aisha Al-Amri, Ahlam Al-Amri, Mohammed Al-Tobi, Samiha Al Kharusi, Abdulla Balkhair
hCoV-19/Oman/RESP-20-4153/2020	EPI_ISL_457988	Oman-NIC	Samira Al-Marqū, Fahad Zadjali, Amina Al Jardani, Khulood Al-Mammari, Hanan Al-kindī, Fatma BaAlawi, Hamida Al Barwani, Zeyana AL-Dahmani, Intisar Al-Shukri, Aisha Al-Busaidi, Aisha Al-Amri, Ahlam Al-Amri, Mohammed Al-Tobi, Samiha Al Kharusi, Abdulla Balkhair
hCoV-19/Oman/RESP-20-4252/2020	EPI_ISL_457989	Oman-NIC	Samira Al-Marqū, Fahad Zadjali, Amina Al Jardani, Khulood Al-Mammari, Hanan Al-kindī, Fatma BaAlawi, Hamida Al Barwani, Zeyana AL-Dahmani, Intisar Al-Shukri, Aisha Al-Busaidi, Aisha Al-Amri, Ahlam Al-Amri, Mohammed Al-Tobi, Samiha Al Kharusi, Abdulla Balkhair
hCoV-19/Oman/RESP-20-4400/2020	EPI_ISL_457990	Oman-NIC	Samira Al-Marqū, Fahad Zadjali, Amina Al Jardani, Khulood Al-Mammari, Hanan Al-kindī, Fatma BaAlawi, Hamida Al Barwani, Zeyana AL-Dahmani, Intisar Al-Shukri, Aisha Al-Busaidi, Aisha Al-Amri, Ahlam Al-Amri, Mohammed Al-Tobi, Samiha Al Kharusi, Abdulla Balkhair
hCoV-19/Tunisia/MHT_2/2020	EPI_ISL_458286	unknown	Handrick,S.,Bestehorn-Williams,J.M.S.,Eckstein,S.,Walter,M.C.,Antwerpen,M.H.,Rehn,A.,Najla,H.,Stoecker,K.,Woeffel,R. and Ben Moussa,M.
hCoV-19/Morocco/6887/2020	EPI_ISL_459965	Institut Pasteur du Maroc	Marion Barbet, Sylvie Behillil, MvDline Bizard, Angela Brisebarre, Camille Capel, Etienne Simon-Loriv'pre, Vincent Enouf, Maud Vanpeene, Sylvie van der Werf, Latifa Anga, Abdellah Faouzi, Anass Abbad, Mjid Eloualid, Jalal Nourill, Anderrahmane Maaroufi
hCoV-19/Morocco/6888/2020	EPI_ISL_459966	Institut Pasteur du Maroc	Marion Barbet, Sylvie Behillil, MvDline Bizard, Angela Brisebarre, Camille Capel, Etienne Simon-Loriv'pre, Vincent Enouf, Maud Vanpeene, Sylvie van der Werf, Latifa Anga, Abdellah Faouzi, Anass Abbad, Mjid Eloualid, Jalal Nourill, Anderrahmane Maaroufi
hCoV-19/Morocco/6889/2020	EPI_ISL_459967	Institut Pasteur du Maroc	Marion Barbet, Sylvie Behillil, MvDline Bizard, Angela Brisebarre, Camille Capel, Etienne Simon-Loriv'pre, Vincent Enouf, Maud Vanpeene, Sylvie van der Werf, Latifa Anga, Abdellah Faouzi, Anass Abbad, Mjid Eloualid, Jalal Nourill, Anderrahmane Maaroufi
hCoV-19/Morocco/6890/2020	EPI_ISL_459968	Institut Pasteur du Maroc	Marion Barbet, Sylvie Behillil, MvDline Bizard, Angela Brisebarre, Camille Capel, Etienne Simon-Loriv'pre, Vincent Enouf, Maud Vanpeene, Sylvie van der Werf, Latifa Anga, Abdellah Faouzi, Anass Abbad, Mjid Eloualid, Jalal Nourill, Anderrahmane Maaroufi
hCoV-19/Morocco/6894/2020	EPI_ISL_459972	Institut Pasteur du Maroc	Marion Barbet, Sylvie Behillil, MvDline Bizard, Angela Brisebarre, Camille Capel, Etienne Simon-Loriv'pre, Vincent Enouf, Maud Vanpeene, Sylvie van der Werf, Latifa Anga, Abdellah Faouzi, Anass Abbad, Mjid Eloualid, Jalal Nourill, Anderrahmane Maaroufi
hCoV-19/Morocco/6895/2020	EPI_ISL_459973	Institut Pasteur du Maroc	Marion Barbet, Sylvie Behillil, MvDline Bizard, Angela Brisebarre, Camille Capel, Etienne Simon-Loriv'pre, Vincent Enouf, Maud Vanpeene, Sylvie van der Werf, Latifa Anga, Abdellah Faouzi, Anass Abbad, Mjid Eloualid, Jalal Nourill, Anderrahmane Maaroufi
hCoV-19/Morocco/6896/2020	EPI_ISL_459974	Institut Pasteur du Maroc	Marion Barbet, Sylvie Behillil, MvDline Bizard, Angela Brisebarre, Camille Capel, Etienne Simon-Loriv'pre, Vincent Enouf, Maud Vanpeene, Sylvie van der Werf, Latifa Anga, Abdellah Faouzi, Anass Abbad, Mjid Eloualid, Jalal Nourill, Anderrahmane Maaroufi
hCoV-19/Morocco/6898/2020	EPI_ISL_459976	Institut Pasteur du Maroc	Marion Barbet, Sylvie Behillil, MvDline Bizard, Angela Brisebarre, Camille Capel, Etienne Simon-Loriv'pre, Vincent Enouf, Maud Vanpeene, Sylvie van der Werf, Latifa Anga, Abdellah Faouzi, Anass Abbad, Mjid Eloualid, Jalal Nourill, Anderrahmane Maaroufi
hCoV-19/Morocco/6906/2020	EPI_ISL_459984	Institut Pasteur du Maroc	Marion Barbet, Sylvie Behillil, MvDline Bizard, Angela Brisebarre, Camille Capel, Etienne Simon-Loriv'pre, Vincent Enouf, Maud Vanpeene, Sylvie van der Werf, Latifa Anga, Abdellah Faouzi, Anass Abbad, Mjid Eloualid, Jalal Nourill, Anderrahmane Maaroufi
hCoV-19/Tunisia/COV0010-12/2020	EPI_ISL_463001	unknown	Fares,W.,Triki,H.
hCoV-19/Tunisia/COV0880/2020	EPI_ISL_463002	unknown	Fares,W.,Triki,H.
hCoV-19/Tunisia/COV1339/2020	EPI_ISL_463003	unknown	Fares,W.,Triki,H.
hCoV-19/Tunisia/COV1663/2020	EPI_ISL_463004	unknown	Fares,W.,Triki,H.
hCoV-19/Tunisia/COV0425/2020	EPI_ISL_463005	unknown	Fares,W.,Triki,H.
hCoV-19/Tunisia/COV1482/2020	EPI_ISL_463006	unknown	Fares,W.,Triki,H.
hCoV-19/Egypt/CUNCI-HGC002/2020	EPI_ISL_468045	Egyptian National Cancer Institute (ENCI)	Zekri, Abdel Rahman N., Amer,K.E., Ahmed,O.S., Soliman,H.K., Hafez,M.M., Bahnassy,A.A., Abdelhamid,W., Gad,A., Ali,M., Hassan,W., Samir,M., Raouf,A., Hamdy,M.S., Soliman,M.S., Elsisy,M.H., Elkhatteeb,S.M., Ezzelarab,M.H., Abouelhoda, Mohamed
hCoV-19/Egypt/CUNCI-HGC007/2020	EPI_ISL_468046	Egyptian National Cancer Institute (ENCI)	Zekri, Abdel Rahman N., Amer,K.E., Ahmed,O.S., Soliman,H.K., Hafez,M.M., Bahnassy,A.A., Abdelhamid,W., Gad,A., Ali,M., Hassan,W., Samir,M., Raouf,A., Hamdy,M.S., Soliman,M.S., Elsisy,M.H., Elkhatteeb,S.M., Ezzelarab,M.H., Abouelhoda, Mohamed
hCoV-19/Egypt/CUNCI-HGC013/2020	EPI_ISL_468047	Egyptian National Cancer Institute (ENCI)	Zekri, Abdel Rahman N., Amer,K.E., Ahmed,O.S., Soliman,H.K., Hafez,M.M., Bahnassy,A.A., Abdelhamid,W., Gad,A., Ali,M., Hassan,W., Samir,M., Raouf,A., Hamdy,M.S., Soliman,M.S., Elsisy,M.H., Elkhatteeb,S.M., Ezzelarab,M.H., Abouelhoda, Mohamed
hCoV-19/Egypt/CUNCI-HGC003/2020	EPI_ISL_468049	Egyptian National Cancer Institute (ENCI)	Zekri, Abdel Rahman N., Amer,K.E., Ahmed,O.S., Soliman,H.K., Hafez,M.M., Bahnassy,A.A., Abdelhamid,W., Gad,A., Ali,M., Hassan,W., Samir,M., Raouf,A., Hamdy,M.S., Soliman,M.S., Elsisy,M.H., Elkhatteeb,S.M., Ezzelarab,M.H., Abouelhoda, Mohamed
hCoV-19/Egypt/CUNCI-HGC028/2020	EPI_ISL_468062	Egyptian National Cancer Institute (ENCI)	Zekri, Abdel Rahman N., Amer,K.E., Ahmed,O.S., Soliman,H.K., Hafez,M.M., Bahnassy,A.A., Abdelhamid,W., Gad,A., Ali,M., Hassan,W., Samir,M., Raouf,A., Hamdy,M.S., Soliman,M.S., Elsisy,M.H., Elkhatteeb,S.M., Ezzelarab,M.H., Abouelhoda, Mohamed
hCoV-19/Morocco/RMPS-02/2020	EPI_ISL_469049	LNR National Reference Laboratory, Mohammed VI University of Health Sciences	Meriem LAAMARTI, Souad KARTTI, Rokaia LAAMRTI, M.W. CHEMAO-EUFIRH, Loubna ALLAM, Mouna OUAUGHIR, Imane SMYEJ, Jalila RAHOUI, Houda BENRAHMA, Jalil El Atar, Idrissa Diawara, Rachid EL JAQOUDI, Laila SBABOU, Chakib NEJJARI, Saïd AMZAZI, Rachid MENTAG, Lahcen BELYAMANI and Azeddine IBRAHIMI
hCoV-19/Morocco/RMPS-03/2020	EPI_ISL_469051	LNR National Reference Laboratory, Mohammed VI University of Health Sciences	Meriem LAAMARTI, Souad KARTTI, Rokaia LAAMRTI, M.W. CHEMAO-EUFIRH, Loubna ALLAM, Mouna OUAUGHIR, Imane SMYEJ, Jalila RAHOUI, Houda BENRAHMA, Jalil El Atar, Idrissa Diawara, Rachid EL JAQOUDI, Laila SBABOU, Chakib NEJJARI, Saïd AMZAZI, Rachid MENTAG, Lahcen BELYAMANI and Azeddine IBRAHIMI

hCoV-19/Morocco/RMPS-04/2020	EPI_ISL_469052	LNR National Reference Laboratory, Mohammed VI University of Health Sciences	Meriem LAAMARTI, Souad KARTIT, Rokila LAAMRTI, M.W. CHEMAO-ELFIRHI, Loubna ALLAM, Mouna OUAADGHIRI, Imane SMYEI, Jalila RAHOUI, Houda BENRAHMA, Jalil El Atar, Idrissa Diawara, Rachid EL JAOUDI, Laila SBABOU, Chakib NEJJARI, Saaid AMZAZI, Rachid MENTAG, Lahcen BELYAMANI and Azeddine IBRAHIMI
hCoV-19/Morocco/RMPS-05/2020	EPI_ISL_469053	LNR National Reference Laboratory, Mohammed VI University of Health Sciences	Meriem LAAMARTI, Souad KARTIT, Rokila LAAMRTI, M.W. CHEMAO-ELFIRHI, Loubna ALLAM, Mouna OUAADGHIRI, Imane SMYEI, Jalila RAHOUI, Houda BENRAHMA, Jalil El Atar, Idrissa Diawara, Rachid EL JAOUDI, Laila SBABOU, Chakib NEJJARI, Saaid AMZAZI, Rachid MENTAG, Lahcen BELYAMANI and Azeddine IBRAHIMI
hCoV-19/Morocco/RMPS-06/2020	EPI_ISL_469054	LNR National Reference Laboratory, Mohammed VI University of Health Sciences	Meriem LAAMARTI, Souad KARTIT, Rokila LAAMRTI, M.W. CHEMAO-ELFIRHI, Loubna ALLAM, Mouna OUAADGHIRI, Imane SMYEI, Jalila RAHOUI, Houda BENRAHMA, Jalil El Atar, Idrissa Diawara, Rachid EL JAOUDI, Laila SBABOU, Chakib NEJJARI, Saaid AMZAZI, Rachid MENTAG, Lahcen BELYAMANI and Azeddine IBRAHIMI
hCoV-19/Morocco/HMIMV-Rabat102-03	EPI_ISL_471456	Centre de Virologie des Maladies Tropicales	Hicham EL ANNAZ, Elmostafa EL FAHIME, Marouane MELLOU, Youssef AKHOUAD, Mily Abdelaziz ELAIAOUI, Ahmed REGGAD, Sanaa ALAOUI-Amine, Rachid ABI, Rida TAGAJDID, Zohour KASYM, Safae ELKOUCHI, Nadia TOULI, Farida HIALI, Abdelkader LAATIRS, Abdellilah LARAQUI, Tahar BAJJOU, Yassine SEKHSOIH, Idriss-Amine LAHLOU, Mostafa ELLOUENASS, Khalid ENNIBI
hCoV-19/Morocco/refstage1/2020	EPI_ISL_476559	unknown	Hajar Lemriss, SanaVC Lemriss, Amal Souiri, Narjis Amar, Mustapha Mouallif, Touria Essayagh, Jawad Bouzid, SaVcd EL Kabbaj, Abderraouf Hilali
hCoV-19/Egypt/MASRI-005/2020	EPI_ISL_482759	Medical Ain Shams Research Institute (MASRI), Ain Shams University	Hesham Elghazaly, Sara Hassan Agwa, Ahmad Moustafa, Hala Hafez, Sara Elnakeep, Shaimaa Moustafa, Aya Mohamed, Reham Mamdouh, Ghada Ismael, Ashraf Omar, Osama Mansour, Mahmoud Elmettini
hCoV-19/Egypt/MASRI-007/2020	EPI_ISL_482760	Medical Ain Shams Research Institute (MASRI), Ain Shams University	Hesham Elghazaly, Sara Hassan Agwa, Ahmad Moustafa, Hala Hafez, Sara Elnakeep, Shaimaa Moustafa, Aya Mohamed, Reham Mamdouh, Ghada Ismael, Ashraf Omar, Osama Mansour, Mahmoud Elmettini
hCoV-19/Egypt/MASRI-008/2020	EPI_ISL_482761	Medical Ain Shams Research Institute (MASRI), Ain Shams University	Hesham Elghazaly, Sara Hassan Agwa, Ahmad Moustafa, Hala Hafez, Sara Elnakeep, Shaimaa Moustafa, Aya Mohamed, Reham Mamdouh, Ghada Ismael, Ashraf Omar, Osama Mansour, Mahmoud Elmettini
hCoV-19/Egypt/MASRI-014/2020	EPI_ISL_482765	Medical Ain Shams Research Institute (MASRI), Ain Shams University	Hesham Elghazaly, Sara Hassan Agwa, Ahmad Moustafa, Hala Hafez, Sara Elnakeep, Shaimaa Moustafa, Aya Mohamed, Reham Mamdouh, Ghada Ismael, Ashraf Omar, Osama Mansour, Mahmoud Elmettini
hCoV-19/Egypt/MASRI-009/2020	EPI_ISL_483035	Medical Ain Shams Research Institute (MASRI), Ain Shams University	Hesham Elghazaly, Sara Hassan Agwa, Ahmad Moustafa, Hala Hafez, Sara Elnakeep, Shaimaa Moustafa, Aya Mohamed, Reham Mamdouh, Ghada Ismael, Ashraf Omar, Osama Mansour, Mahmoud Elmettini
hCoV-19/Morocco/INH-101/2020	EPI_ISL_4899863	Laboratoire de virologie	Hicham Oumzil, Mohamed Rhajouli, Fatima Elfallaki, Hassan Ihazmad, Abderrahmane Bimouhen, Zakia Regragui, Samira Benkeroum, Marouane Mellou, Sanaa Alaoui-Amine, Safae Ghoulane, Taha Chouati, Mouhsine Hemlali, Hamza Gharraz, Elmostafa El Fahime
hCoV-19/Morocco/INH-103/2020	EPI_ISL_4899870	Laboratoire de virologie	Hicham Oumzil, Mohamed Rhajouli, Fatima Elfallaki, Hassan Ihazmad, Abderrahmane Bimouhen, Zakia Regragui, Samira Benkeroum, Marouane Mellou, Sanaa Alaoui-Amine, Safae Ghoulane, Taha Chouati, Mouhsine Hemlali, Hamza Gharraz, Elmostafa El Fahime
hCoV-19/Morocco/INH-104/2020	EPI_ISL_4899881	Laboratoire de virologie	Hicham Oumzil, Mohamed Rhajouli, Fatima Elfallaki, Hassan Ihazmad, Abderrahmane Bimouhen, Zakia Regragui, Samira Benkeroum, Marouane Mellou, Sanaa Alaoui-Amine, Safae Ghoulane, Taha Chouati, Mouhsine Hemlali, Hamza Gharraz, Elmostafa El Fahime
hCoV-19/Morocco/INH-105/2020	EPI_ISL_4899888	Laboratoire de virologie	Hicham Oumzil, Mohamed Rhajouli, Fatima Elfallaki, Hassan Ihazmad, Abderrahmane Bimouhen, Zakia Regragui, Samira Benkeroum, Marouane Mellou, Sanaa Alaoui-Amine, Safae Ghoulane, Taha Chouati, Mouhsine Hemlali, Hamza Gharraz, Elmostafa El Fahime
hCoV-19/Morocco/INH-MN908947/2020	EPI_ISL_4899917	Laboratoire de virologie	Mohamed Rhajouli, Hicham Oumzil, Fatima Elfallaki, Hassan Ihazmad, Abderrahmane Bimouhen, Zakia Regragui, Samira Benkeroum, Marouane Mellou, Sanaa Alaoui-Amine, Safae Ghoulane, Taha Chouati, Mouhsine Hemlali, Hamza Gharraz, Elmostafa El Fahime
hCoV-19/SaudiArabia/477/2020	EPI_ISL_489996	King Fahad Medical City	Alosaimi,B, Naeem,A., Alghoraihi,M., Enani,M,
hCoV-19/SaudiArabia/492/2020	EPI_ISL_489997	King Fahad Medical City	Alosaimi,B, Naeem,A., Alghoraihi,M., Enani,M,
hCoV-19/SaudiArabia/509/2020	EPI_ISL_489998	King Fahad Medical City	Alosaimi,B, Naeem,A., Alghoraihi,M., Enani,M,
hCoV-19/SaudiArabia/518/2020	EPI_ISL_489999	King Fahad Medical City	Alosaimi,B, Naeem,A., Alghoraihi,M., Enani,M,
hCoV-19/SaudiArabia/523/2020	EPI_ISL_490000	King Fahad Medical City	Alosaimi,B, Naeem,A., Alghoraihi,M., Enani,M,
hCoV-19/SaudiArabia/545/2020	EPI_ISL_490001	King Fahad Medical City	Alosaimi,B, Naeem,A., Alghoraihi,M., Enani,M,
hCoV-19/SaudiArabia/553/2020	EPI_ISL_490002	King Fahad Medical City	Alosaimi,B, Naeem,A., Alghoraihi,M., Enani,M,
hCoV-19/SaudiArabia/562/2020	EPI_ISL_490003	King Fahad Medical City	Alosaimi,B, Naeem,A., Alghoraihi,M., Enani,M,
hCoV-19/SaudiArabia/578/2020	EPI_ISL_490004	King Fahad Medical City	Alosaimi,B, Naeem,A., Alghoraihi,M., Enani,M,
hCoV-19/SaudiArabia/583/2020	EPI_ISL_490005	King Fahad Medical City	Alosaimi,B, Naeem,A., Alghoraihi,M., Enani,M,
hCoV-19/SaudiArabia/596/2020	EPI_ISL_490006	King Fahad Medical City	Alosaimi,B, Naeem,A., Alghoraihi,M., Enani,M,
hCoV-19/SaudiArabia/610/2020	EPI_ISL_490007	King Fahad Medical City	Alosaimi,B, Naeem,A., Alghoraihi,M., Enani,M,
hCoV-19/SaudiArabia/627/2020	EPI_ISL_490008	King Fahad Medical City	Alosaimi,B, Naeem,A., Alghoraihi,M., Enani,M,
hCoV-19/SaudiArabia/640/2020	EPI_ISL_490009	King Fahad Medical City	Alosaimi,B, Naeem,A., Alghoraihi,M., Enani,M,
hCoV-19/SaudiArabia/656/2020	EPI_ISL_490010	King Fahad Medical City	Alosaimi,B, Naeem,A., Alghoraihi,M., Enani,M,
hCoV-19/SaudiArabia/671/2020	EPI_ISL_490011	King Fahad Medical City	Alosaimi,B, Naeem,A., Alghoraihi,M., Enani,M,
hCoV-19/SaudiArabia/677/2020	EPI_ISL_490012	King Fahad Medical City	Alosaimi,B, Naeem,A., Alghoraihi,M., Enani,M,
hCoV-19/SaudiArabia/KAIMRC01/2020	EPI_ISL_507010	unknown	Alghoribi,M,F.
hCoV-19/Oman/RESP-20-4395/2020	EPI_ISL_518822	Oman-National Influenza Center	Samira Al-Mahruqi, Abdul Latif Khan, Samiha Al-Kharusi, Adil Khan , Ahmed Al-Rawahi, Sajjad Asaf, Amina Al-Jardani, Hanan Al-Kindi, Intisar Al-Shukri, Adil Al-Wahabi, Seif Al-Abri, Ahmed Al-Herrai
hCoV-19/Iraq/ICGEB-5T/2020	EPI_ISL_582030	Biology Department, College of Science, Al-Muthanna University	Nihad Al-Rashed, Danilo Licastro, Sreejith Rajasekharan, Simeone Dal Monego, Alessandro Marcello
hCoV-19/Iran/GRC-1600/2020	EPI_ISL_582033	Department of Pathology, School of Medicine, Imam Khomeini Hospital, Tehr	Zohreh Fattahi, Marzieh Mohseni, Khadijeh Jalalvand, Azam Ghaziasadi, Seydeh elham Mortazavi, Ali Jafarpour, Azar Hadadi, Alireza Abdollahi, Saber Soltani, Reza Najafipour, Kimia Kahrizi, Seyed Mohammad Jazayeri, Hossein Najmabadi
hCoV-19/UnitedArabEmirates/skmc-920	EPI_ISL_582125	Sheikh Khalifa Medical City	Amirtharaj Francis, Sajeed Abdul, Hala Imambaccus, Sahar Almarzooqi, Hilba Saud, Stefan Weber
hCoV-19/UnitedArabEmirates/skmc-920	EPI_ISL_582126	Sheikh Khalifa Medical City	Amirtharaj Francis, Sajeed Abdul, Hala Imambaccus, Sahar Almarzooqi, Hilba Saud, Stefan Weber
hCoV-19/UnitedArabEmirates/skmc-920	EPI_ISL_582608	Sheikh Khalifa Medical City	Amirtharaj Francis, Sajeed Abdul, Hala Imambaccus, Sahar Almarzooqi, Hilba Saud, Stefan Weber
hCoV-19/UnitedArabEmirates/skmc-004	EPI_ISL_582613	Sheikh Khalifa Medical City	Amirtharaj Francis, Sajeed Abdul, Hala Imambaccus, Sahar Almarzooqi, Hilba Saud, Stefan Weber
hCoV-19/UnitedArabEmirates/skmc-053	EPI_ISL_582620	Sheikh Khalifa Medical City	Amirtharaj Francis, Sajeed Abdul, Hala Imambaccus, Sahar Almarzooqi, Hilba Saud, Stefan Weber
hCoV-19/UnitedArabEmirates/skmc-001	EPI_ISL_582624	Sheikh Khalifa Medical City	Amirtharaj Francis, Sajeed Abdul, Hala Imambaccus, Sahar Almarzooqi, Hilba Saud, Stefan Weber
hCoV-19/UnitedArabEmirates/skmc-003	EPI_ISL_582625	Sheikh Khalifa Medical City	Amirtharaj Francis, Sajeed Abdul, Hala Imambaccus, Sahar Almarzooqi, Hilba Saud, Stefan Weber
hCoV-19/Iran/GRC-1325/2020	EPI_ISL_594186	Department of Pathology, School of Medicine, Imam Khomeini Hospital, Tehr	Zohreh Fattahi, Marzieh Mohseni, Khadijeh Jalalvand, Azam Ghaziasadi, Seydeh elham Mortazavi, Ali Jafarpour, Azar Hadadi, Alireza Abdollahi, Saber Soltani, Reza Najafipour, Kimia Kahrizi, Seyed Mohammad Jazayeri, Hossein Najmabadi
hCoV-19/Iran/GRC-43/2020	EPI_ISL_596453	Booali laboratory, Qom, Iran	Zohreh Fattahi, Marzieh Mohseni, Khadijeh Jalalvand, Azam Ghaziasadi, Seydeh elham Mortazavi, Ali Jafarpour, Mohammad Khazeni, Seyed Amir Momeni, Kimia Kahrizi, Seyed Mohammad Jazayeri, Hossein Najmabadi
hCoV-19/Iran/GRC-70/2020	EPI_ISL_596454	Infectious Disease and Tropical Medicine Research Center, Resistant Tubercu	Zohreh Fattahi, Marzieh Mohseni, Khadijeh Jalalvand, Azam Ghaziasadi, Seydeh elham Mortazavi, Ali Jafarpour, Ebrahim Kord, Seyed Mohammad Hashemi-Shahri, Kimia Kahrizi, Seyed Mohammad Jazayeri, Hossein Najmabadi

hCoV-19/Palestine/13/2020	EPI_ISL_596502	Palestinian Ministry of Health	Nouar Qutob, Zaidoun Salah, Damien Richard, Hisham Darwish, Husam Sallam, Issa Shtayeh, Osama Najjar, Mahmoud Ruzayqat, Dana Najjar, Francois Ballou, Lucy van Dorp
hCoV-19/Palestine/14/2020	EPI_ISL_596503	Palestinian Ministry of Health	Nouar Qutob, Zaidoun Salah, Damien Richard, Hisham Darwish, Husam Sallam, Issa Shtayeh, Osama Najjar, Mahmoud Ruzayqat, Dana Najjar, Francois Ballou, Lucy van Dorp
hCoV-19/Palestine/15/2020	EPI_ISL_596504	Palestinian Ministry of Health	Nouar Qutob, Zaidoun Salah, Damien Richard, Hisham Darwish, Husam Sallam, Issa Shtayeh, Osama Najjar, Mahmoud Ruzayqat, Dana Najjar, Francois Ballou, Lucy van Dorp
hCoV-19/Palestine/19/2020	EPI_ISL_596506	Palestinian Ministry of Health	Nouar Qutob, Zaidoun Salah, Damien Richard, Hisham Darwish, Husam Sallam, Issa Shtayeh, Osama Najjar, Mahmoud Ruzayqat, Dana Najjar, Francois Ballou, Lucy van Dorp
hCoV-19/Palestine/21/2020	EPI_ISL_596508	Palestinian Ministry of Health	Nouar Qutob, Zaidoun Salah, Damien Richard, Hisham Darwish, Husam Sallam, Issa Shtayeh, Osama Najjar, Mahmoud Ruzayqat, Dana Najjar, Francois Ballou, Lucy van Dorp
hCoV-19/Palestine/22/2020	EPI_ISL_596509	Palestinian Ministry of Health	Nouar Qutob, Zaidoun Salah, Damien Richard, Hisham Darwish, Husam Sallam, Issa Shtayeh, Osama Najjar, Mahmoud Ruzayqat, Dana Najjar, Francois Ballou, Lucy van Dorp
hCoV-19/Palestine/23/2020	EPI_ISL_596510	Palestinian Ministry of Health	Nouar Qutob, Zaidoun Salah, Damien Richard, Hisham Darwish, Husam Sallam, Issa Shtayeh, Osama Najjar, Mahmoud Ruzayqat, Dana Najjar, Francois Ballou, Lucy van Dorp
hCoV-19/Palestine/24/2020	EPI_ISL_596511	Palestinian Ministry of Health	Nouar Qutob, Zaidoun Salah, Damien Richard, Hisham Darwish, Husam Sallam, Issa Shtayeh, Osama Najjar, Mahmoud Ruzayqat, Dana Najjar, Francois Ballou, Lucy van Dorp
hCoV-19/Palestine/28/2020	EPI_ISL_596512	Palestinian Ministry of Health	Nouar Qutob, Zaidoun Salah, Damien Richard, Hisham Darwish, Husam Sallam, Issa Shtayeh, Osama Najjar, Mahmoud Ruzayqat, Dana Najjar, Francois Ballou, Lucy van Dorp
hCoV-19/Palestine/29/2020	EPI_ISL_596513	Palestinian Ministry of Health	Nouar Qutob, Zaidoun Salah, Damien Richard, Hisham Darwish, Husam Sallam, Issa Shtayeh, Osama Najjar, Mahmoud Ruzayqat, Dana Najjar, Francois Ballou, Lucy van Dorp
hCoV-19/Palestine/30/2020	EPI_ISL_596515	Palestinian Ministry of Health	Nouar Qutob, Zaidoun Salah, Damien Richard, Hisham Darwish, Husam Sallam, Issa Shtayeh, Osama Najjar, Mahmoud Ruzayqat, Dana Najjar, Francois Ballou, Lucy van Dorp
hCoV-19/Palestine/31/2020	EPI_ISL_596516	Palestinian Ministry of Health	Nouar Qutob, Zaidoun Salah, Damien Richard, Hisham Darwish, Husam Sallam, Issa Shtayeh, Osama Najjar, Mahmoud Ruzayqat, Dana Najjar, Francois Ballou, Lucy van Dorp
hCoV-19/Palestine/32/2020	EPI_ISL_596517	Palestinian Ministry of Health	Nouar Qutob, Zaidoun Salah, Damien Richard, Hisham Darwish, Husam Sallam, Issa Shtayeh, Osama Najjar, Mahmoud Ruzayqat, Dana Najjar, Francois Ballou, Lucy van Dorp
hCoV-19/Palestine/33/2020	EPI_ISL_596518	Palestinian Ministry of Health	Nouar Qutob, Zaidoun Salah, Damien Richard, Hisham Darwish, Husam Sallam, Issa Shtayeh, Osama Najjar, Mahmoud Ruzayqat, Dana Najjar, Francois Ballou, Lucy van Dorp
hCoV-19/Palestine/66/2020	EPI_ISL_596543	Palestinian Ministry of Health	Nouar Qutob, Zaidoun Salah, Damien Richard, Hisham Darwish, Husam Sallam, Issa Shtayeh, Osama Najjar, Mahmoud Ruzayqat, Dana Najjar, Francois Ballou, Lucy van Dorp
hCoV-19/Palestine/84/2020	EPI_ISL_596558	Palestinian Ministry of Health	Nouar Qutob, Zaidoun Salah, Damien Richard, Hisham Darwish, Husam Sallam, Issa Shtayeh, Osama Najjar, Mahmoud Ruzayqat, Dana Najjar, Francois Ballou, Lucy van Dorp
hCoV-19/Palestine/86/2020	EPI_ISL_596559	Palestinian Ministry of Health	Nouar Qutob, Zaidoun Salah, Damien Richard, Hisham Darwish, Husam Sallam, Issa Shtayeh, Osama Najjar, Mahmoud Ruzayqat, Dana Najjar, Francois Ballou, Lucy van Dorp
hCoV-19/Palestine/87/2020	EPI_ISL_596560	Palestinian Ministry of Health	Nouar Qutob, Zaidoun Salah, Damien Richard, Hisham Darwish, Husam Sallam, Issa Shtayeh, Osama Najjar, Mahmoud Ruzayqat, Dana Najjar, Francois Ballou, Lucy van Dorp
hCoV-19/Palestine/88/2020	EPI_ISL_596561	Palestinian Ministry of Health	Nouar Qutob, Zaidoun Salah, Damien Richard, Hisham Darwish, Husam Sallam, Issa Shtayeh, Osama Najjar, Mahmoud Ruzayqat, Dana Najjar, Francois Ballou, Lucy van Dorp
hCoV-19/Palestine/90/2020	EPI_ISL_596563	Palestinian Ministry of Health	Nouar Qutob, Zaidoun Salah, Damien Richard, Hisham Darwish, Husam Sallam, Issa Shtayeh, Osama Najjar, Mahmoud Ruzayqat, Dana Najjar, Francois Ballou, Lucy van Dorp
hCoV-19/Egypt/C-CEIRS-19MOH/2020	EPI_ISL_605780	CEIRS Data Processing and Coordinating Center, St. Jude Center of Excellence	Roshdy,W.H., Kayed,A.E., Naguib,A., Kamel,M.N., El-Taweel,A., El-Shesheny,R., Kandell,A., Mostafa,A., Shehata,M., Gomaa,M., Mahmoud,S.H., Moatasim,Y., Kutkat,O., Mahrous,N., El-Sayes,M., Showky,S., El-Guindy,N.M., Webby,R., Kayali,G., Ali,M.A.
hCoV-19/Iran/Q100/2020	EPI_ISL_637099	Indian Council of Medical Research-National Institute of Virology,~*Microbia	Pragya D. Yadav, Gururaj Rao Deshpande,Padinjarematattil Thankappan Ullas, Varsha Potdar, Prasad Sarkale,Dimpal A. Nyayanit,Anita Shete-Aich,Priya Abraham
hCoV-19/Iran/NIV-P1-Q100/2020	EPI_ISL_637100	Indian Council of Medical Research-National Institute of Virology,~*Microbia	Pragya D. Yadav,Prasad Sarkale, Gururaj Rao Deshpande,Padinjarematattil Thankappan Ullas, Varsha Potdar, Dimpal A. Nyayanit,Anita Shete-Aich,Priya Abraham
hCoV-19/Iran/NIV-P2-Q100/2020	EPI_ISL_637101	Indian Council of Medical Research-National Institute of Virology,~*Microbia	Pragya D. Yadav,Prasad Sarkale, Gururaj Rao Deshpande,Padinjarematattil Thankappan Ullas, Varsha Potdar, Dimpal A. Nyayanit,Anita Shete-Aich,Priya Abraham
hCoV-19/Tunisia/3913/2020	EPI_ISL_654016	Laboratory of Microbiology, National Reference Lab, Charles Nicolle Hospital	Ithem Boutiba-Ben Boubaker, Sameh Trabelsi, Nissaf Ben Alaya, Maher Kharrat, Ala Ben Kahla, Jalila Ben Khelli, Salma Abid, Sana Ferjani, Asma Ferjani, Mouna Ben Sassi, Mouna Safer, Imen Mkada, Imen Kacem, Gales Emma, Soumaya Rammeh, Riadh Daghfous, Riadh Gouider.
hCoV-19/Tunisia/4107/2020	EPI_ISL_683329	1-Laboratory of Microbiology, National Reference Lab, Charles Nicolle Hospital	Ithem Boutiba-Ben Boubaker, Sameh Trabelsi, Nissaf Ben Alaya, Maher Kharrat, Ala Ben Kahla, Jalila Ben Khelli, Salma Abid, Sana Ferjani, Asma Ferjani, Mouna Ben Sassi, Mouna Safer, Guedi Berrabeh,Salwa Mrabet, Hanen Eliebari, Gales Emma, Riadh Daghfous, Riadh Gouider.
hCoV-19/Tunisia/3942/2020	EPI_ISL_699657	1-Laboratory of Microbiology, National Reference Lab, Charles Nicolle Hospital	Ithem Boutiba-Ben Boubaker, Sameh Trabelsi, Nissaf Ben Alaya, Maher Kharrat, Ala Ben Kahla, Jalila Ben Khelli, Salma Abid, Sana Ferjani, Asma Ferjani, Mouna Ben Sassi, Mouna Safer, Guedi Berrabeh,Salwa Mrabet, Hanen Eliebari, Gales Emma, Riadh Daghfous, Riadh Gouider.
hCoV-19/Tunisia/2909/2020	EPI_ISL_707791	1-Laboratory of Microbiology, National Reference Lab, Charles Nicolle Hospital	Ithem Boutiba-Ben Boubaker, Sameh Trabelsi, Nissaf Ben Alaya, Maher Kharrat, Ala Ben Kahla, Jalila Ben Khelli, Salma Abid, Sana Ferjani, Asma Ferjani, Mouna Ben Sassi, Mouna Safer, Awatef El Moussi, Habiba Ben Romdhane, Souissi Amira, Ines Mdini, Hanen El Jebari, Asma Ferjani, Gales Emma, Riadh Daghfous, Riadh Gouider.
hCoV-19/Tunisia/6736/2020	EPI_ISL_707792	1-Laboratory of Microbiology, National Reference Lab, Charles Nicolle Hospital	Ithem Boutiba-Ben Boubaker, Sameh Trabelsi, Nissaf Ben Alaya, Maher Kharrat, Ala Ben Kahla, Jalila Ben Khelli, Salma Abid, Sana Ferjani, Mouna Ben Sassi, Mouna Safer, Awatef El Moussi, Habiba Ben Romdhane, Souissi Amira, Ines Mdini, Hanen El Jebari, Asma Ferjani, Gales Emma, Riadh Daghfous, Riadh Gouider.
hCoV-19/Tunisia/6895/2020	EPI_ISL_763065	1-Laboratory of Microbiology, National Reference Lab, Charles Nicolle Hospital	Ithem Boutiba-Ben Boubaker, Sameh Trabelsi, Nissaf Ben Alaya, Maher Kharrat, Ala Ben Kahla, Jalila Ben Khelli, Salma Abid, Sana Ferjani, Mouna Ben Sassi, Mouna Safer, Awatef El Moussi, Habiba Ben Romdhane, Souissi Amira, Ines Mdini, Hanen El Jebari, Asma Ferjani, Gales Emma, Riadh Daghfous, Riadh Gouider.
hCoV-19/Egypt/CPHL-NRC-22/2020	EPI_ISL_794603	Central Laboratories, Egyptian Ministry of Health and Population	Kayed,A.E., Roshdy,W.H., El-Shesheny,R., Mostafa,A., Khalifa,M.K., Shehata,M., Shawky,S., Saleh,M., Gomaa,M., El Taweel,A., Mahmoud,S.H., Moatasim,Y., Kutkat,O., Kamel,M.N., Mahrous,N., El Sayes,M.A., El Guindy,N.M., Naguib,A., Kandell,A., Kayali,G., Ali,M.A.
hCoV-19/Egypt/CPHL-NRC-21/2020	EPI_ISL_794604	Central Laboratories, Egyptian Ministry of Health and Population	Kayed,A.E., Roshdy,W.H., El-Shesheny,R., Mostafa,A., Khalifa,M.K., Shehata,M., Shawky,S., Saleh,M., Gomaa,M., El Taweel,A., Mahmoud,S.H., Moatasim,Y., Kutkat,O., Kamel,M.N., Mahrous,N., El Sayes,M.A., El Guindy,N.M., Naguib,A., Kandell,A., Kayali,G., Ali,M.A.
hCoV-19/Tunisia/4874/2020	EPI_ISL_811145	Laboratory of Microbiology, National Reference Lab, Charles Nicolle Hospital	Moussi, Habiba Ben Romdhane, Souissi Amira, Ines Mdini, Hanen El Jebari, Asma Ferjani, Gales Emma, Riadh Daghfous, Riadh Gouider.
hCoV-19/Iraq/USAFSAM-S061/2020	EPI_ISL_812258	Landstuhl Regional Medical Center	Anthony Fries, Jennifer Meyer, Amanda Javorina, Sarah Purves, William Gruner, Clarise Starr, Elizabeth Macias, Fritz Castillo, Cole Anderson
hCoV-19/Iraq/USAFSAM-S062/2020	EPI_ISL_812259	Landstuhl Regional Medical Center	Anthony Fries, Jennifer Meyer, Amanda Javorina, Sarah Purves, William Gruner, Clarise Starr, Elizabeth Macias, Fritz Castillo, Cole Anderson
hCoV-19/Iraq/USAFSAM-S063/2020	EPI_ISL_812260	Landstuhl Regional Medical Center	Anthony Fries, Jennifer Meyer, Amanda Javorina, Sarah Purves, William Gruner, Clarise Starr, Elizabeth Macias, Fritz Castillo, Cole Anderson
hCoV-19/Iraq/USAFSAM-S064/2020	EPI_ISL_812261	Landstuhl Regional Medical Center	Anthony Fries, Jennifer Meyer, Amanda Javorina, Sarah Purves, William Gruner, Clarise Starr, Elizabeth Macias, Fritz Castillo, Cole Anderson
hCoV-19/Iraq/USAFSAM-S065/2020	EPI_ISL_812262	Landstuhl Regional Medical Center	Anthony Fries, Jennifer Meyer, Amanda Javorina, Sarah Purves, William Gruner, Clarise Starr, Elizabeth Macias, Fritz Castillo, Cole Anderson
hCoV-19/Iraq/USAFSAM-S068/2020	EPI_ISL_812263	Landstuhl Regional Medical Center	Anthony Fries, Jennifer Meyer, Amanda Javorina, Sarah Purves, William Gruner, Clarise Starr, Elizabeth Macias, Fritz Castillo, Cole Anderson
hCoV-19/Iraq/USAFSAM-S069/2020	EPI_ISL_812264	Landstuhl Regional Medical Center	Anthony Fries, Jennifer Meyer, Amanda Javorina, Sarah Purves, William Gruner, Clarise Starr, Elizabeth Macias, Fritz Castillo, Cole Anderson
hCoV-19/Iraq/USAFSAM-S070/2020	EPI_ISL_812265	Landstuhl Regional Medical Center	Anthony Fries, Jennifer Meyer, Amanda Javorina, Sarah Purves, William Gruner, Clarise Starr, Elizabeth Macias, Fritz Castillo, Cole Anderson
hCoV-19/Iraq/USAFSAM-S071/2020	EPI_ISL_812266	Landstuhl Regional Medical Center	Anthony Fries, Jennifer Meyer, Amanda Javorina, Sarah Purves, William Gruner, Clarise Starr, Elizabeth Macias, Fritz Castillo, Cole Anderson
hCoV-19/Iraq/USAFSAM-S072/2020	EPI_ISL_812267	Landstuhl Regional Medical Center	Anthony Fries, Jennifer Meyer, Amanda Javorina, Sarah Purves, William Gruner, Clarise Starr, Elizabeth Macias, Fritz Castillo, Cole Anderson
hCoV-19/Iraq/USAFSAM-S073/2020	EPI_ISL_812268	Landstuhl Regional Medical Center	Anthony Fries, Jennifer Meyer, Amanda Javorina, Sarah Purves, William Gruner, Clarise Starr, Elizabeth Macias, Fritz Castillo, Cole Anderson
hCoV-19/Iraq/USAFSAM-S074/2020	EPI_ISL_812269	Landstuhl Regional Medical Center	Anthony Fries, Jennifer Meyer, Amanda Javorina, Sarah Purves, William Gruner, Clarise Starr, Elizabeth Macias, Fritz Castillo, Cole Anderson
hCoV-19/Iraq/USAFSAM-S075/2020	EPI_ISL_812270	Landstuhl Regional Medical Center	Anthony Fries, Jennifer Meyer, Amanda Javorina, Sarah Purves, William Gruner, Clarise Starr, Elizabeth Macias, Fritz Castillo, Cole Anderson
hCoV-19/Iraq/USAFSAM-S076/2020	EPI_ISL_812271	Landstuhl Regional Medical Center	Anthony Fries, Jennifer Meyer, Amanda Javorina, Sarah Purves, William Gruner, Clarise Starr, Elizabeth Macias, Fritz Castillo, Cole Anderson
hCoV-19/Iraq/USAFSAM-S077/2020	EPI_ISL_812272	Landstuhl Regional Medical Center	Anthony Fries, Jennifer Meyer, Amanda Javorina, Sarah Purves, William Gruner, Clarise Starr, Elizabeth Macias, Fritz Castillo, Cole Anderson
hCoV-19/Iraq/USAFSAM-S078/2020	EPI_ISL_812273	Landstuhl Regional Medical Center	Anthony Fries, Jennifer Meyer, Amanda Javorina, Sarah Purves, William Gruner, Clarise Starr, Elizabeth Macias, Fritz Castillo, Cole Anderson
hCoV-19/Iraq/USAFSAM-S079/2020	EPI_ISL_812274	Landstuhl Regional Medical Center	Anthony Fries, Jennifer Meyer, Amanda Javorina, Sarah Purves, William Gruner, Clarise Starr, Elizabeth Macias, Fritz Castillo, Cole Anderson
hCoV-19/Iraq/USAFSAM-S080/2020	EPI_ISL_812275	Landstuhl Regional Medical Center	Anthony Fries, Jennifer Meyer, Amanda Javorina, Sarah Purves, William Gruner, Clarise Starr, Elizabeth Macias, Fritz Castillo, Cole Anderson
hCoV-19/Iraq/USAFSAM-S081/2020	EPI_ISL_812276	Landstuhl Regional Medical Center	Anthony Fries, Jennifer Meyer, Amanda Javorina, Sarah Purves, William Gruner, Clarise Starr, Elizabeth Macias, Fritz Castillo, Cole Anderson

hCoV-19/Iraq/USAFSAM-S082/2020	EPI_ISL_812277	Landstuhl Regional Medical Center	Anthony Fries, Jennifer Meyer, Amanda Javorina, Sarah Purves, William Gruner, Clarise Starr, Elizabeth Macias, Fritz Castillo, Cole Anderson
hCoV-19/Iraq/USAFSAM-S083/2020	EPI_ISL_812278	Landstuhl Regional Medical Center	Anthony Fries, Jennifer Meyer, Amanda Javorina, Sarah Purves, William Gruner, Clarise Starr, Elizabeth Macias, Fritz Castillo, Cole Anderson
hCoV-19/Iraq/USAFSAM-S084/2020	EPI_ISL_812279	Landstuhl Regional Medical Center	Anthony Fries, Jennifer Meyer, Amanda Javorina, Sarah Purves, William Gruner, Clarise Starr, Elizabeth Macias, Fritz Castillo, Cole Anderson
hCoV-19/Iraq/USAFSAM-S085/2020	EPI_ISL_812280	Landstuhl Regional Medical Center	Anthony Fries, Jennifer Meyer, Amanda Javorina, Sarah Purves, William Gruner, Clarise Starr, Elizabeth Macias, Fritz Castillo, Cole Anderson
hCoV-19/Iraq/USAFSAM-S086/2020	EPI_ISL_812281	Landstuhl Regional Medical Center	Anthony Fries, Jennifer Meyer, Amanda Javorina, Sarah Purves, William Gruner, Clarise Starr, Elizabeth Macias, Fritz Castillo, Cole Anderson
hCoV-19/Iraq/USAFSAM-S088/2020	EPI_ISL_812282	Landstuhl Regional Medical Center	Anthony Fries, Jennifer Meyer, Amanda Javorina, Sarah Purves, William Gruner, Clarise Starr, Elizabeth Macias, Fritz Castillo, Cole Anderson
hCoV-19/Iraq/USAFSAM-S091/2020	EPI_ISL_812284	Landstuhl Regional Medical Center	Anthony Fries, Jennifer Meyer, Amanda Javorina, Sarah Purves, William Gruner, Clarise Starr, Elizabeth Macias, Fritz Castillo, Cole Anderson
hCoV-19/Iraq/USAFSAM-S092/2020	EPI_ISL_812285	Landstuhl Regional Medical Center	Anthony Fries, Jennifer Meyer, Amanda Javorina, Sarah Purves, William Gruner, Clarise Starr, Elizabeth Macias, Fritz Castillo, Cole Anderson
hCoV-19/Egypt/CHE57357-A-13/2020	EPI_ISL_812793	Genomics Program, Children Cancer Hospital	Hatem A., Hadad A., Abouelnaga S., Amer K., Salah H., Farawyla H., Hafafawy A., Mansour T., Shalaby L., Hassan W., Soliman M., Goma C., Hassan R., Soliman S., Monir G., Hamed M., Hussein S., Abdo J., Jalal D., El-Zayat M., El-Shaqnery H., Diab A., Bakry U., Samir O., Magdelin S., Sayed A.
hCoV-19/Lebanon/LAU-R107/2020	EPI_ISL_8311702	LAUMC-Rizk Hospital	Nancy Fayad, Walid Abi Habib, Rabeh El-Shesheny, Ahmed Kandeil, Youmma Mourad, Jacques Mokhbat, Ghazi Kayali, Jimi Goldstein and Jad Abdallah
hCoV-19/Lebanon/LAU-R126/2020	EPI_ISL_8311703	LAUMC-Rizk Hospital	Nancy Fayad, Walid Abi Habib, Rabeh El-Shesheny, Ahmed Kandeil, Youmma Mourad, Jacques Mokhbat, Ghazi Kayali, Jimi Goldstein and Jad Abdallah
hCoV-19/Lebanon/LAU-R128/2020	EPI_ISL_8311704	LAUMC-Rizk Hospital	Nancy Fayad, Walid Abi Habib, Rabeh El-Shesheny, Ahmed Kandeil, Youmma Mourad, Jacques Mokhbat, Ghazi Kayali, Jimi Goldstein and Jad Abdallah
hCoV-19/Lebanon/LAU-R130/2020	EPI_ISL_8311705	LAUMC-Rizk Hospital	Nancy Fayad, Walid Abi Habib, Rabeh El-Shesheny, Ahmed Kandeil, Youmma Mourad, Jacques Mokhbat, Ghazi Kayali, Jimi Goldstein and Jad Abdallah
hCoV-19/Lebanon/LAU-R135/2020	EPI_ISL_8311706	LAUMC-Rizk Hospital	Nancy Fayad, Walid Abi Habib, Rabeh El-Shesheny, Ahmed Kandeil, Youmma Mourad, Jacques Mokhbat, Ghazi Kayali, Jimi Goldstein and Jad Abdallah
hCoV-19/Lebanon/LAU-R137/2020	EPI_ISL_8311707	LAUMC-Rizk Hospital	Nancy Fayad, Walid Abi Habib, Rabeh El-Shesheny, Ahmed Kandeil, Youmma Mourad, Jacques Mokhbat, Ghazi Kayali, Jimi Goldstein and Jad Abdallah
hCoV-19/Lebanon/LAU-R150/2020	EPI_ISL_8311708	LAUMC-Rizk Hospital	Nancy Fayad, Walid Abi Habib, Rabeh El-Shesheny, Ahmed Kandeil, Youmma Mourad, Jacques Mokhbat, Ghazi Kayali, Jimi Goldstein and Jad Abdallah
hCoV-19/Lebanon/LAU-R158/2020	EPI_ISL_8311709	LAUMC-Rizk Hospital	Nancy Fayad, Walid Abi Habib, Rabeh El-Shesheny, Ahmed Kandeil, Youmma Mourad, Jacques Mokhbat, Ghazi Kayali, Jimi Goldstein and Jad Abdallah
hCoV-19/Lebanon/LAU-R178/2020	EPI_ISL_8311711	LAUMC-Rizk Hospital	Nancy Fayad, Walid Abi Habib, Rabeh El-Shesheny, Ahmed Kandeil, Youmma Mourad, Jacques Mokhbat, Ghazi Kayali, Jimi Goldstein and Jad Abdallah
hCoV-19/Lebanon/LAU-R289/2020	EPI_ISL_8311729	LAUMC-Rizk Hospital	Nancy Fayad, Walid Abi Habib, Rabeh El-Shesheny, Ahmed Kandeil, Youmma Mourad, Jacques Mokhbat, Ghazi Kayali, Jimi Goldstein and Jad Abdallah
hCoV-19/Lebanon/LAU-R293/2020	EPI_ISL_8311730	LAUMC-Rizk Hospital	Nancy Fayad, Walid Abi Habib, Rabeh El-Shesheny, Ahmed Kandeil, Youmma Mourad, Jacques Mokhbat, Ghazi Kayali, Jimi Goldstein and Jad Abdallah
hCoV-19/Lebanon/LAU-R294/2020	EPI_ISL_8311731	LAUMC-Rizk Hospital	Nancy Fayad, Walid Abi Habib, Rabeh El-Shesheny, Ahmed Kandeil, Youmma Mourad, Jacques Mokhbat, Ghazi Kayali, Jimi Goldstein and Jad Abdallah
hCoV-19/Lebanon/LAU-R328/2020	EPI_ISL_8311733	LAUMC-Rizk Hospital	Nancy Fayad, Walid Abi Habib, Rabeh El-Shesheny, Ahmed Kandeil, Youmma Mourad, Jacques Mokhbat, Ghazi Kayali, Jimi Goldstein and Jad Abdallah
hCoV-19/Lebanon/LAU-R330/2020	EPI_ISL_8311734	LAUMC-Rizk Hospital	Nancy Fayad, Walid Abi Habib, Rabeh El-Shesheny, Ahmed Kandeil, Youmma Mourad, Jacques Mokhbat, Ghazi Kayali, Jimi Goldstein and Jad Abdallah
hCoV-19/Lebanon/LAU-R350/2020	EPI_ISL_8311741	LAUMC-Rizk Hospital	Nancy Fayad, Walid Abi Habib, Rabeh El-Shesheny, Ahmed Kandeil, Youmma Mourad, Jacques Mokhbat, Ghazi Kayali, Jimi Goldstein and Jad Abdallah
hCoV-19/Lebanon/LAU-R84/2020	EPI_ISL_8311755	LAUMC-Rizk Hospital	Nancy Fayad, Walid Abi Habib, Rabeh El-Shesheny, Ahmed Kandeil, Youmma Mourad, Jacques Mokhbat, Ghazi Kayali, Jimi Goldstein and Jad Abdallah
hCoV-19/Lebanon/LAU-R89/2020	EPI_ISL_8311756	LAUMC-Rizk Hospital	Nancy Fayad, Walid Abi Habib, Rabeh El-Shesheny, Ahmed Kandeil, Youmma Mourad, Jacques Mokhbat, Ghazi Kayali, Jimi Goldstein and Jad Abdallah
hCoV-19/Lebanon/LAU-R97/2020	EPI_ISL_8311758	LAUMC-Rizk Hospital	Nancy Fayad, Walid Abi Habib, Rabeh El-Shesheny, Ahmed Kandeil, Youmma Mourad, Jacques Mokhbat, Ghazi Kayali, Jimi Goldstein and Jad Abdallah
hCoV-19/Iran/Tehran-09/2020	EPI_ISL_862077	National Influenza Center, Virology Department	J. Yavarian, K. Sadeghi, N.Z. Shafiei Jandaghi, V. Salimi, A. Nejadi, N. Ghavvami, F. Ajaminejad and T. Mokhtari Azad
hCoV-19/Iran/Tehran-08/2020	EPI_ISL_862078	National Influenza Center, Virology Department	A. Nejadi, J. Yavarian, K. Sadeghi, N.Z. Shafiei Jandaghi, V. Salimi, N. Ghavvami, F. Ajaminejad and T. Mokhtari Azad
hCoV-19/Kuwait/SKS00113-JAH/2020	EPI_ISL_903388	MOH - Jaber Al-Ahmad Hospital (Innovation Research Laboratory)	Salman Al-Sabah, Mohammad Alghounaim
hCoV-19/Kuwait/SKS00103-JAH/2020	EPI_ISL_903389	MOH - Jaber Al-Ahmad Hospital (Innovation Research Laboratory)	Salman Al-Sabah, Mohammad Alghounaim
hCoV-19/Iraq/BAS-2/2020	EPI_ISL_907075	Department of Biology, University of Basrah	Abu-Ali, H.M. and Al-Badran, J.F.
hCoV-19/Iraq/BAS-1/2020	EPI_ISL_956332	Department of Biology, University of Basrah	Abu-Ali, H.F. and Al-Badran, A.I.