

SUPPLEMENTARY MATERIAL

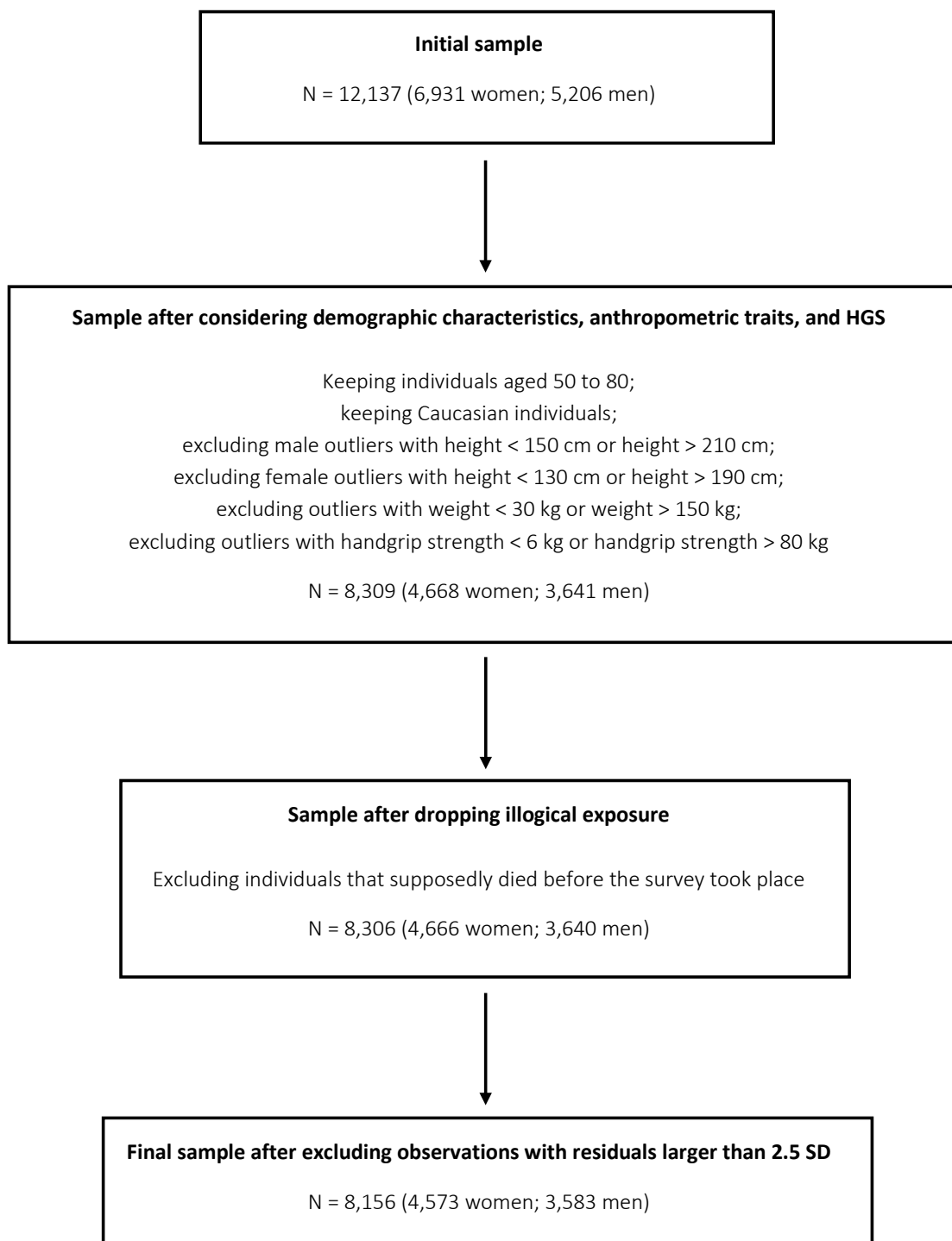


Figure A1: Sample construction

	Model 1 (without education)	Model 2 (with education)
Men		
Reference: [0.0 SD, 0.5 SD)	1.00 (reference)	1.00 (reference)
Strong: [0.5 SD, 3.0 SD)	0.93 (0.69-1.25)	0.93 (0.69-1.26)
Weak 1: [-0.5 SD, 0.0 SD)	1.67 (1.23-2.26)	1.68 (1.24-2.27)
Weak 2: [-1.0 SD, -0.5 SD)	2.02 (1.49-2.75)	1.98 (1.46-2.69)
Weak 3: [-2.0 SD, -1.0 SD)	2.40 (1.77-3.26)	2.39 (1.76-3.25)
Weak 4: [-3.0 SD, -2.0 SD)	2.34 (1.40-3.93)	2.32 (1.39-3.89)
Age in years	1.09 (1.07-1.10)	1.09 (1.07-1.10)
Years of education		0.96 (0.93-0.98)
Max log likelihood	-2358.9	-2353.0
LR test statistic	244.6	256.4
Total time at risk	21864	21864
Events	529	529
Women		
Reference: [0.0 SD, 0.5 SD)	1.00 (reference)	1.00 (reference)
Strong: [0.5 SD, 3.0 SD)	0.90 (0.66-1.22)	0.89 (0.66-1.22)
Weak 1: [-0.5 SD, 0.0 SD)	1.32 (0.96-1.82)	1.30 (0.94-1.79)
Weak 2: [-1.0 SD, -0.5 SD)	1.65 (1.20-2.28)	1.62 (1.18-2.24)
Weak 3: [-2.0 SD, -1.0 SD)	1.85 (1.34-2.55)	1.83 (1.32-2.53)
Weak 4: [-3.0 SD, -2.0 SD)	3.03 (1.83-5.04)	2.98 (1.79-4.96)
Age in years	1.10 (1.08-1.12)	1.10 (1.08-1.11)
Years of education		0.93 (0.90-0.96)
Max log likelihood	-2192.8	-2181.7
LR test statistic	212.6	234.8
Total time at risk	28500	28500
Events	449	449

95% CI in parentheses, years of education < 20 years

Table A1: Hazard ratios for mortality by gender and st_HGS group, with and without years of education as control

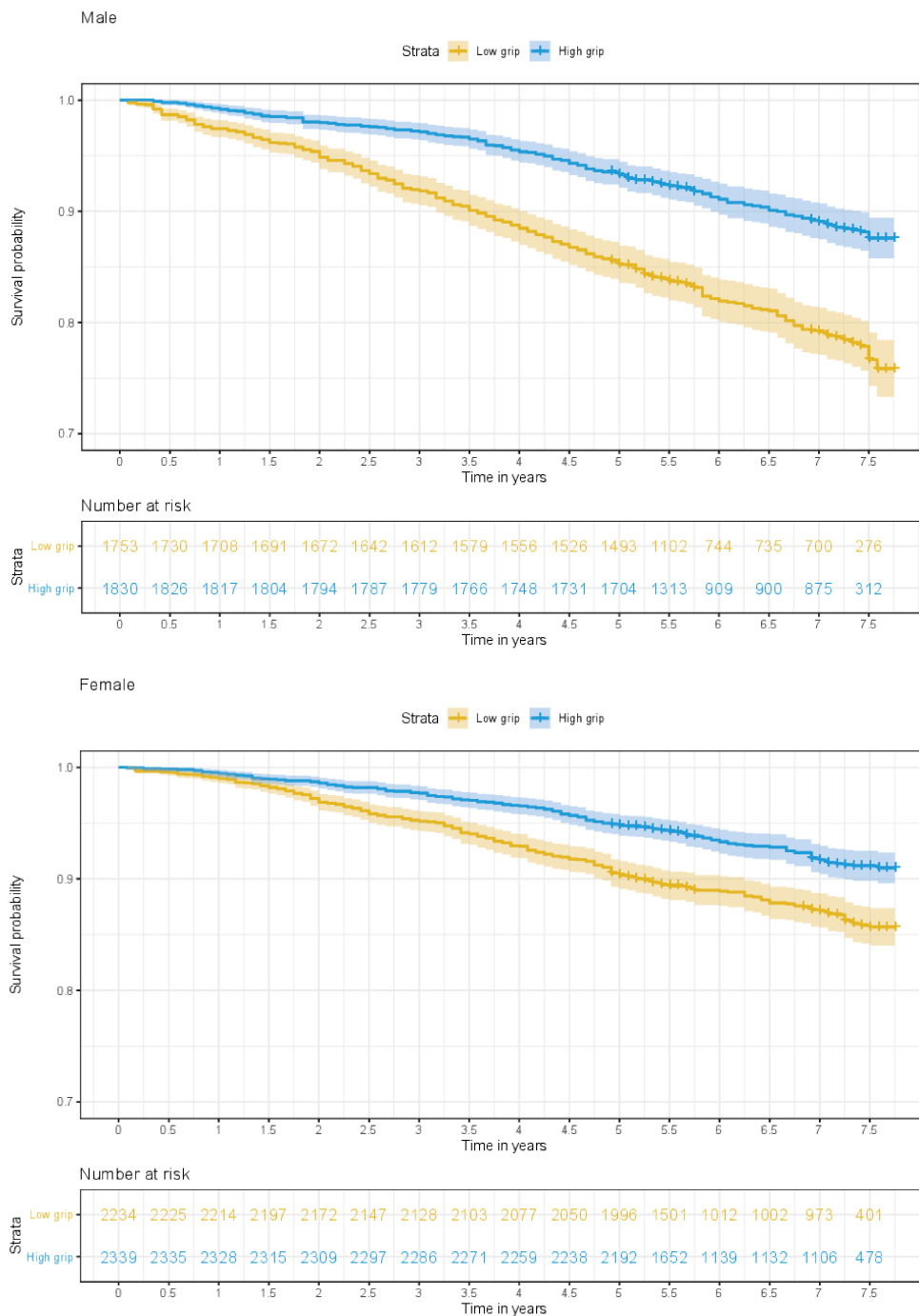


Figure A2: Survival and numbers at risk, by gender and standardised handgrip strength

“High grip” refers to the strong and reference group and “low grip” to groups Weak1-4