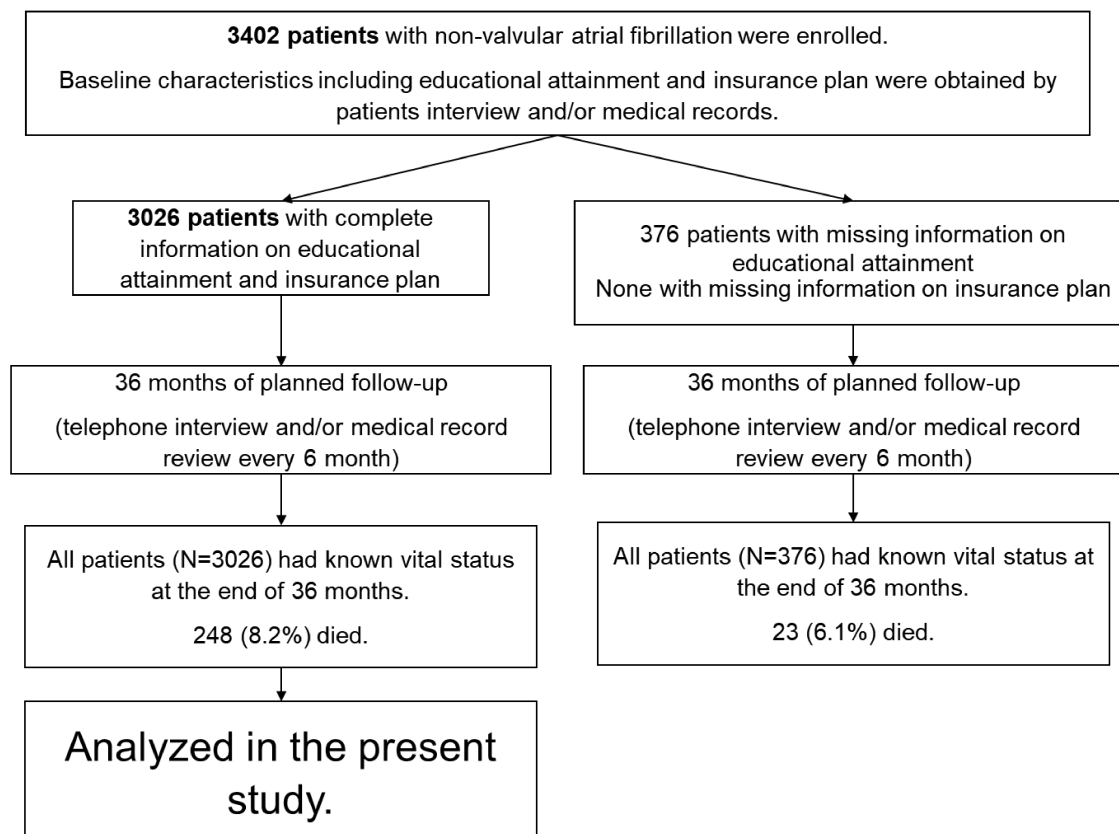


## Appendix Figure 1. Study profile



**Appendix Table 1.** Tests for proportional hazard assumption of time to events of interest based on weighted Schoenfeld residuals

Variables	<i>P</i> * value for Events of Interest		
	All-cause Mortality	Ischemic Stroke	Major Bleeding
<b>Educational Attainment</b>			
- No formal education	0.013	<0.001	0.001
- Elementary	0.035	0.005	0.007
- Secondary	0.193	0.110	0.147
- Higher education (reference)	.	.	.
- Global Test	0.052	0.003	0.005
<b>Insurance Plan</b>			
- UHC	0.011	0.004	0.003
- SSS	0.296	0.442	0.326
- NGS	0.381	0.434	0.394
- CSMBS (reference)	.	.	.
- Global Test	0.029	0.015	0.012

\*A significant *P* value indicates that proportional hazard assumption is violated.

Abbreviations: CSMBS, civil servant medical benefit scheme; NGS, non-government-based scheme; SSS, social-security scheme; UCS, universal coverage scheme.

**Appendix Table 2.** Characters and events rate of patients with missing information (N=376) compared to those who remained in the study (N=3026).

	<b>Patients with missing information (N=376)</b>	<b>All patients remained in the study (N=3026)</b>	<b>P</b>
Age, mean (SD), y	68.0 (11.2)	67.3 (11.3)	0.235
Male, No. (%)	201 (53.5%)	1779 (58.8%)	0.048
CHA <sub>2</sub> DS <sub>2</sub> -VAS <sub>c</sub> , mean (SD)	3.1 (1.6)	3.0 (1.7)	0.162
HASBLED, mean (SD)	1.5 (1.0)	1.5 (1.0)	0.337
Event rate, No. (%)			
- Death	23 (6.1%)	248 (8.2%)	0.160
- Ischemic stroke	8 (2.1%)	95 (3.1%)	0.280
- Major bleeding	16 (4.3%)	136 (4.5%)	0.832

Abbreviations: CHA<sub>2</sub>DS<sub>2</sub>-VAS<sub>c</sub>, congestive heart failure, hypertension, age ≥ 75 years, diabetes mellitus, stroke or transient ischemic attack (TIA), vascular disease, age 65 to 74 years, sex category; HASBLED, hypertension, abnormal renal/liver function, stroke, bleeding history or predisposition, labile INR, elderly (>65 years), drugs/alcohol concomitantly.

**Appendix Table 3.** Baseline Characteristics by Educational Attainment  
(N=3026)

Characters	No Formal Education (N=213)	Elementary (N=1526)	Secondary (N=639)	Higher Education (N=648)	P
Age, mean (SD), y	74.4(10.0)	69.3 (10.2)	64.3 (12.1)	63.3 (11.1)	<.001
Male, No. (%)	61 (28.6%)	770 (50.5%)	476 (74.5%)	472 (72.8%)	<.001
CHA <sub>2</sub> DS <sub>2</sub> -VASc, mean (SD)	3.9(1.5)	3.3(1.6)	2.7(1.7)	2.6(1.7)	<.001
HASBLED, mean (SD)	1.7 (0.9)	1.6 (1.0)	1.5 (1.0)	1.4(1.0)	<.001
CAD, No. (%)	23 (10.8%)	248 (16.3%)	99 (15.5%)	108 (16.7%)	0.199
CHF, No. (%)	63 (29.6%)	451 (29.6%)	177 (27.7%)	138 (21.3%)	.001
Hypertension, No. (%)	157 (73.7%)	1061 (69.5%)	435 (68.1%)	408 (63.0%)	.006
Dyslipidemia, No. (%)	92 (43.2%)	831 (54.5%)	387 (60.6%)	393 (60.6%)	<.001
Diabetes, No. (%)	39 (18.3%)	363 (23.8%)	162 (25.4%)	166 (25.6%)	0.148
Stroke/TIA, No. (%)	42 (19.7%)	261 (17.1%)	104 (16.3%)	123 (19.0%)	0.468
Vascular Disease, No. (%)	26 (12.2%)	263 (17.2%)	105 (16.4%)	116 (17.9%)	0.258
Current Smoker, No. (%)	3 (1.4%)	52 (3.4%)	32 (5.0%)	11 (1.7%)	.003

Alcohol Use, No. (%)	1 (0.5%)	57 (3.7%)	44 (6.9%)	27 (4.2%)	<.001
History of Bleeding, No. (%)	20 (9.4%)	156 (10.2%)	64 (10.0%)	64 (9.9%)	0.981
Abnormal Renal Function, No. (%)	5 (2.3%)	44 (2.9%)	23 (3.6%)	18 (2.8%)	0.733
Abnormal Liver Function, No. (%)	4 (1.9%)	35 (2.3%)	19 (3.0%)	9 (1.4%)	0.273
Antiplatelets, No. (%)	42 (19.7%)	420 (27.5%)	163 (25.5%)	177 (27.3%)	0.094
<b>Anticoagulants</b>					<b>&lt;.001</b>
- VKA, No. (%)	179 (84.0%)	1081 (70.8%)	427 (66.8%)	388 (59.9%)	
- DOAC, No. (%)	3 (1.4%)	48 (3.1%)	50 (7.8%)	81 (12.5%)	
- None, No. (%)	31 (14.6%)	397 (26.0%)	162 (25.4%)	179 (27.6%)	

Abbreviations: CAD, coronary artery disease; CHA<sub>2</sub>DS<sub>2</sub>-VAS<sub>c</sub>, congestive heart failure, hypertension, age ≥ 75 years, diabetes mellitus, stroke or transient ischemic attack (TIA), vascular disease, age 65 to 74 years, sex category; CHF, congestive heart failure; DOAC, direct oral anticoagulant; HASBLED, hypertension, abnormal renal/liver function, stroke, bleeding history or predisposition, labile INR, elderly (>65 years), drugs/alcohol concomitantly; VKA, vitamin K antagonist.

**Appendix Table 4.** Incidence and Restricted Mean Survival Time of Clinical Outcomes by Educational Attainment

		<b>No Formal Education</b> (N=213)	<b>Elementary</b> (N=1526)	<b>Secondary</b> (N=639)	<b>Higher Education</b> (N=648)	<b>P</b>
<b>All-cause Mortality</b> (N=248)	<b>Incidence, No. (%)</b>	30 (14.1%)	146 (9.6%)	45 (7.0%)	27 (4.2%)	<.001
	<b>RMST, months (95% CI)</b>	31.98 (30.62-33.33)	33.70 (33.32-34.80)	34.29 (33.78-34.80)	35.02 (34.65-35.40)	<.001
<b>Ischemic Stroke</b> (N=95)	<b>Incidence, No. (%)</b>	14 (6.6%)	55 (3.6%)	14 (2.2%)	12 (1.9%)	.002
	<b>RMST, months (95% CI)</b>	34.15 (33.21-35.10)	35.11 (34.87-35.36)	35.46 (35.16-35.75)	35.58 (35.32-35.84)	.004
<b>Major Bleeding</b> (N=136)	<b>Incidence, No. (%)</b>	13 (6.1%)	70 (4.6%)	35 (5.5%)	18 (2.8%)	0.066
	<b>RMST, months (95% CI)</b>	34.18 (33.22-35.14)	34.82 (34.54-35.11)	34.72 (34.27-35.17)	35.31 (34.98-35.64)	.03

Abbreviations: RMST, restricted mean survival time.

**Appendix Table 5.** Incidence and Restricted Mean Survival Time of Clinical Outcomes by Insurance Plan

		UHC (N=1333)	SSS (N=142)	CSMBS (N=1397)	NGS (N=154)	P
<b>All-cause Mortality (N=248)</b>	<b>Incidence, No. (%)</b>	122 (9.2%)	10 (7.0%)	100 (7.2%)	16 (10.4%)	0.183
	<b>RMST, months (95% CI)</b>	33.61 (33.19-34.03)	34.52 (33.55-35.50)	34.32 (33.98-34.66)	33.95 (32.91-34.99)	.06
<b>Ischemic Stroke (N=95)</b>	<b>Incidence, No. (%)</b>	36 (2.7%)	3 (2.1%)	51 (3.7%)	5 (3.2%)	0.468
	<b>RMST, months (95% CI)</b>	35.27 (35.03-35.51)	35.64 (35.21-36.07)	35.17 (34.92-35.41)	35.14 (34.38-35.90)	.31
<b>Major Bleeding (N=136)</b>	<b>Incidence, No. (%)</b>	65 (4.9%)	3 (2.1%)	60 (4.3%)	8 (5.2%)	0.451
	<b>RMST, months (95% CI)</b>	34.75 (34.43-35.07)	35.61 (35.07-36.15)	34.91 (34.62-35.19)	34.86 (34.02-35.69)	.06

Abbreviations: CSMBS, civil servant medical benefit scheme; NGS, non-government-based scheme; RMST, restricted mean survival time; SSS, social-security scheme; UCS, universal coverage scheme.

**Appendix Table 6.** Adjusted\* restricted median survival time (RMST) to ischemic stroke among alive patients by educational attainment and insurance plan.

	RMST (months)	95% CI	P
<b>Insurance Plan (vs. CSMBS)</b>			
- UHC	0.18	-0.16 to 0.52	0.290
- SSS	0.02	-0.48 to 0.51	0.946
- NGS	-0.12	-0.85 to 0.60	0.737
<b>Educational Attainment (vs. higher education)</b>			
- No formal education	-0.57	-1.26 to 0.11	0.103
- Elementary	-0.45	-0.79 to -0.10	0.011
- Secondary	-0.26	-0.57 to 0.05	0.105

\*The model was adjusted for of age, sex, educational attainment, insurance plan, types of anticoagulant, CHA<sub>2</sub>DS<sub>2</sub>VAS<sub>c</sub>, and HASBLED scores.

Abbreviations: CHA<sub>2</sub>DS<sub>2</sub>-VAS<sub>c</sub>, congestive heart failure, hypertension, age ≥ 75 years, diabetes mellitus, stroke or transient ischemic attack (TIA), vascular disease, age 65 to 74 years, sex category; CSMBS, civil servant medical benefit scheme; HASBLED, hypertension, abnormal renal/liver function, stroke, bleeding history or predisposition, labile INR, elderly (>65 years), drugs/alcohol concomitantly; NGS, non-government-based scheme; RMST, restricted median survival time; SSS, social-security scheme; UCS, universal coverage scheme.



**Appendix Table 7.** Adjusted\* restricted median survival time (RMST) to major bleeding among alive patients by educational attainment and insurance plan.

	RMST (months)	95% CI	P
<b>Insurance Plan (vs. CSMBS)</b>			
- UHC	-0.09	-0.47 to 0.29	0.651
- SSS	0.04	-0.59 to 0.65	0.912
- NGS	-0.06	-0.76 to 0.62	0.851
<b>Educational Attainment (vs. higher education)</b>			
- No formal education	-0.46	-1.35 to 0.43	0.315
- Elementary	-0.08	-0.54 to 0.37	0.720
- Secondary	-0.14	-0.60 to 0.33	0.567

\*The model was adjusted for of age, sex, educational attainment, insurance plan, types of anticoagulant, CHA<sub>2</sub>DS<sub>2</sub>VAS<sub>c</sub>, and HASBLED scores.

Abbreviations: CHA<sub>2</sub>DS<sub>2</sub>-VAS<sub>c</sub>, congestive heart failure, hypertension, age ≥ 75 years, diabetes mellitus, stroke or transient ischemic attack (TIA), vascular disease, age 65 to 74 years, sex category; CSMBS, civil servant medical benefit scheme; HASBLED, hypertension, abnormal renal/liver function, stroke, bleeding history or predisposition, labile INR, elderly (>65 years), drugs/alcohol concomitantly; NGS, non-government-based scheme; RMST, restricted median survival time; SSS, social-security scheme; UCS, universal coverage scheme.